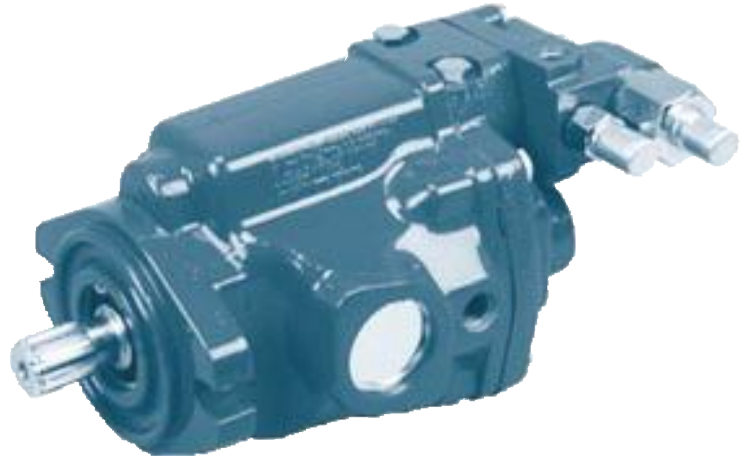
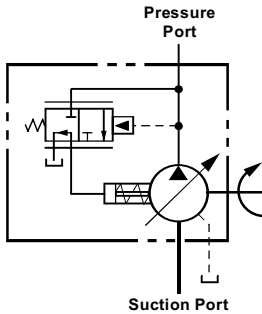
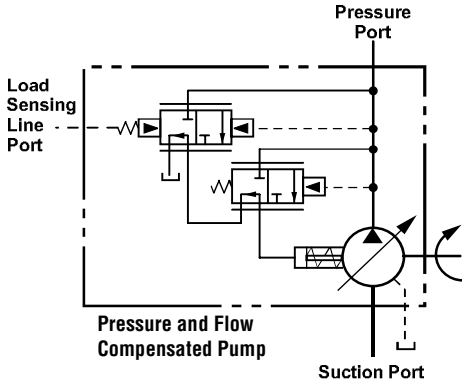


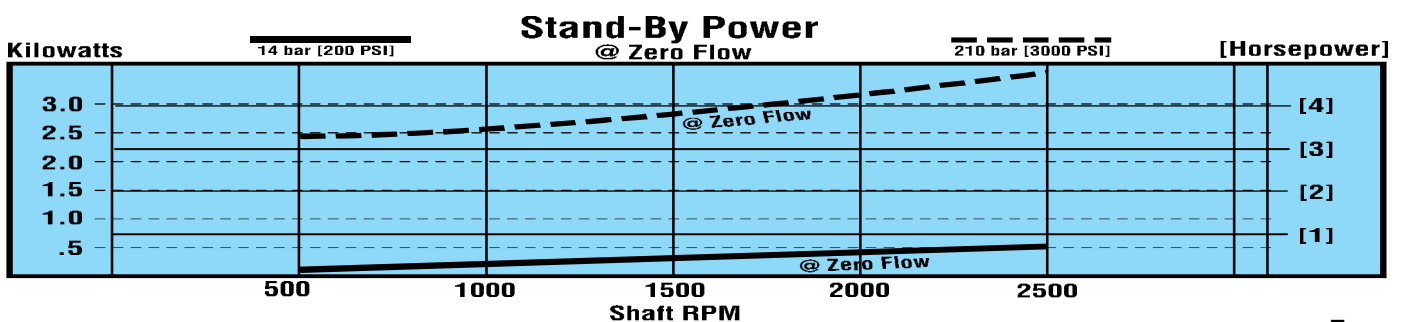
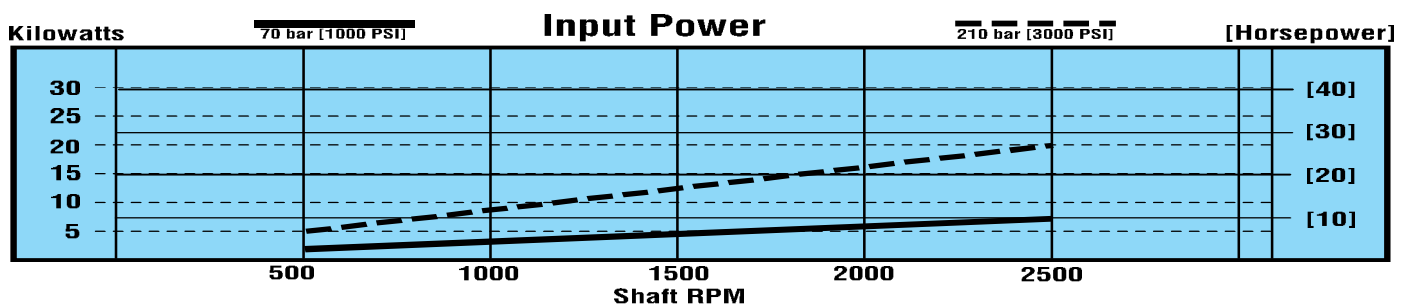
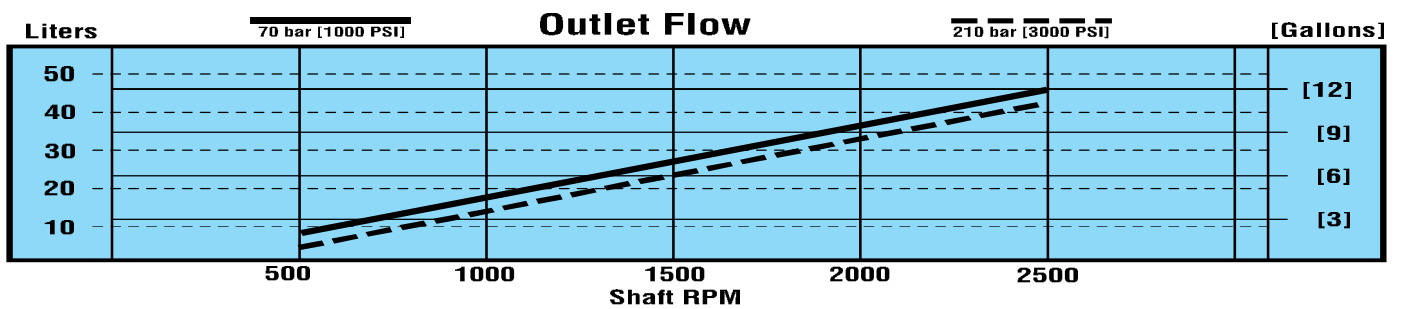
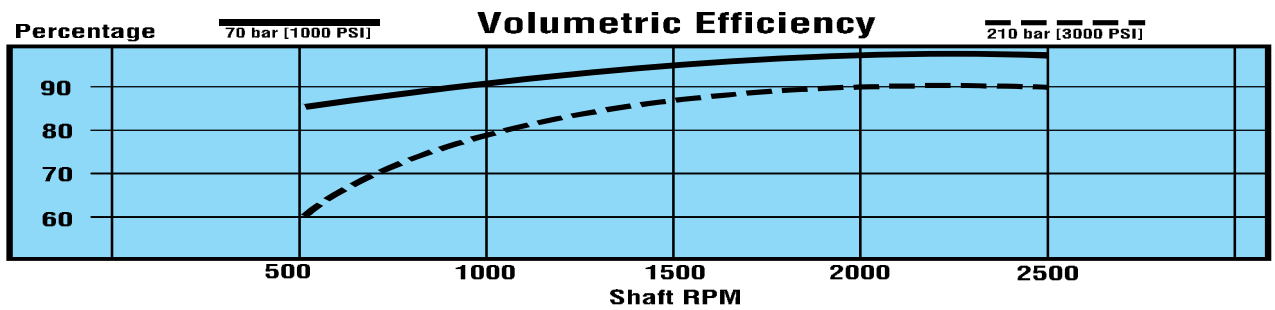
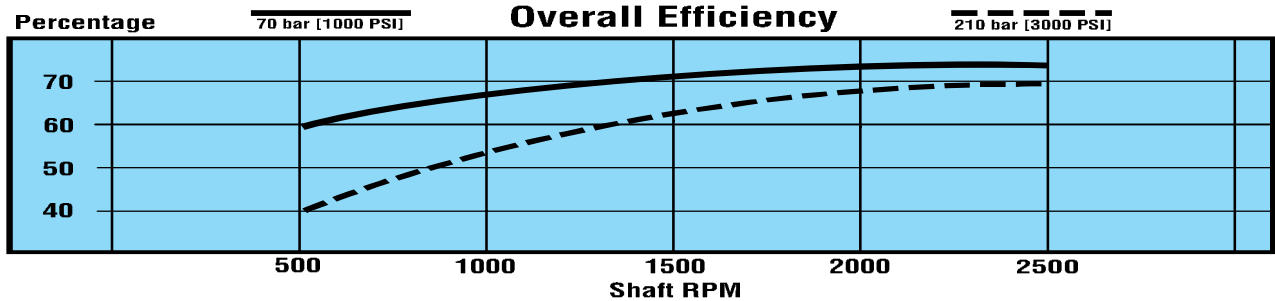
# Model 70122, 19 cm<sup>3</sup>/r [1.16 in<sup>3</sup>/r]



Specification	Model 70122	
	Metric Units	U.S. Units
Mounting Flange	2 Bolt SAE "A" Mount	
Maximum Displacement / Rev	0 to 19 cm <sup>3</sup> /r	0 to 1.16 in <sup>3</sup> /r
Flow @Rated Speed and PSI	41,6 l/min.	11.0 GPM
Maximum Rated Speed	2500 RPM	2500 RPM
Continuous Rated Pressure	210 bar	3000 PSI
Maximum Intermittent Pressure	275 bar	4000 PSI
Continuous Allowable Case Pressure	2 bar	25 PSI
Maximum High Pressure Setting @ Zero Flow	Std 210 bar	Std. 3000 PSI
Low Pressure Setting @ Zero Flow	Std. 14 bar	Std. 200 PSI
Compensator Response @ Rated PSI and RPM	15 mil. sec.	15 mil. sec.
Compensator Recovery @ Rated PSI and RPM	65 mil. sec.	65 mil. sec.
Maximum Continuous Inlet Vacuum	0,87 bar absolute	4 in. Hg.
Max. Thrust Load Into Pump and Shaft Side Load, for Input Shaft.	Consult an Eaton representative and/or Eaton engineering.	
Maximum Continuous Inlet Temperature	107°C	225° F
Minimum Operating Temperature	-29° C	-20° F
Weight per single pump	8 kg	18 lbs.

# Model 70122 Performance Data

The charts below are representative of a 19 cm<sup>3</sup>/r [1.16 in<sup>3</sup>/r] Pressure-Flow Compensated Piston Pump. The tests were run at an oil temperature of 82°C [180°F] with viscosity 7 - 9 cSt [50 - 54 SUS] and the pump at maximum displacement.



# Model 70122 Code

The Model 70122 Pressure or Pressure-Flow Compensated Piston Pumps are specified by the following model code. Once a pump is built from the model code, a product number will be assigned to that arrangement.

In using the model code make sure all positions are selected within the 21 digit code for each pump.

**Code Example:**

<b>AA</b>	<b>Y</b>	<b>R</b>	<b>A</b>	<b>B</b>	<b>0</b>	<b>1</b>	<b>0</b>	<b>1</b>	<b>0</b>	<b>A</b>	<b>A</b>	<b>0</b>	<b>0</b>	<b>0</b>	<b>0</b>	<b>0</b>	<b>0</b>	<b>A</b>	<b>0</b>	<b>0</b>	
Position -	1, 2, 3,	4,	5,	6,	7,	8,	9,	10,	11,	12,	13,	14,	15,	16,	17,	18,	19,	20,	21		
					0	1			0			0	0	0	0	0	0	A	0	0	

**Position 1, 2, 3 - Code Title**

**AA** = Model 70122, 19 cm<sup>3</sup>/r [1.16 in<sup>3</sup>/r]  
 Pressure or Pressure-Flow Compensated Piston Pump

*All left (CCW) or right (CW) directions given are viewed from the input shaft end of the pump.*

**Position 4 - Input Shaft Rotation**

**R** = Righthand Rotation (CW)  
**L** = Lefthand Rotation (CCW)

**Position 5, 6 - Input Shaft**

**AB** = Straight Shaft Dia. 22,2 [.875], Keyway 6,3 [.25] x 25 [1.0], Shaft Extension 41,1 [1.62] (Key Included)  
**AD** = 13 Tooth 16/32 Spline, Shaft Extension 41,1 [1.62]  
**AF** = Straight Shaft Dia. 19,05 [.75], Keyway 4,73 [.186] x 26,2 [1.03], Shaft Extension 44,4 [1.75] (Key Included)  
**AC** = 13 Tooth 16/32 Spline, Shaft Extension 41,1 [1.62] with snap ring groove

Code	AA
<b>AB</b>	Std.
<b>AD</b>	Std.
<b>AF</b>	Opt.
<b>AC</b>	Opt.

**Position 7, 8 - Pressure Compensator Setting**

**01** = 210-215 bar [3000-3100 PSI] Note: Consult an Eaton representative for additional settings from 35 bar [500 PSI] min.

<b>01</b>	Std.
-----------	------

**Position 9, 10 - Flow Compensator Setting**

**00** = No Flow Compensator Note: Consult an Eaton representative for additional settings to a max. of 31 bar [450 PSI]  
**01** = 13,1-14,5 bar [190-210 PSI]

<b>00</b>	Std.
<b>01</b>	Std.

**Position 11 - Compensator Special Features**

**0** = No Special Feature  
**A** = Bleed Off

<b>0</b>	Std.
<b>A</b>	Opt.

**Position 12 - Main Ports, Size and Location**

**A** = 1.1875 -12 UN Suction Port; 1.0625-12 UN Pressure Port; - SAE Straight Thread O-ring Ports - Rear  
**C** = 1.1875 -12 UN Suction Port; 1.0625-12 UN Pressure Port; - SAE Straight Thread O-ring Ports - Opposite Sides

<b>A</b>	Std.
<b>C</b>	Std.

**Position 13 - Drain Port, Size and Location**

**A** = .5625-18 UNF - SAE Straight Thread O-ring Port - Right Side of Housing

<b>A</b>	Std.
----------	------

**Position 14 - Auxiliary Rear Mounting**

**0** = No Auxiliary Mounting

<b>0</b>	Std.
----------	------

**Position 15 - Maximum Displacement Option**

**0** = As Given in Code Title

<b>0</b>	Std.
----------	------

**Position 16, 17 - Special Features**

**00** = No Special Features

<b>00</b>	Std.
-----------	------

**Position 18, 19 - Paint**

**0A** = Primer

<b>0A</b>	Std.
-----------	------

**Position 20 - Identification**

**0** = Standard

<b>0</b>	Std.
----------	------

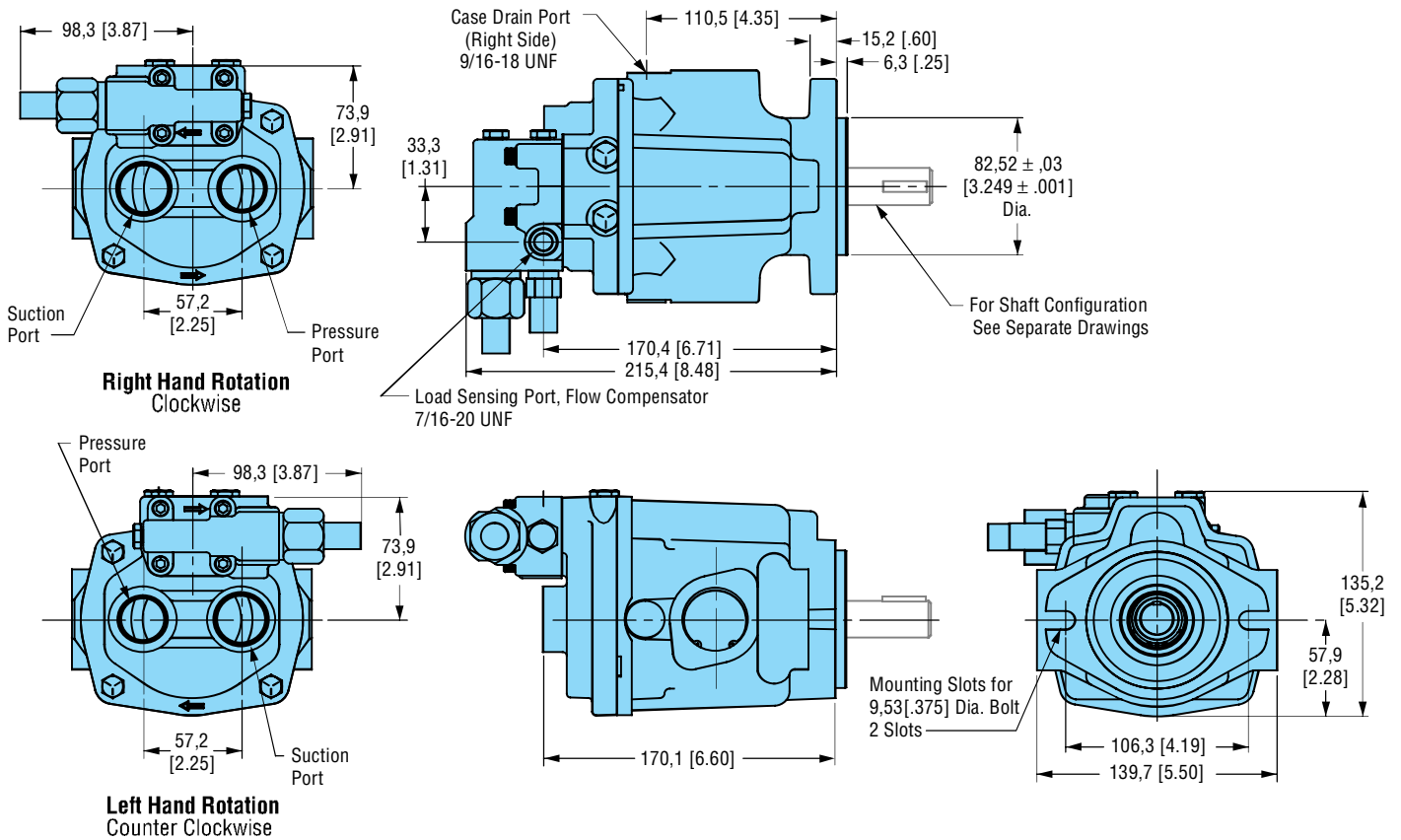
**Position 21 - Design Code**

**0** = Eaton assigned design code

<b>0</b>	Std.
----------	------

# Model 70122 Installation Drawings

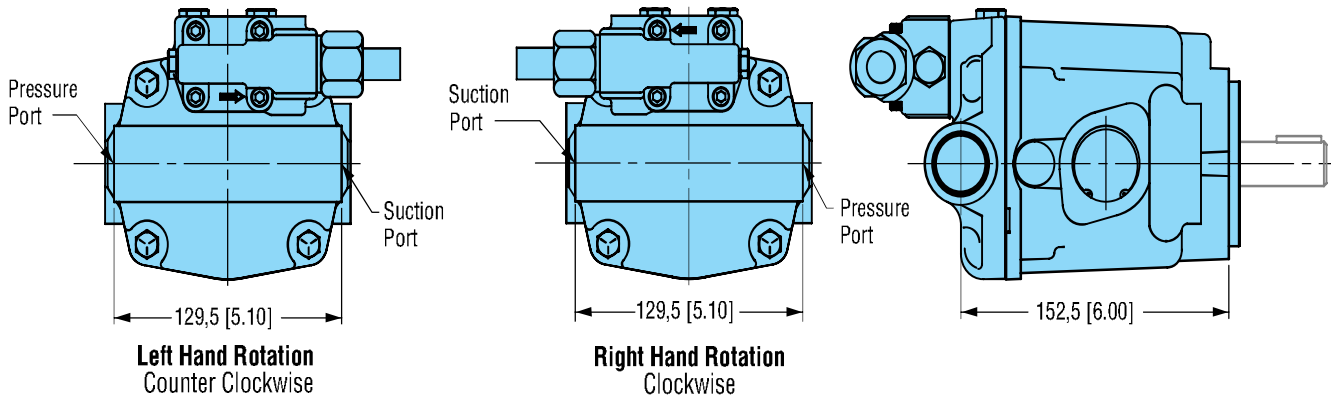
## Rear Porting



Dimensions are in millimeters [inches], unless otherwise specified.

# Model 70122 Installation Drawings

## Opposite Side Porting



## Input Shafts

