

## FEATURES AND OPTIONS

Feature	Unit	Frame						
		042	055	075	100	130	180	250
Displacement	cm <sup>3</sup> /rev [in <sup>3</sup> ]/rev	42 [2.56]	55 [3.35]	75 [4.59]	100 [6.10]	130 [7.93]	180 [10.98]	250 [15.25]
Flow at rated speed (theoretical)	l/min [US gal/min]	176 [46]	215 [57]	270 [71]	330 [87]	403 [106]	468 [124]	575 [160]
Torque at maximum displacement (theoretical)	N•m/bar [lbf•in/1000 psi]	0.67 [410]	0.88 [530]	1.19 [730]	1.59 [970]	2.07 [1260]	2.87 [1750]	3.97 [2433]
Mass moment of inertia of rotating components	kg•m <sup>2</sup> [slug•ft <sup>2</sup> ]	0.0023 [0.0017]	0.0060 [0.0044]	0.0096 [0.0071]	0.0150 [0.0111]	0.0023 [0.0170]	0.0380 [0.0280]	0.0650 [0.0479]
Weight (with control opt.MA)	kg [lb]	34 [75]	40 [88]	49 [108]	68 [150]	88 [195]	136 [300]	154 [340]
Mounting (per SAE J744)		B	C	C	C	D	E	E
Rotation		Clockwise or Counterclockwise						
Main ports: 4-bolt split-flange (per SAE J518 code 62)	mm [in]	19.05 [0.75]	25.4 [1.0]	25.4 [1.0]	25.4 [1.0]	31.75 [1.25]	31.75 [1.25]	38.1 [1.5]
Main port configuration		Radial	Radial or axial			Radial		
Case drain ports (SAE O-ring boss)	UNF thread (in.)	0.875–14	1.0625–12	1.0625–12	1.0625–12	1.625–12	1.625–12	1.625–12
Other ports		SAE O-ring boss. See <i>Installation drawings</i> , page 34.						
Shafts		Splined, straight keyed, and tapered shafts available. See <i>Shafts</i> , page 15.						
Auxiliary mounting		SAE-A, B, C				SAE-A, B, C, D	SAE-A, B, C, D, E	
Installation position		Installation is recommended with control on the top or side. Consult your Sauer-Danfoss representative for nonconformance guidelines. The housing must remain filled with hydraulic fluid.						

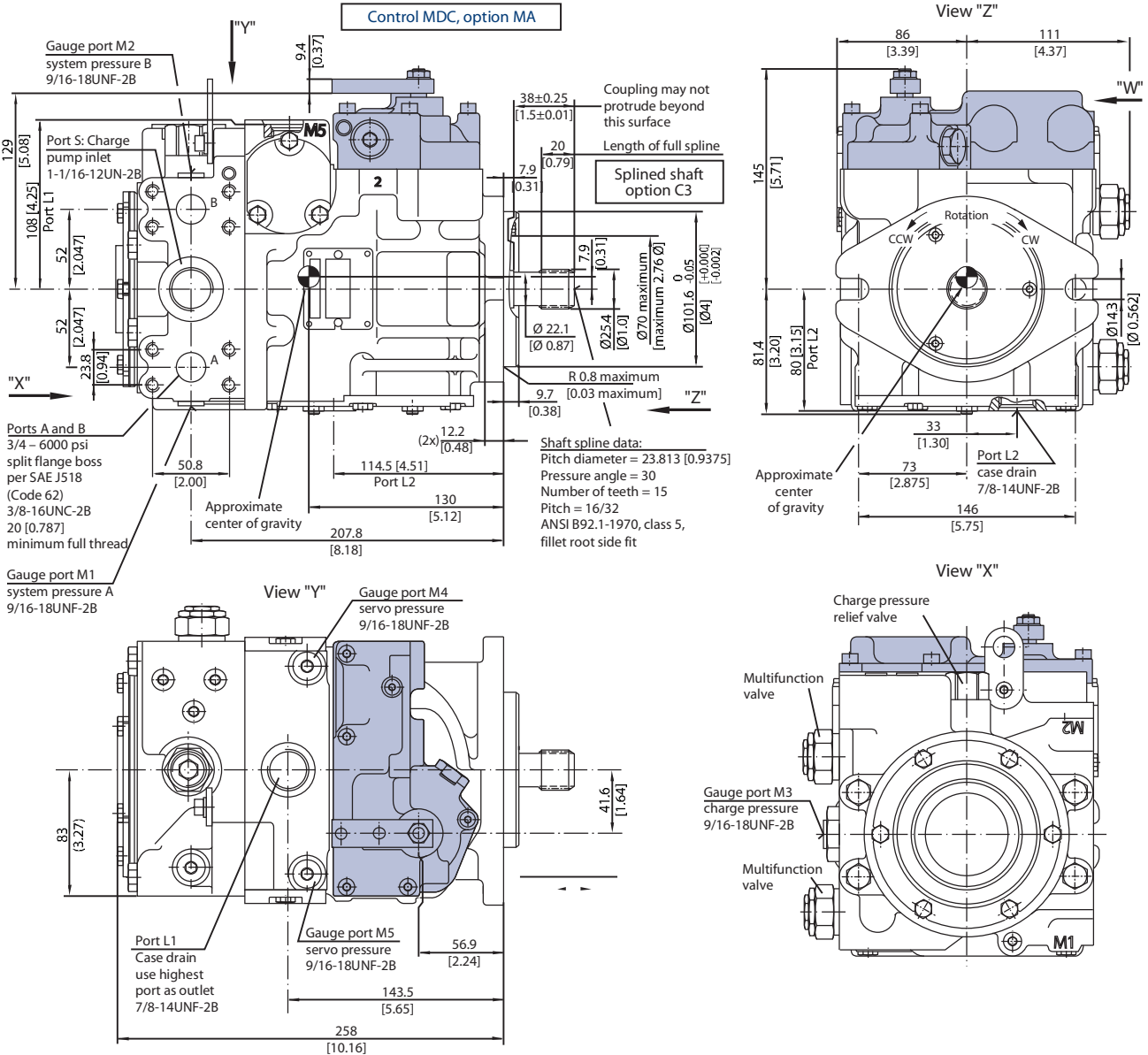
## OPERATING PARAMETERS

Parameter	Unit	Frame						
		042	055	075	100	130	180	250
<b>Input speed</b>								
Minimum	min <sup>-1</sup> (rpm)	500	500	500	500	500	500	500
Continuous		4200	3900	3600	3300	3100	2600	2300
Maximum		4600	4250	3950	3650	3400	2850	2500
<b>System pressure</b>								
Rated	bar [psi]	420 [6000]						
Maximum		450 [6500]						
Minimum low loop		10 [150]						
<b>Inlet pressure (charge inlet)</b>								
Minimum (continuous)	bar (abs.)	0.7 [9]						
Minimum (cold start)	[in. Hg vac.]	0.2 [24]						
<b>Case pressure</b>								
Continuous	bar [psi]	3 [40]						
Maximum (cold start)		5 [75]						

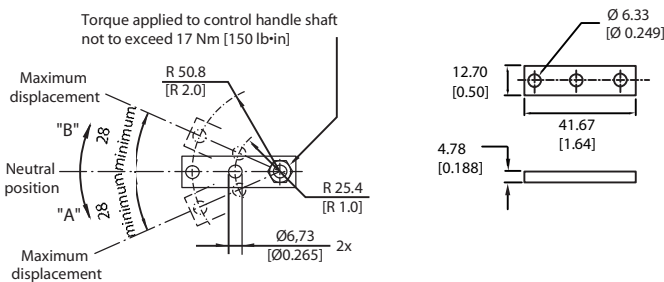
mm [in]

**FRAME SIZE 042**

*Manual displacement control (MDC), endcap twin ports, option 80*



Manual displacement control handle dimensions



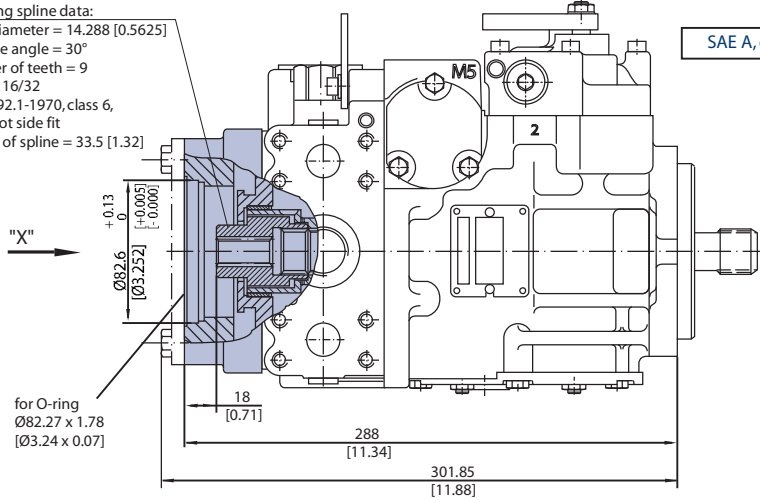
P102 040

**FRAME SIZE 042  
(continued)**

*Auxiliary mounting pad – options AB, BC, BB*

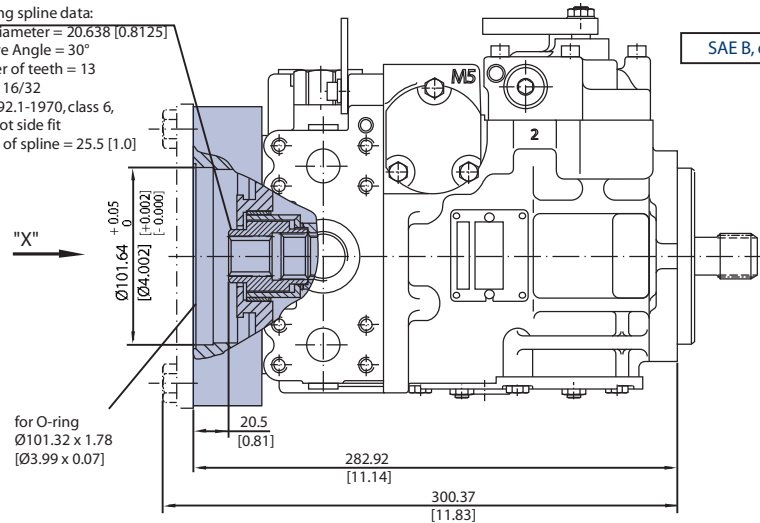
Coupling spline data:

Pitch diameter = 14.288 [0.5625]  
Pressure angle = 30°  
Number of teeth = 9  
Pitch = 16/32  
ANSI B92.1-1970, class 6,  
fillet root side fit  
Length of spline = 33.5 [1.32]



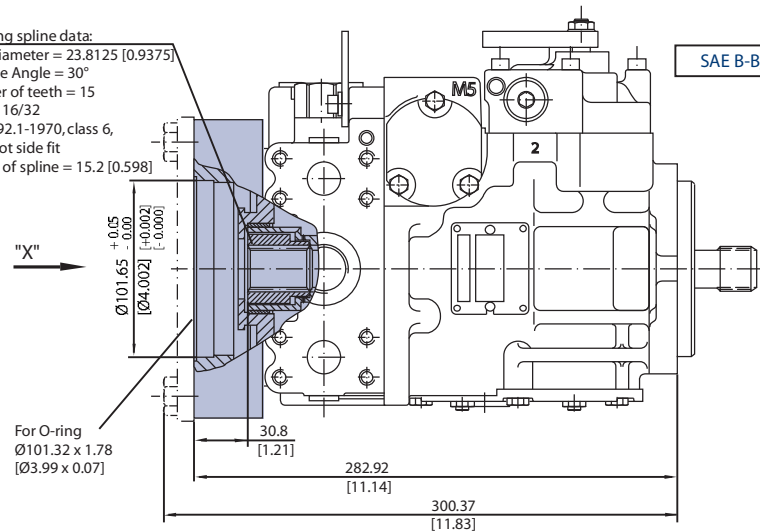
Coupling spline data:

Pitch diameter = 20.638 [0.8125]  
Pressure Angle = 30°  
Number of teeth = 13  
Pitch = 16/32  
ANSI B92.1-1970, class 6,  
fillet root side fit  
Length of spline = 25.5 [1.0]



Coupling spline data:

Pitch diameter = 23.8125 [0.9375]  
Pressure Angle = 30°  
Number of teeth = 15  
Pitch = 16/32  
ANSI B92.1-1970, class 6,  
fillet root side fit  
Length of spline = 15.2 [0.598]

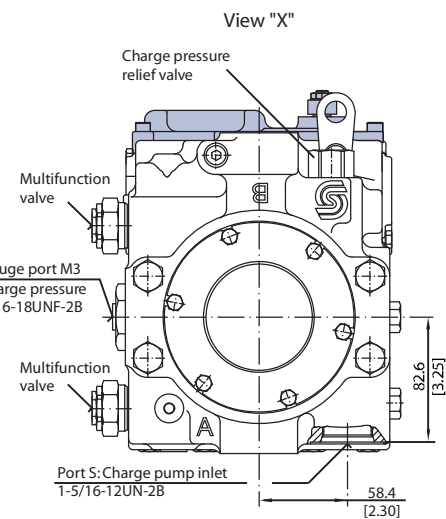
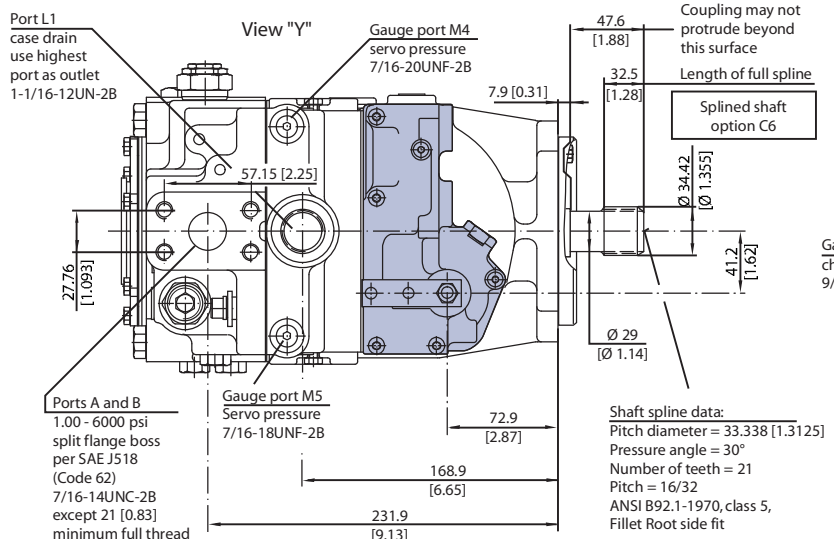
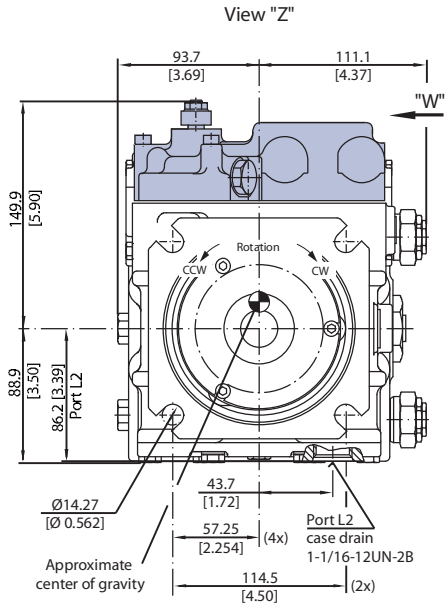
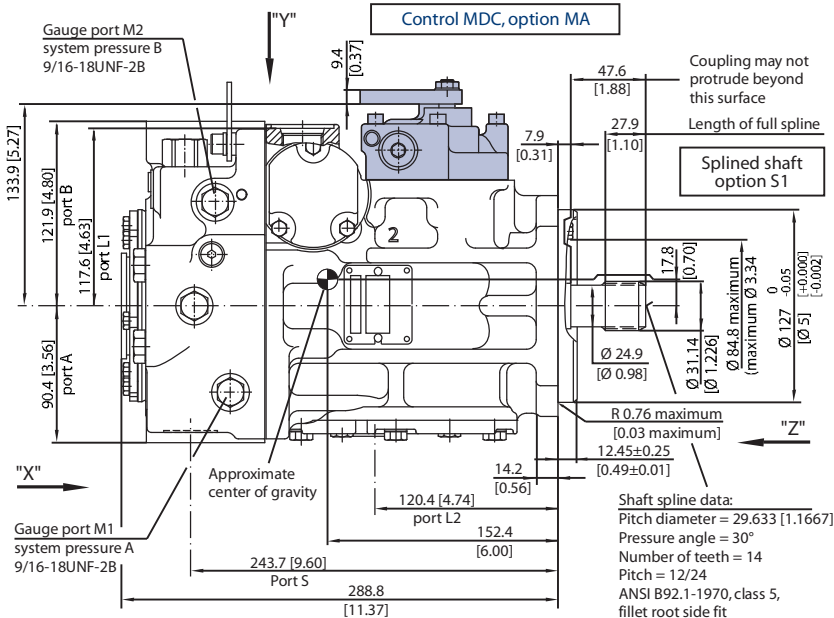


P102 041

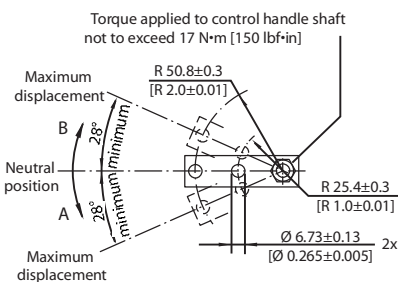
mm [in]

**FRAME SIZE 055**

Manual displacement control (MDC), endcap side ports, option 60



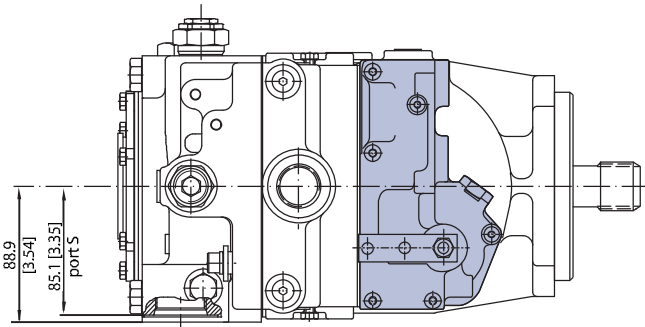
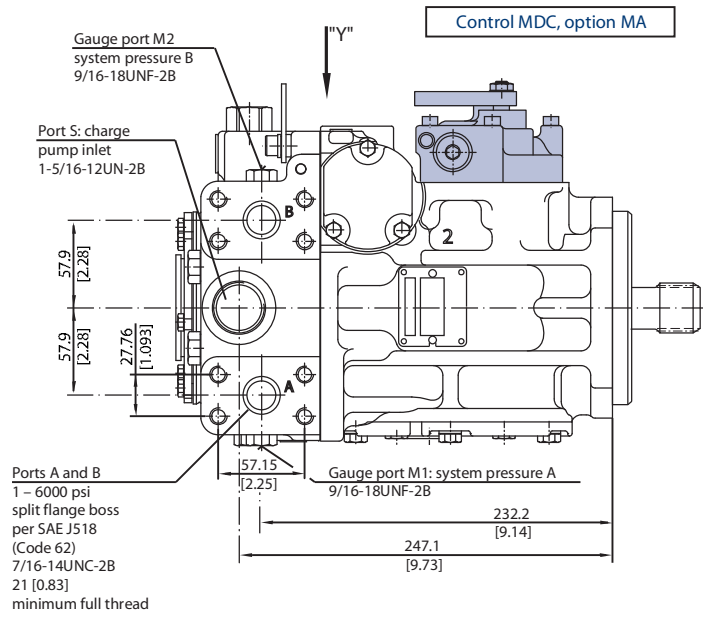
**Manual Displacement Control Handle Dimensions**



P102 042

**FRAME SIZE 055  
(continued)**

*Manual displacement control (MDC) endcap twin ports, option 80*



View "Y"

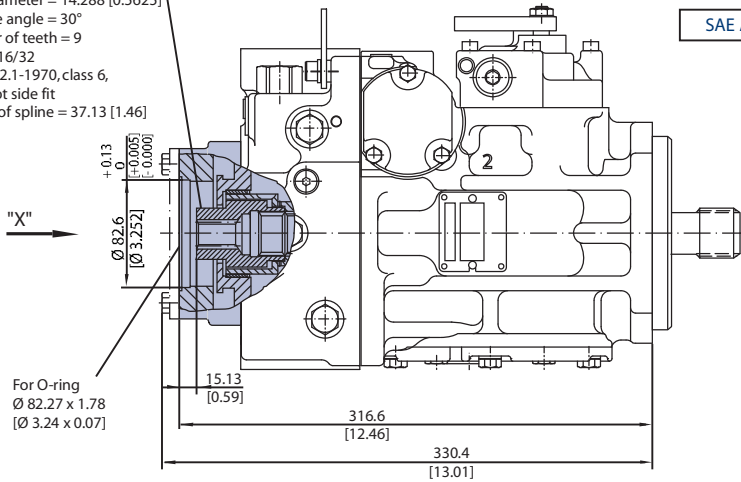
P102 043

mm [in]

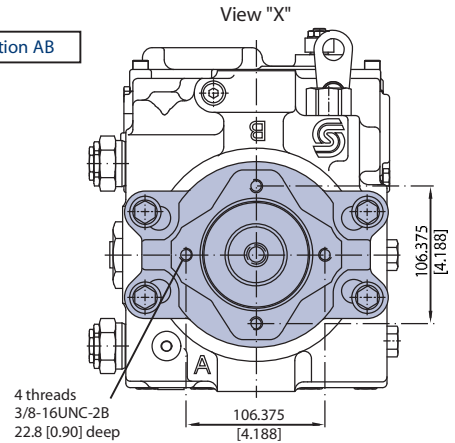
**FRAME SIZE 055  
(continued)**

*Auxiliary mounting pad – options AB, BC, CD, BB*

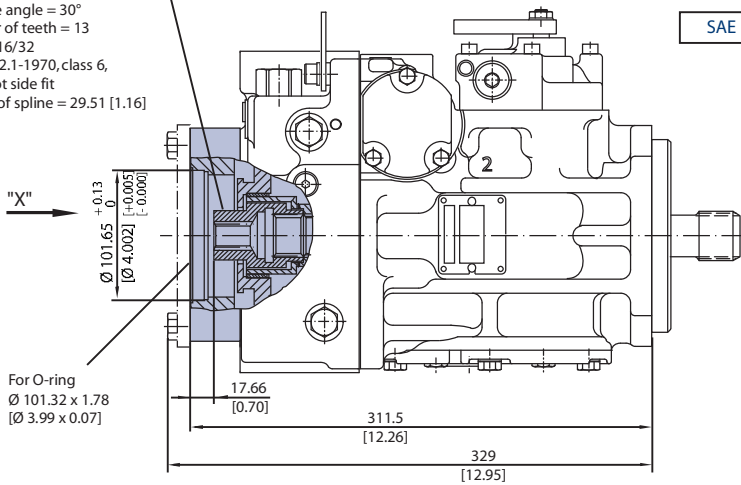
Coupling spline data:  
Pitch diameter = 14.288 [0.5625]  
Pressure angle = 30°  
Number of teeth = 9  
Pitch = 16/32  
ANSI B92.1-1970, class 6,  
fillet root side fit  
Length of spline = 37.13 [1.46]



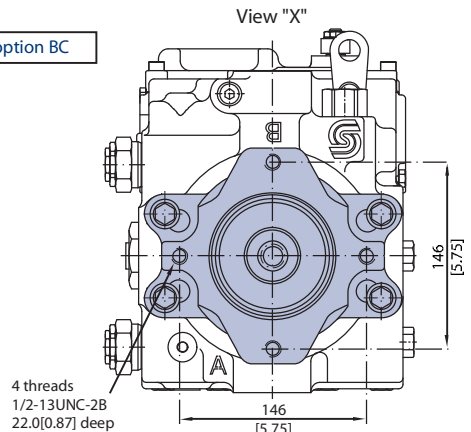
SAE A, option AB



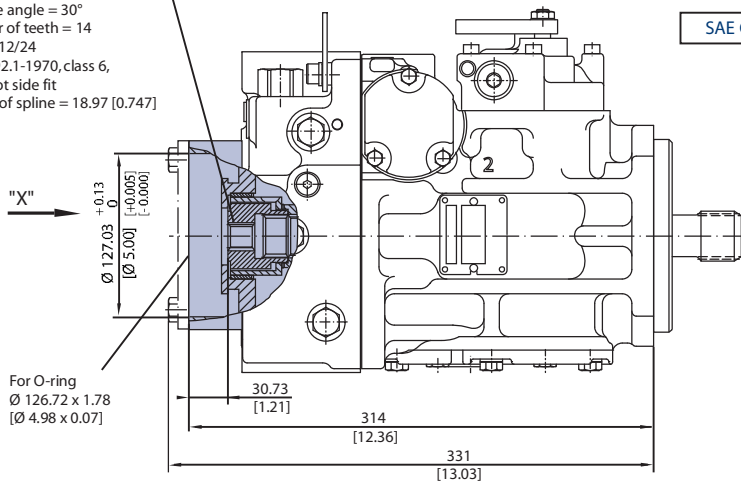
Coupling spline data:  
Pitch diameter = 20.6375 [0.8125]  
Pressure angle = 30°  
Number of teeth = 13  
Pitch = 16/32  
ANSI B92.1-1970, class 6,  
fillet root side fit  
Length of spline = 29.51 [1.16]



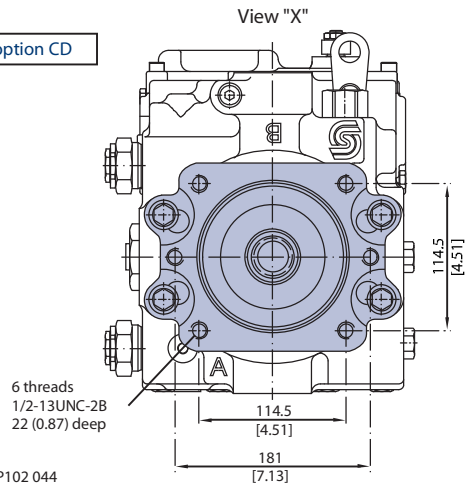
SAE B, option BC



Coupling spline data:  
Pitch diameter = 29.6333 [1.167]  
Pressure angle = 30°  
Number of teeth = 14  
Pitch = 12/24  
ANSI B92.1-1970, class 6,  
fillet root side fit  
Length of spline = 18.97 [0.747]



SAE C, option CD

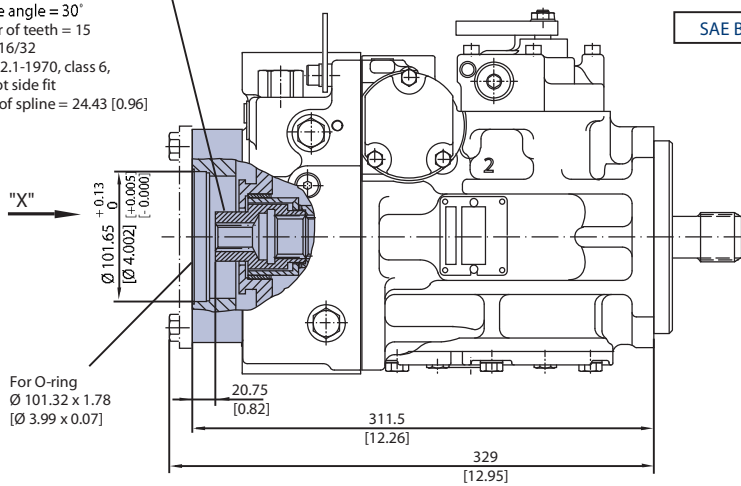


P102 044

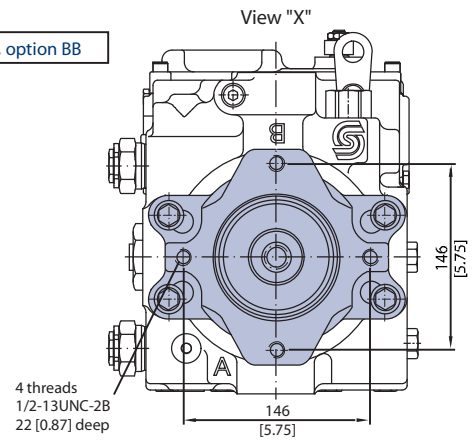
**FRAME SIZE 055**  
**(continued)**

*Auxiliary mounting pad – options AB, BC, CD, BB*

Coupling spline data:  
Pitch diameter = 23.8125 [0.9375]  
Pressure angle = 30°  
Number of teeth = 15  
Pitch = 16/32  
ANSI B92.1-1970, class 6,  
fillet root side fit  
Length of spline = 24.43 [0.96]



For O-ring  
 $\varnothing 101.32 \times 1.78$   
[3.99 x 0.07]

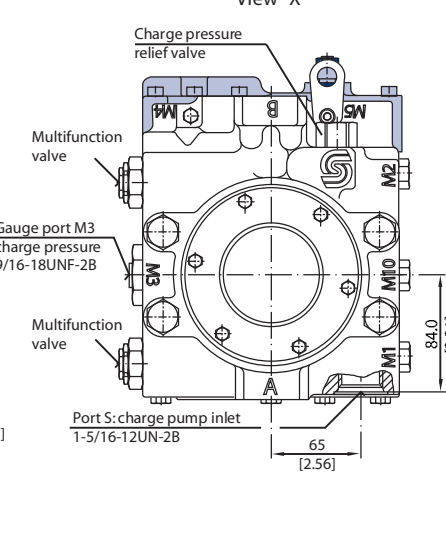
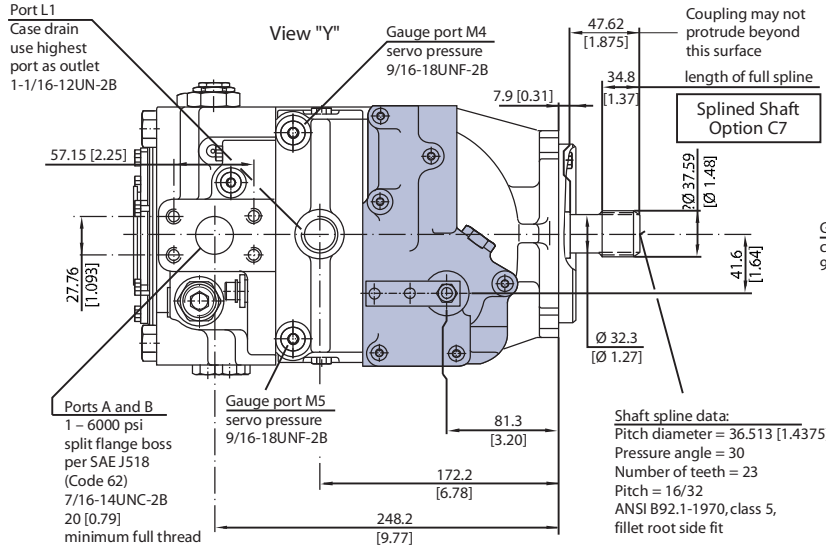
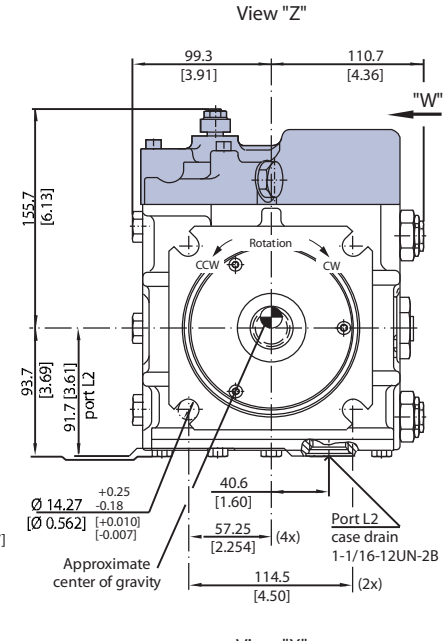
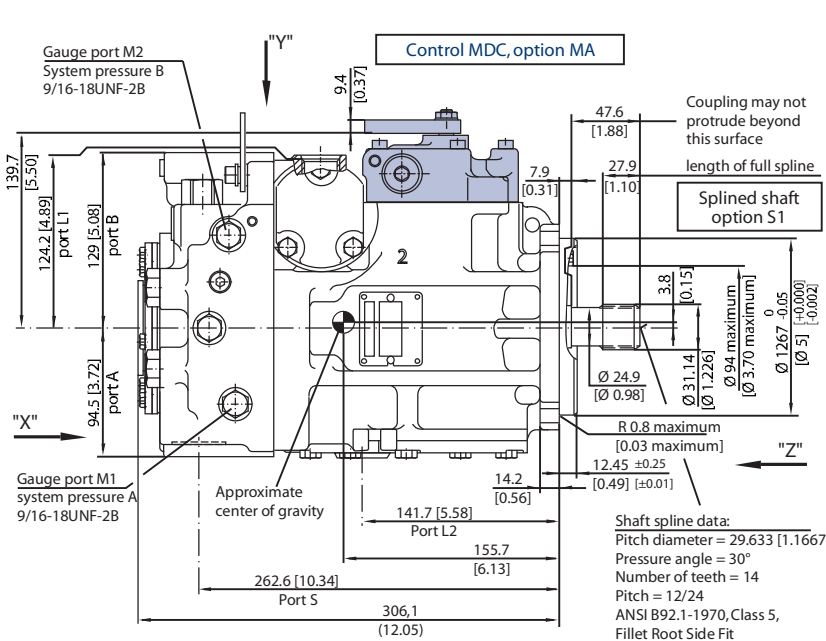


P102 045

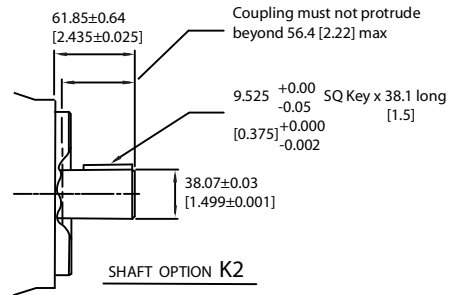
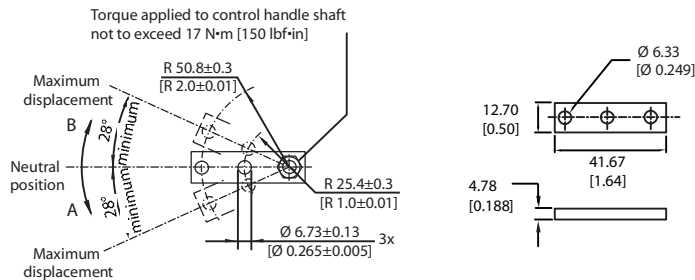
mm [in]

**FRAME SIZE 075**

Manual Displacement Control (MDC) Endcap Side Ports, Option 60

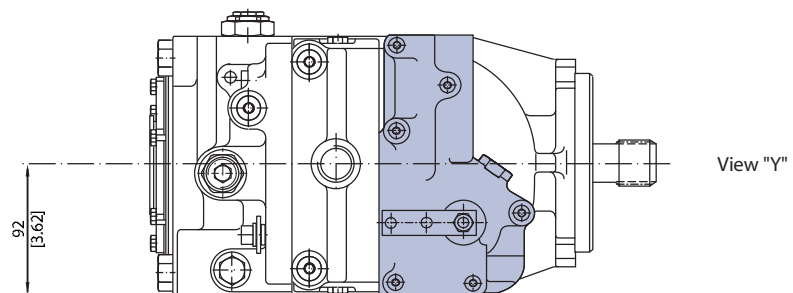
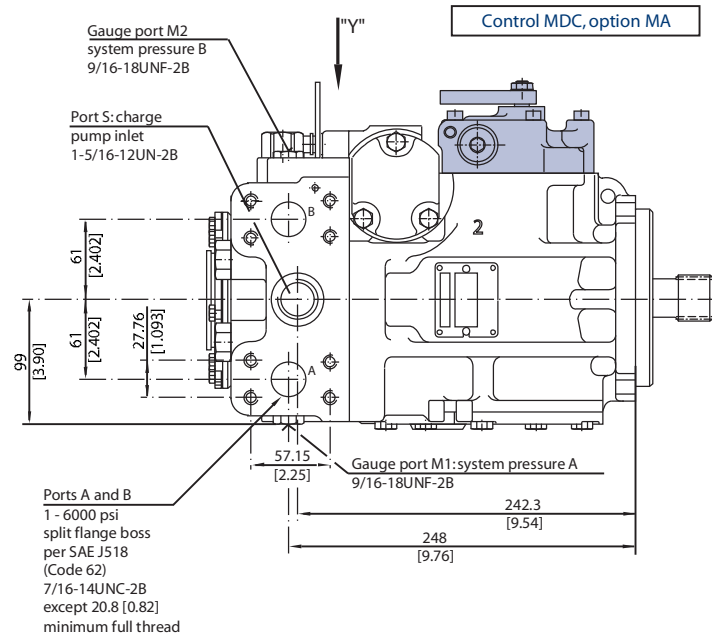


Manual displacement control handle dimensions



**FRAME SIZE 075  
(continued)**

*Manual Displacement Control (MDC), endcap twin ports, option 80*



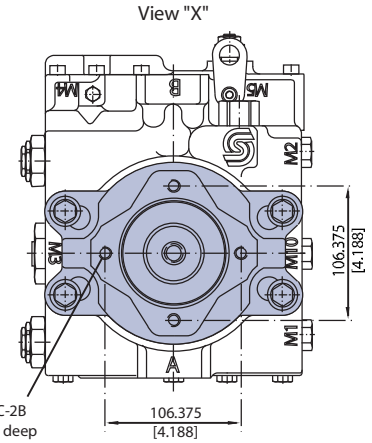
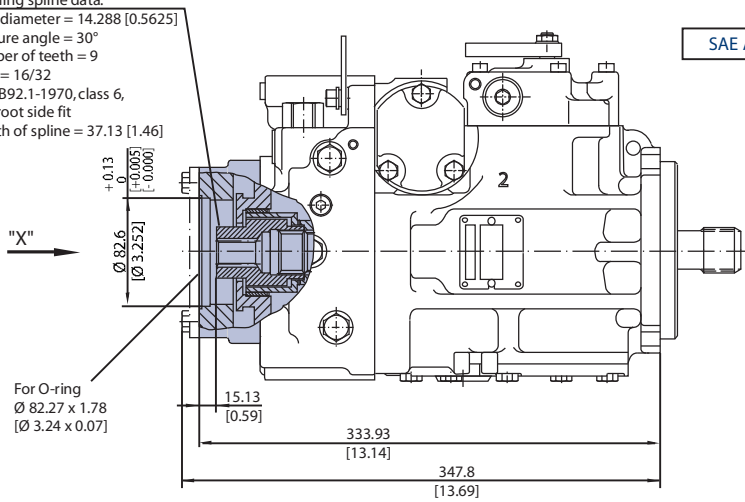
P102 047

mm [in]

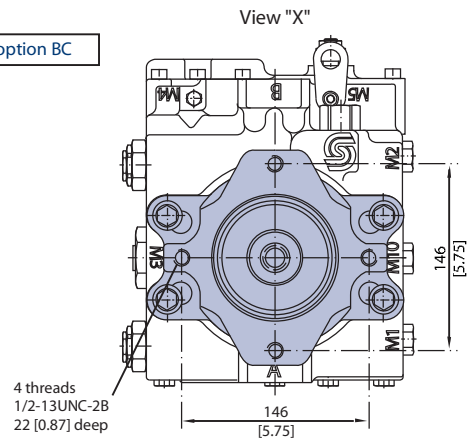
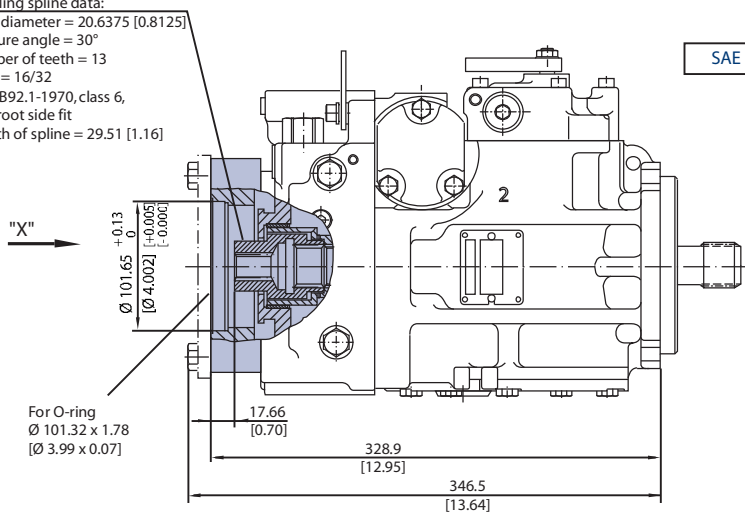
**FRAME SIZE 075  
(continued)**

*Auxiliary mounting pad – Options AB, BC, CD, BB*

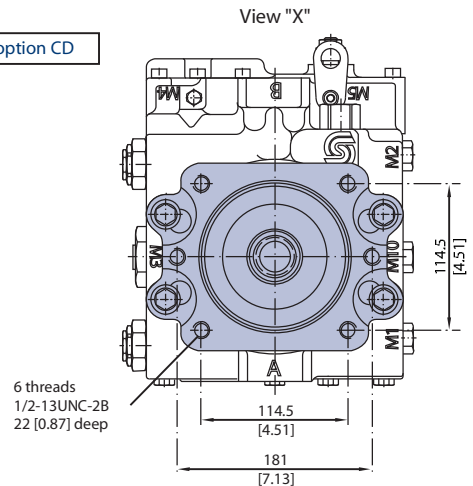
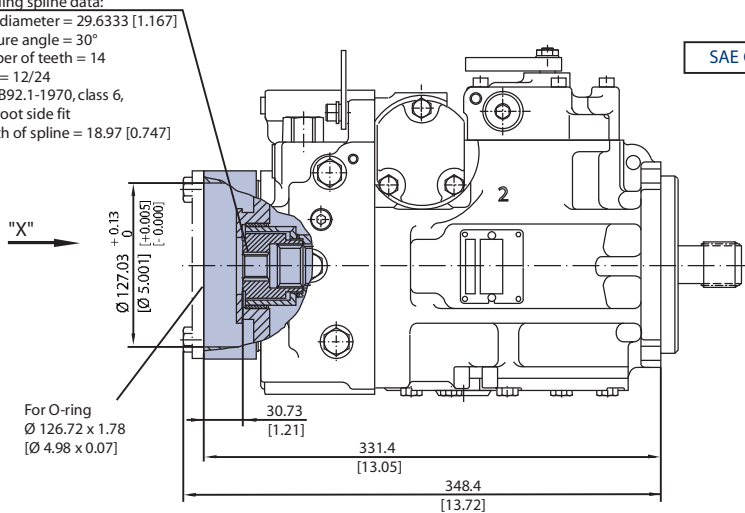
Coupling spline data:  
Pitch diameter = 14.288 [0.5625]  
Pressure angle = 30°  
Number of teeth = 9  
Pitch = 16/32  
ANSI B92.1-1970, class 6,  
fillet root side fit  
Length of spline = 37.13 [1.46]



Coupling spline data:  
Pitch diameter = 20.6375 [0.8125]  
Pressure angle = 30°  
Number of teeth = 13  
Pitch = 16/32  
ANSI B92.1-1970, class 6,  
fillet root side fit  
Length of spline = 29.51 [1.16]



Coupling spline data:  
Pitch diameter = 29.6333 [1.167]  
Pressure angle = 30°  
Number of teeth = 14  
Pitch = 12/24  
ANSI B92.1-1970, class 6,  
fillet root side fit  
Length of spline = 18.97 [0.747]

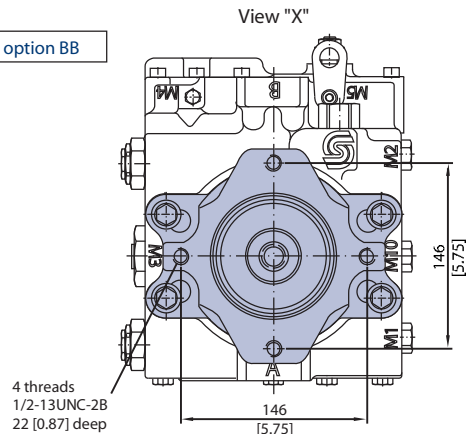
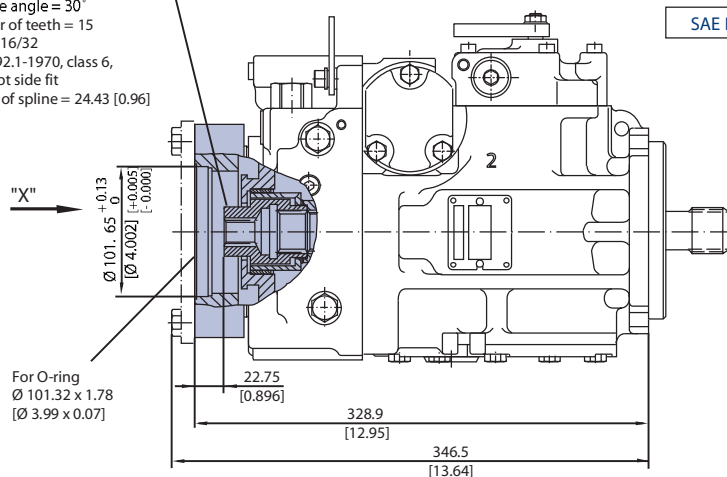


P102 048

**FRAME SIZE 075**  
**(continued)**

*Auxiliary mounting pad – options AB, BC, CD, BB*

Coupling spline data:  
Pitch diameter = 23.8125 [0.9375]  
Pressure angle = 30°  
Number of teeth = 15  
Pitch = 16/32  
ANSI B92.1-1970, class 6,  
fillet root side fit  
Length of spline = 24.43 [0.96]

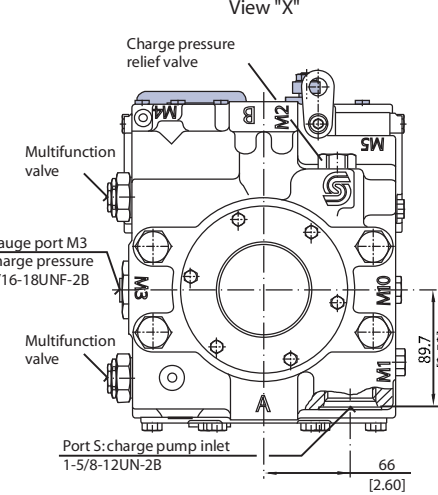
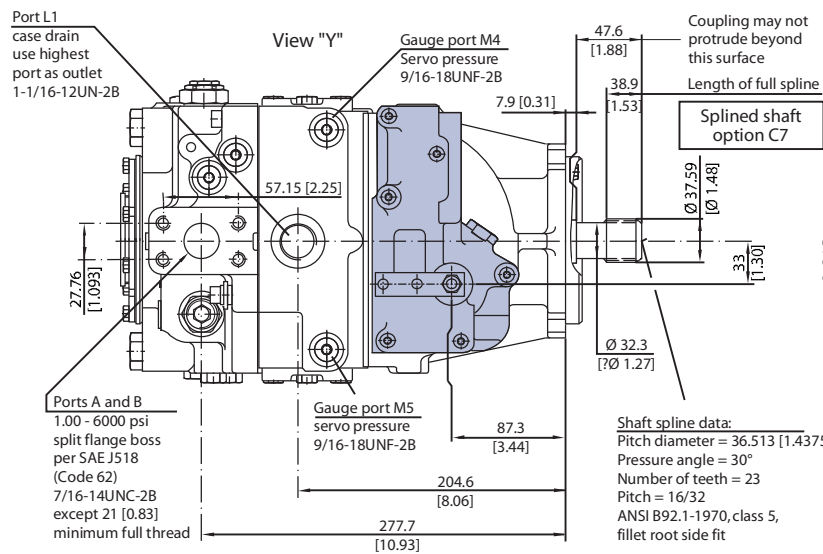
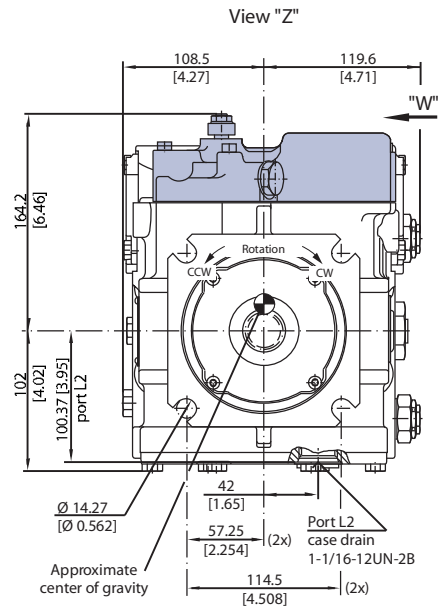
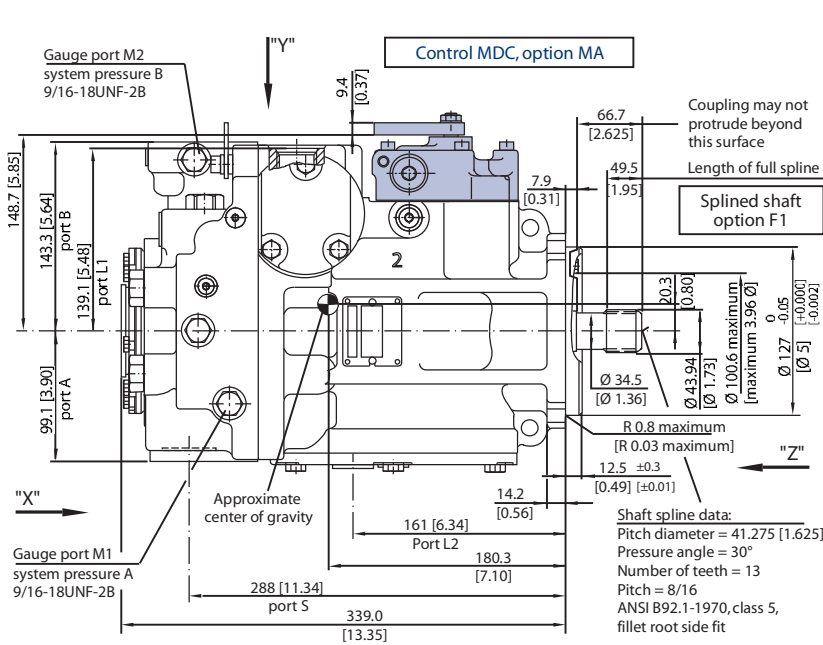


P102 049

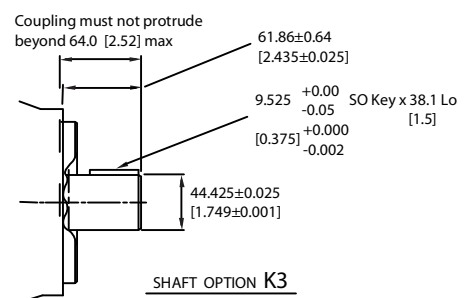
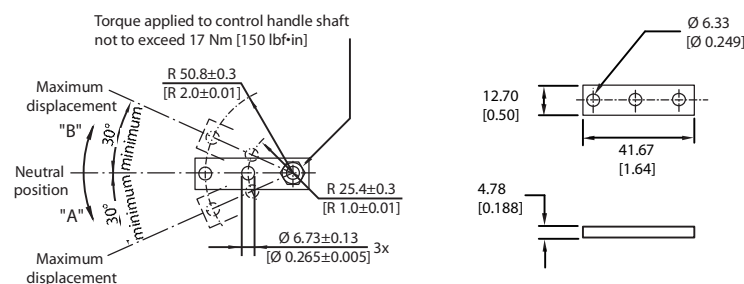
mm [in]

**FRAME SIZE 100**

*Manual Displacement Control (MDC), endcap side ports, option 60*

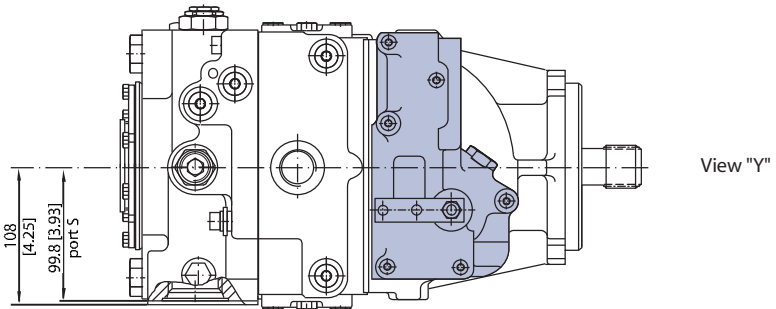
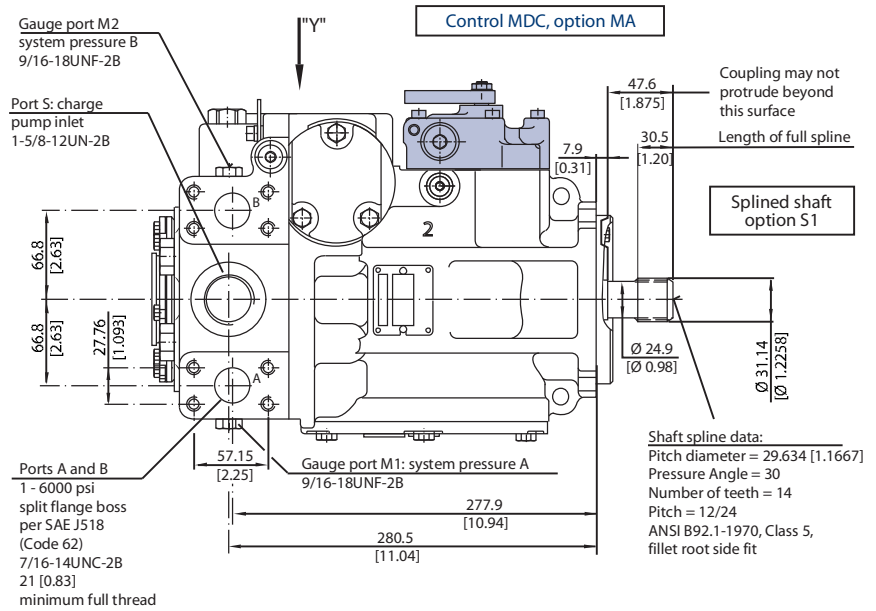


**Manual displacement control handle dimensions**



**FRAME SIZE 100  
(continued)**

*Manual Displacement Control (MDC), endcap twin ports, option 80*



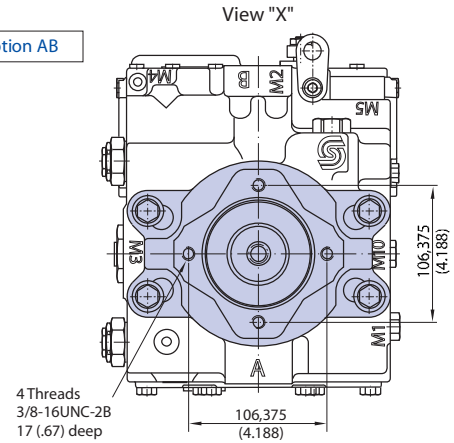
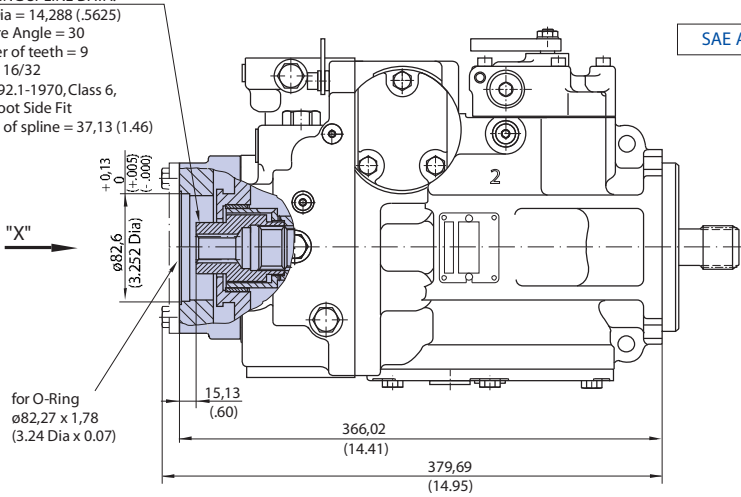
P102 051

mm [in]

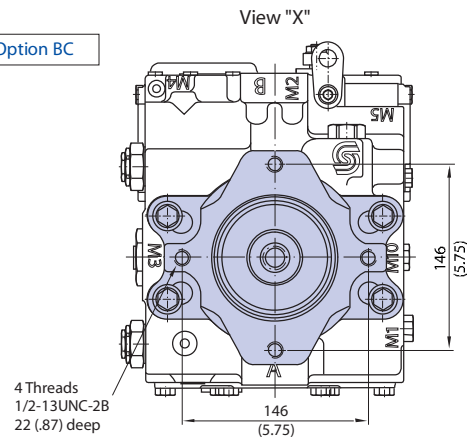
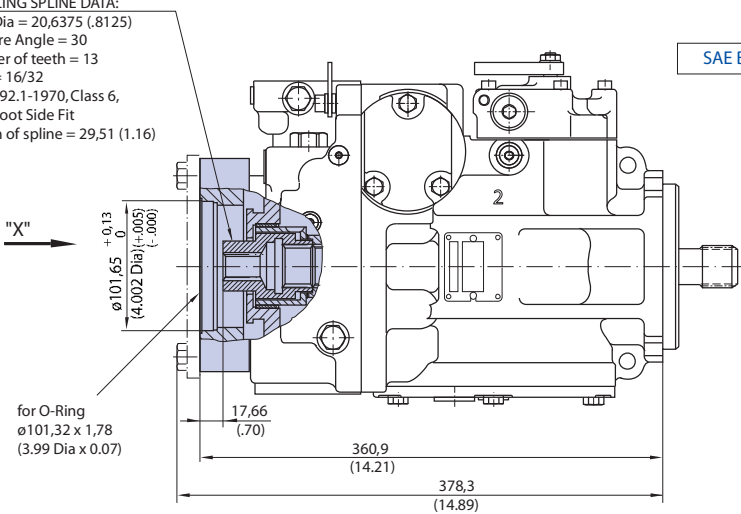
**FRAME SIZE 100  
(continued)**

*Auxiliary mounting pads, SAE AB, SAE BC, SAE CD*

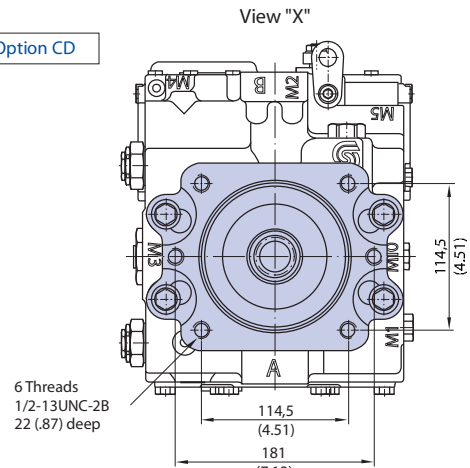
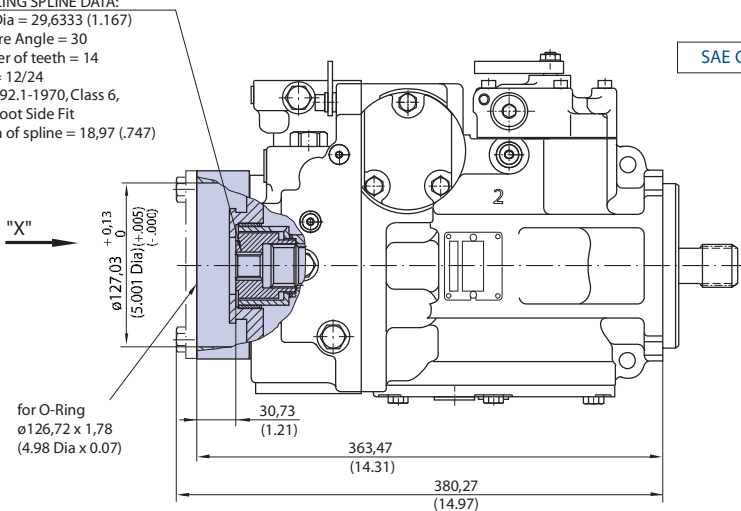
COUPLING SPLINE DATA:  
Pitch Dia = 14,288 (.5625)  
Pressure Angle = 30  
Number of teeth = 9  
Pitch = 16/32  
ANSI B92.1-1970, Class 6,  
Fillet Root Side Fit  
Length of spline = 37,13 (1.46)



COUPLING SPLINE DATA:  
Pitch Dia = 20,6375 (.8125)  
Pressure Angle = 30  
Number of teeth = 13  
Pitch = 16/32  
ANSI B92.1-1970, Class 6,  
Fillet Root Side Fit  
Length of spline = 29,51 (1.16)



COUPLING SPLINE DATA:  
Pitch Dia = 29,6333 (1.167)  
Pressure Angle = 30  
Number of teeth = 14  
Pitch = 12/24  
ANSI B92.1-1970, Class 6,  
Fillet Root Side Fit  
Length of spline = 18,97 (.747)



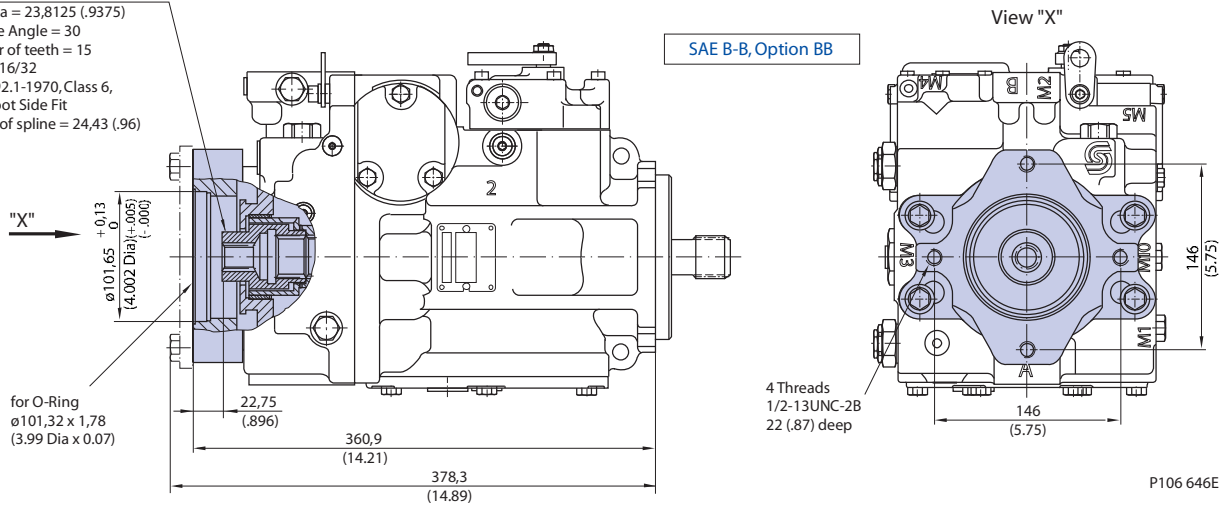
P106 645E

mm [in]

**FRAME SIZE 100  
(continued)**

*Auxiliary mounting pad, SAE BB*

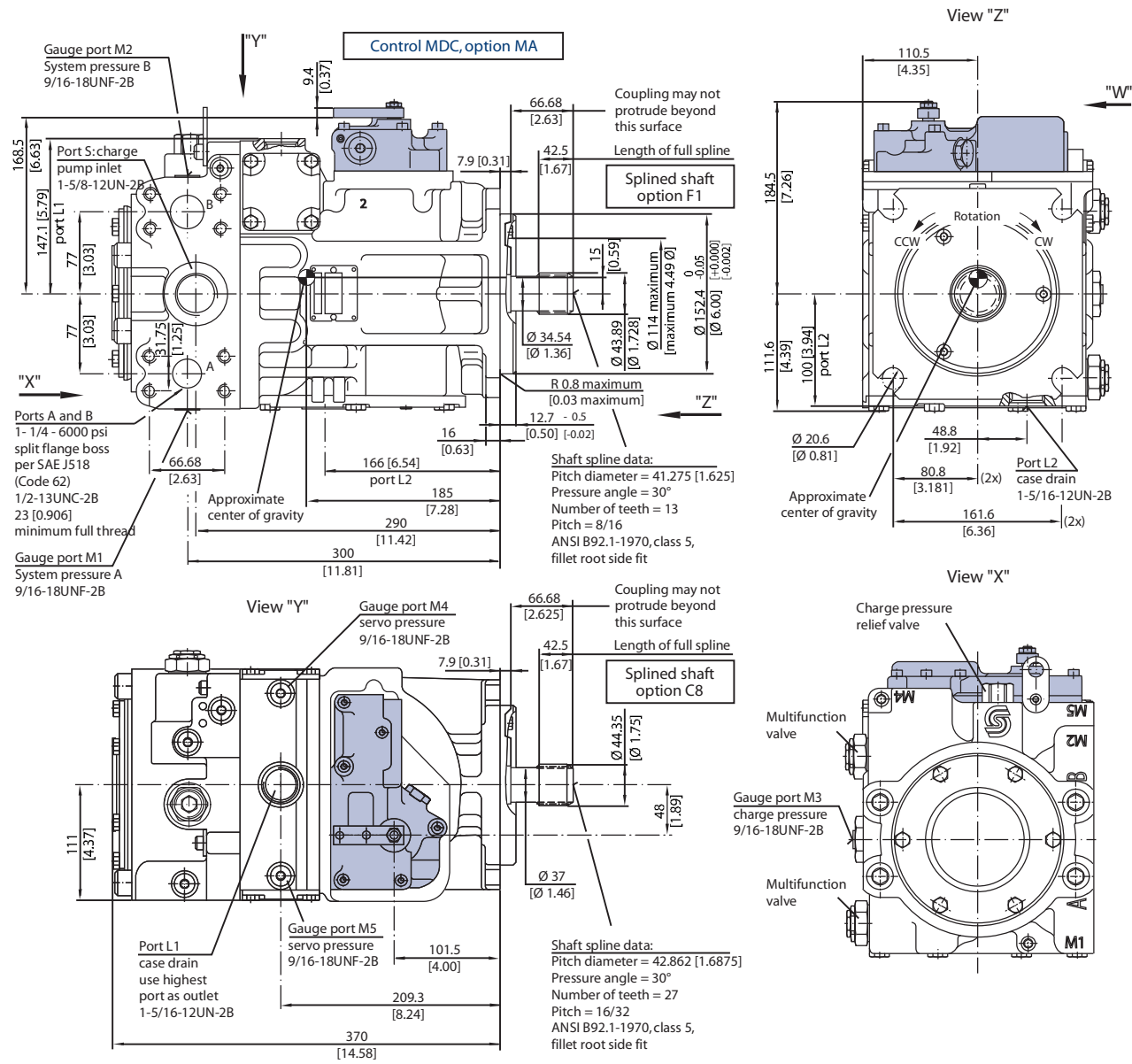
COUPLING SPLINE DATA:  
Pitch Dia = 23,8125 (.9375)  
Pressure Angle = 30  
Number of teeth = 15  
Pitch = 16/32  
ANSI B92.1-1970, Class 6,  
Fillet Root Side Fit  
Length of spline = 24,43 (.96)



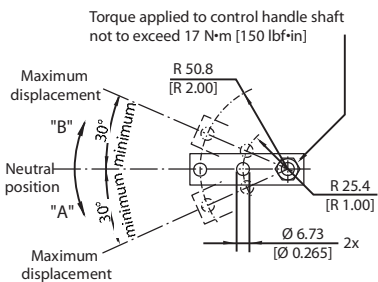
mm [in]

**FRAME SIZE 130**

*Manual Displacement Control (MDC), end cap twin ports, option 80*



**Manual displacement control handle dimensions**



P102 052

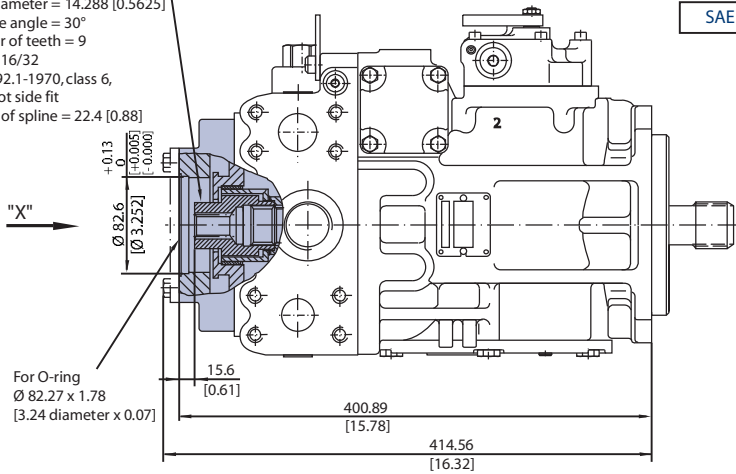
mm [in]

**FRAME SIZE 130  
(continued)**

*Auxiliary mounting pad - options AB, BC, CD, DE, BB*

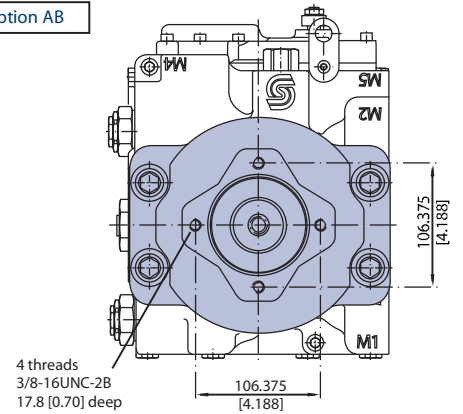
**Coupling spline data:**

Pitch diameter = 14.288 [0.5625]  
Pressure angle = 30°  
Number of teeth = 9  
Pitch = 16/32  
ANSI B92.1-1970, class 6,  
fillet root side fit  
Length of spline = 22.4 [0.88]



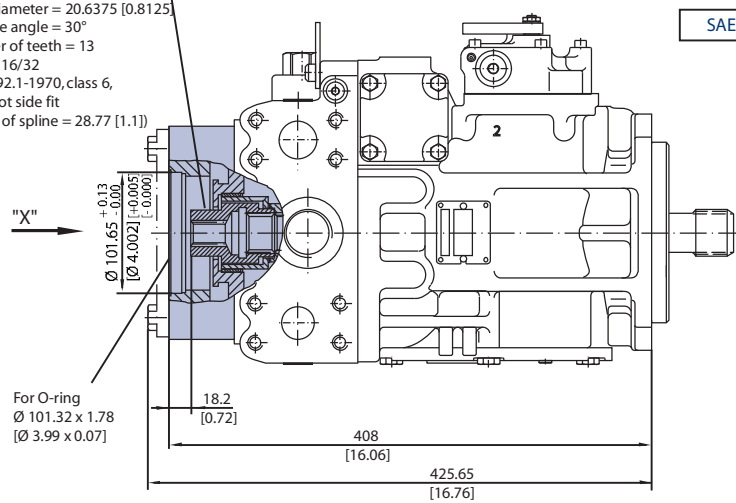
SAE A, option AB

View "X"



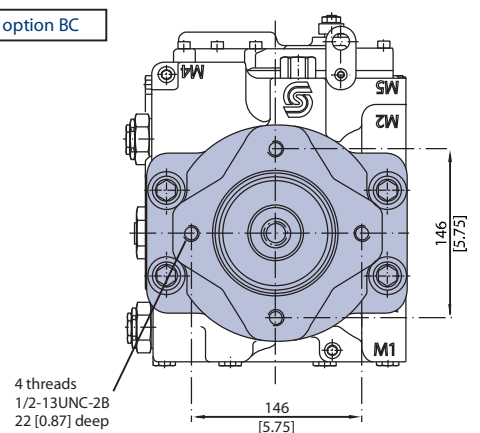
**Coupling spline data:**

Pitch diameter = 20.6375 [0.8125]  
Pressure angle = 30°  
Number of teeth = 13  
Pitch = 16/32  
ANSI B92.1-1970, class 6,  
fillet root side fit  
Length of spline = 28.77 [1.11]



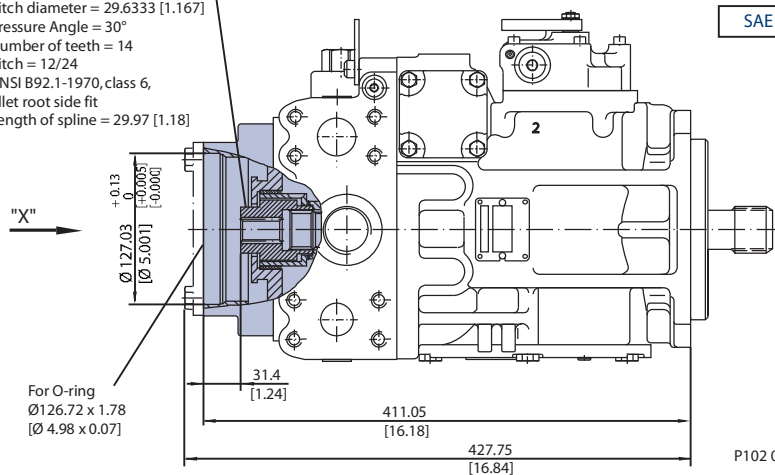
SAE B, option BC

View "X"



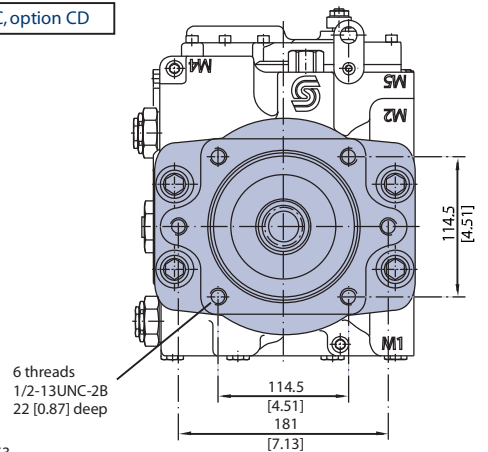
**Coupling spline data:**

Pitch diameter = 29.6333 [1.167]  
Pressure Angle = 30°  
Number of teeth = 14  
Pitch = 12/24  
ANSI B92.1-1970, class 6,  
fillet root side fit  
Length of spline = 29.97 [1.18]



SAE C, option CD

View "X"



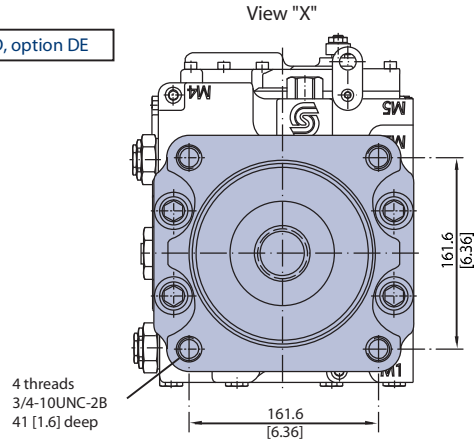
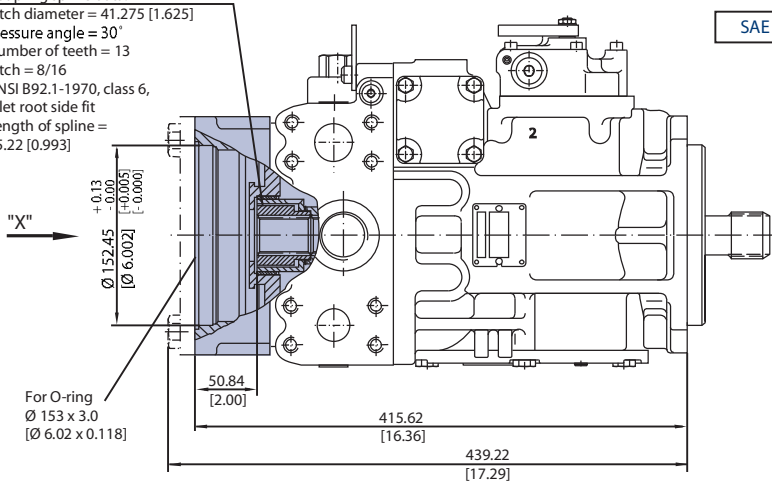
P102 053

mm [in]

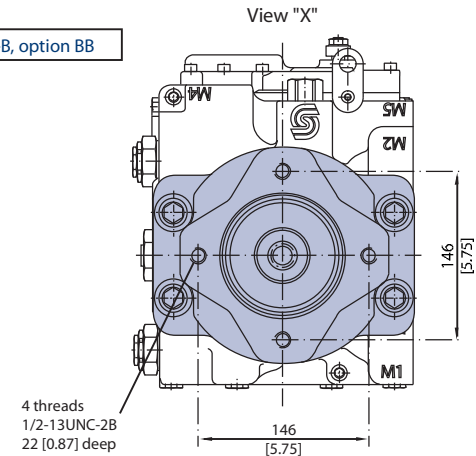
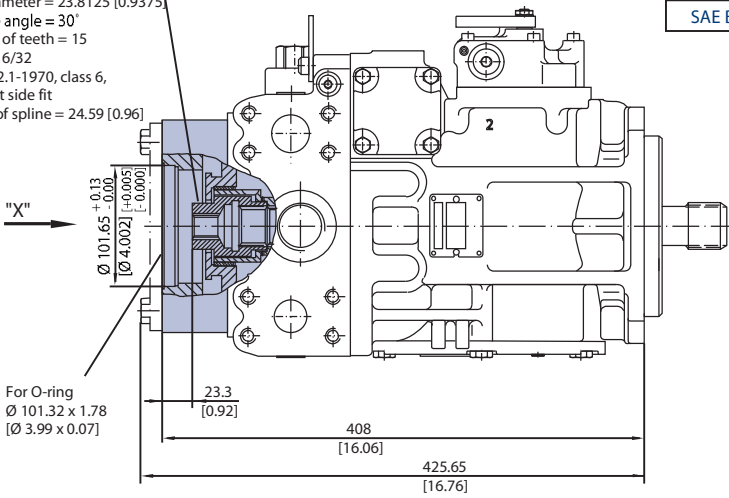
**FRAME SIZE 130  
(continued)**

*Auxiliary mounting pad - options AB, BC, CD, DE, BB*

Coupling spline data:  
Pitch diameter = 41.275 [1.625]  
Pressure angle = 30°  
Number of teeth = 13  
Pitch = 8/16  
ANSI B92.1-1970, class 6,  
fillet root side fit  
Length of spline = 25.22 [0.993]



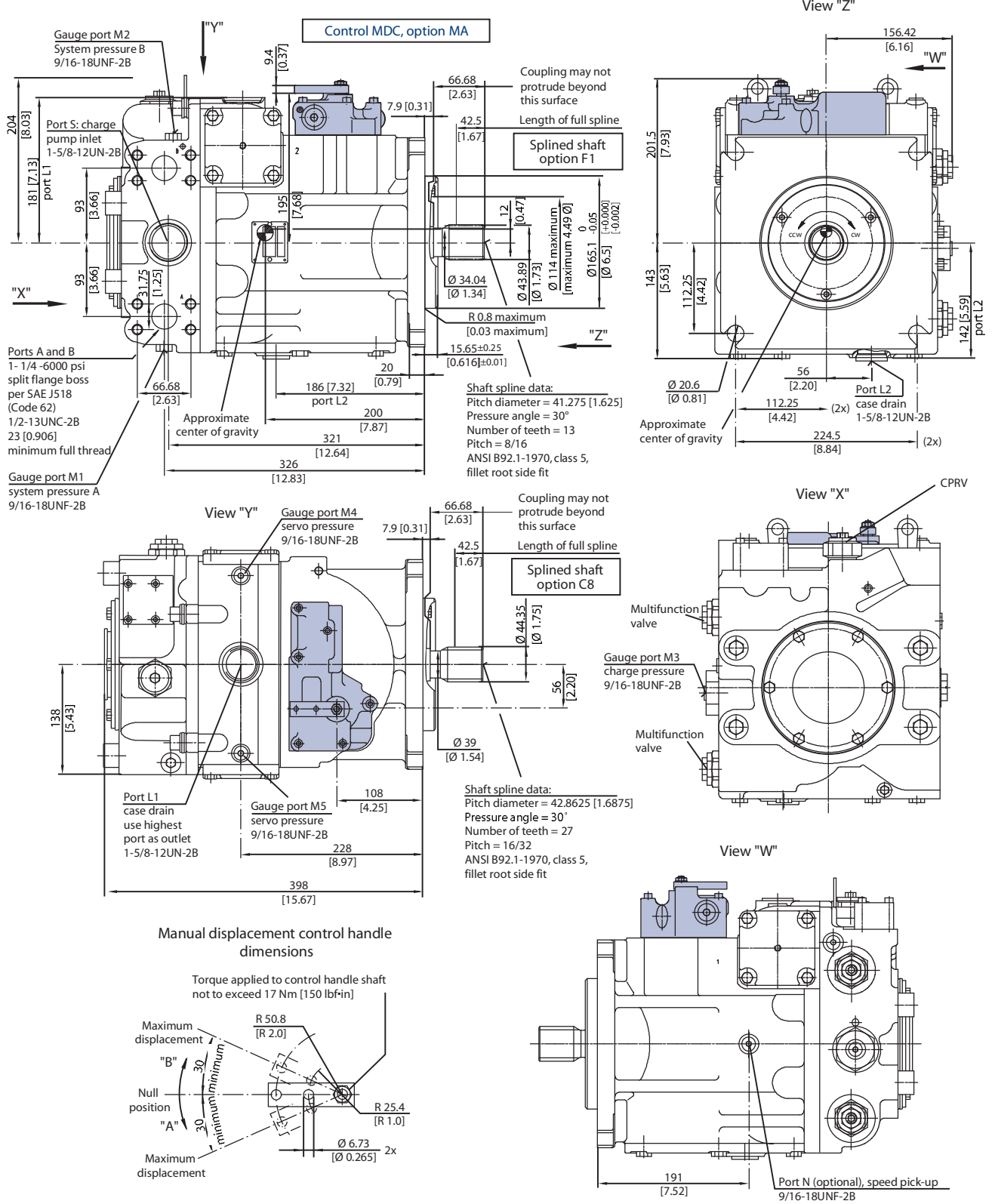
Coupling spline data:  
Pitch diameter = 23.8125 [0.9375]  
Pressure angle = 30°  
Number of teeth = 15  
Pitch = 16/32  
ANSI B92.1-1970, class 6,  
fillet root side fit  
Length of spline = 24.59 [0.96]



P102 054

**FRAME SIZE 180**

*Manual Displacement Control (MDC), end cap twin ports, option 80*

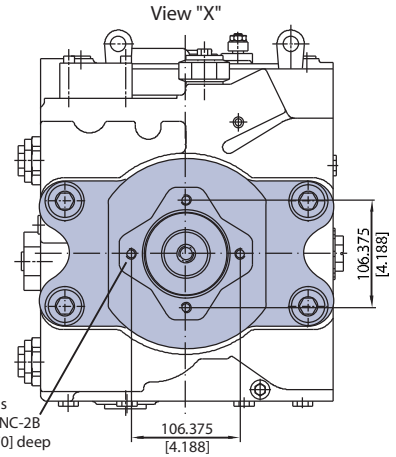
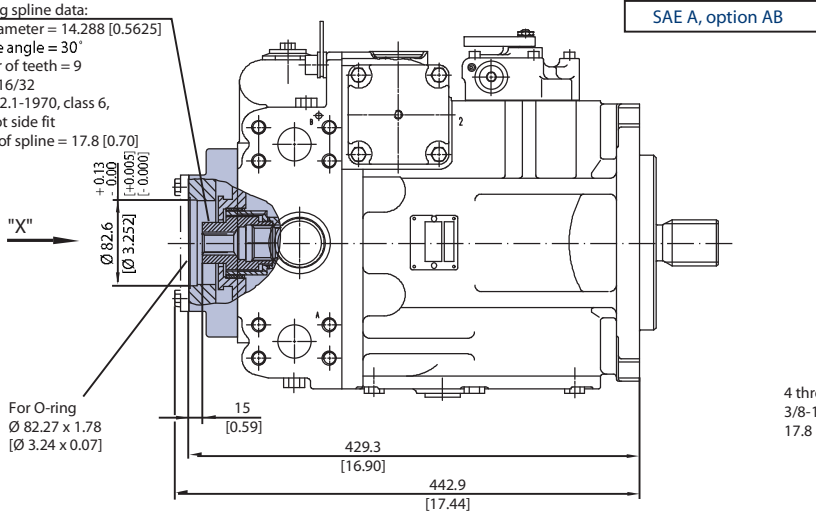


mm [in]

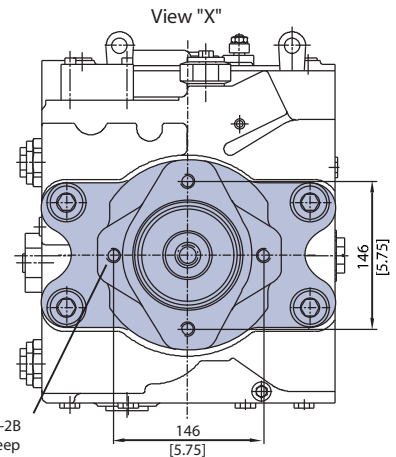
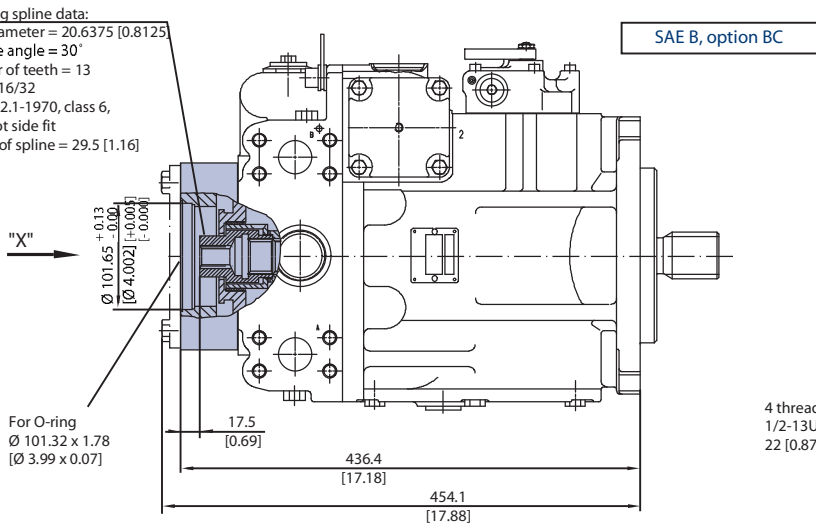
**FRAME SIZE 180  
 (continued)**

*Auxiliary mounting pad - options AB, BC, CD, DE, EF, EG, BB*

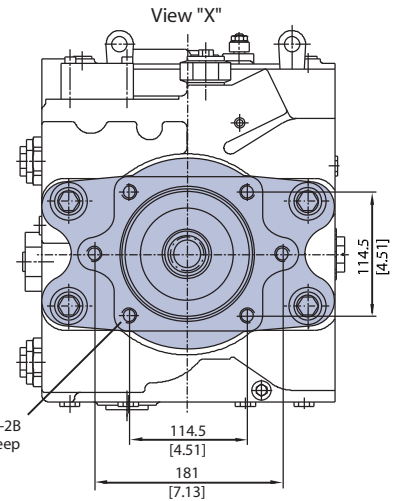
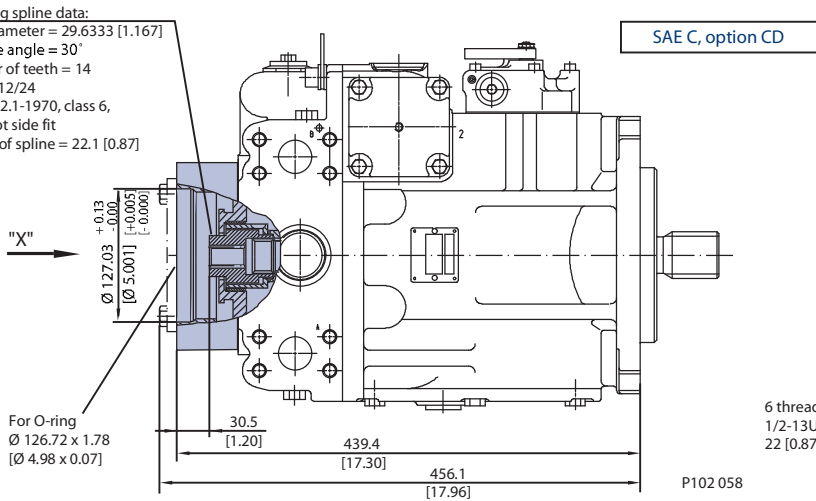
Coupling spline data:  
 Pitch diameter = 14.288 [0.5625]  
 Pressure angle = 30°  
 Number of teeth = 9  
 Pitch = 16/32  
 ANSI B92.1-1970, class 6,  
 fillet root side fit  
 Length of spline = 17.8 [0.70]



Coupling spline data:  
 Pitch diameter = 20.6375 [0.8125]  
 Pressure angle = 30°  
 Number of teeth = 13  
 Pitch = 16/32  
 ANSI B92.1-1970, class 6,  
 fillet root side fit  
 Length of spline = 29.5 [1.16]



Coupling spline data:  
 Pitch diameter = 29.6333 [1.167]  
 Pressure angle = 30°  
 Number of teeth = 14  
 Pitch = 12/24  
 ANSI B92.1-1970, class 6,  
 fillet root side fit  
 Length of spline = 22.1 [0.87]



P102 058

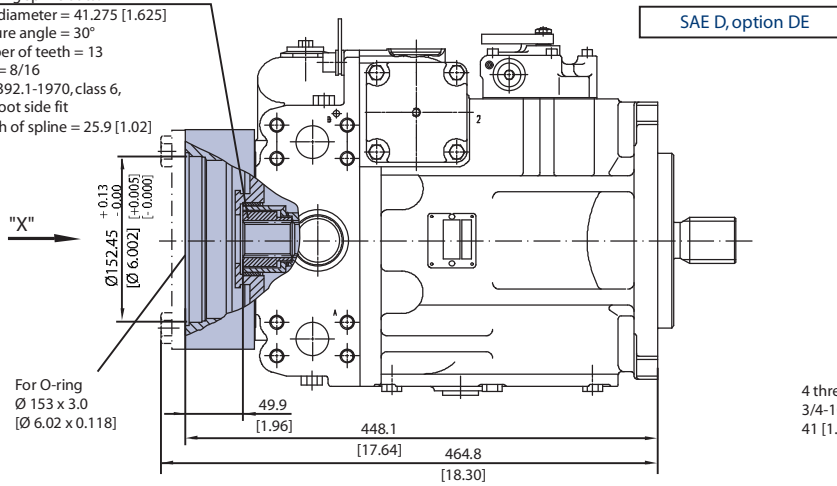
mm [in]

**FRAME SIZE 180  
(continued)**

*Auxiliary mounting pad - options AB, BC, CD, DE, EF, EG, BB*

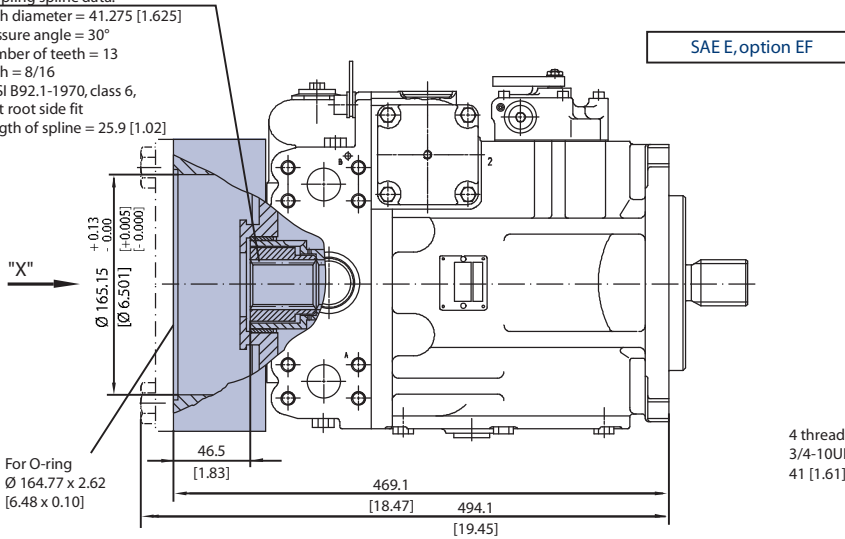
**Coupling spline data:**

Pitch diameter = 41.275 [1.625]  
Pressure angle = 30°  
Number of teeth = 13  
Pitch = 8/16  
ANSI B92.1-1970, class 6,  
fillet root side fit  
Length of spline = 25.9 [1.02]



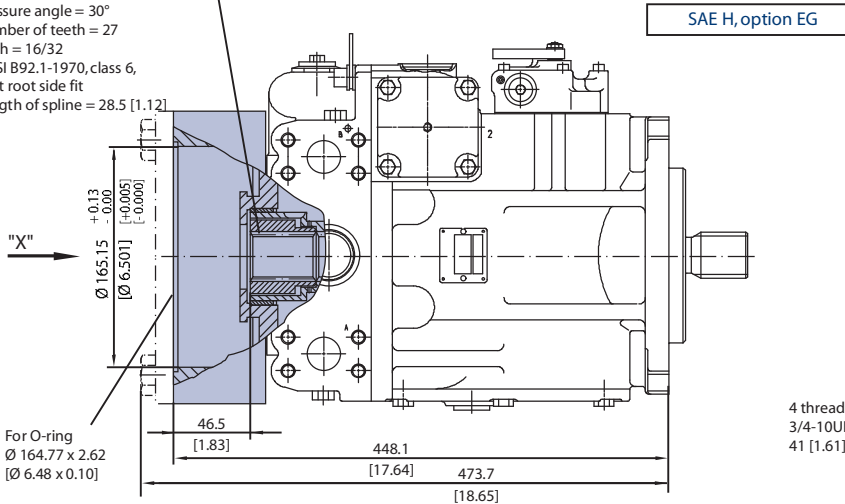
**Coupling spline data:**

Pitch diameter = 41.275 [1.625]  
Pressure angle = 30°  
Number of teeth = 13  
Pitch = 8/16  
ANSI B92.1-1970, class 6,  
fillet root side fit  
Length of spline = 25.9 [1.02]



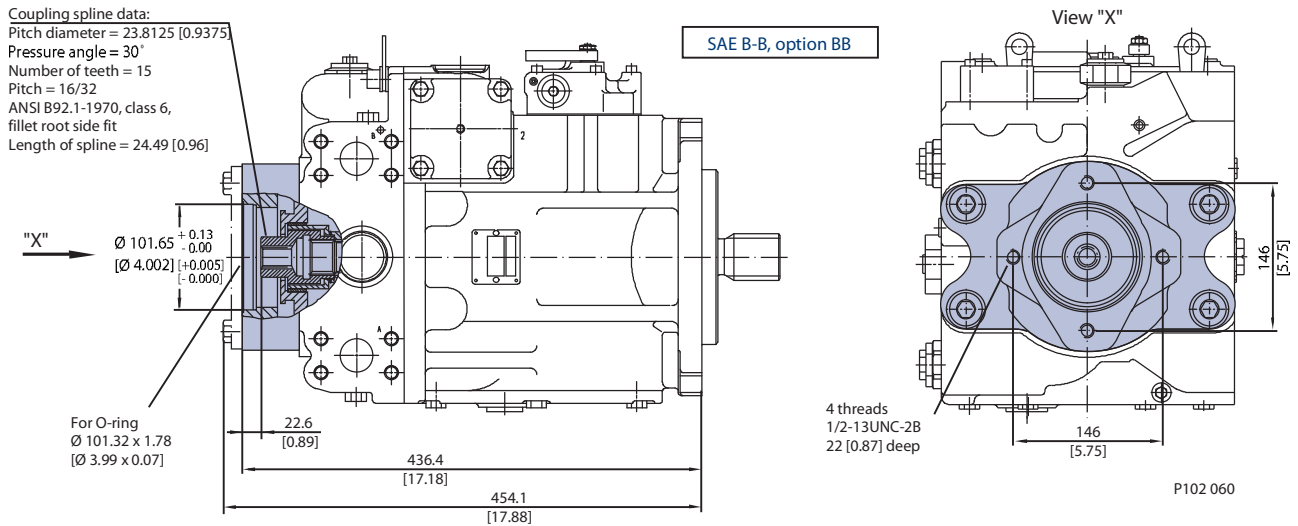
**Coupling spline data:**

Pitch diameter = 42.862 [1.687]  
Pressure angle = 30°  
Number of teeth = 27  
Pitch = 16/32  
ANSI B92.1-1970, class 6,  
fillet root side fit  
Length of spline = 28.5 [1.12]



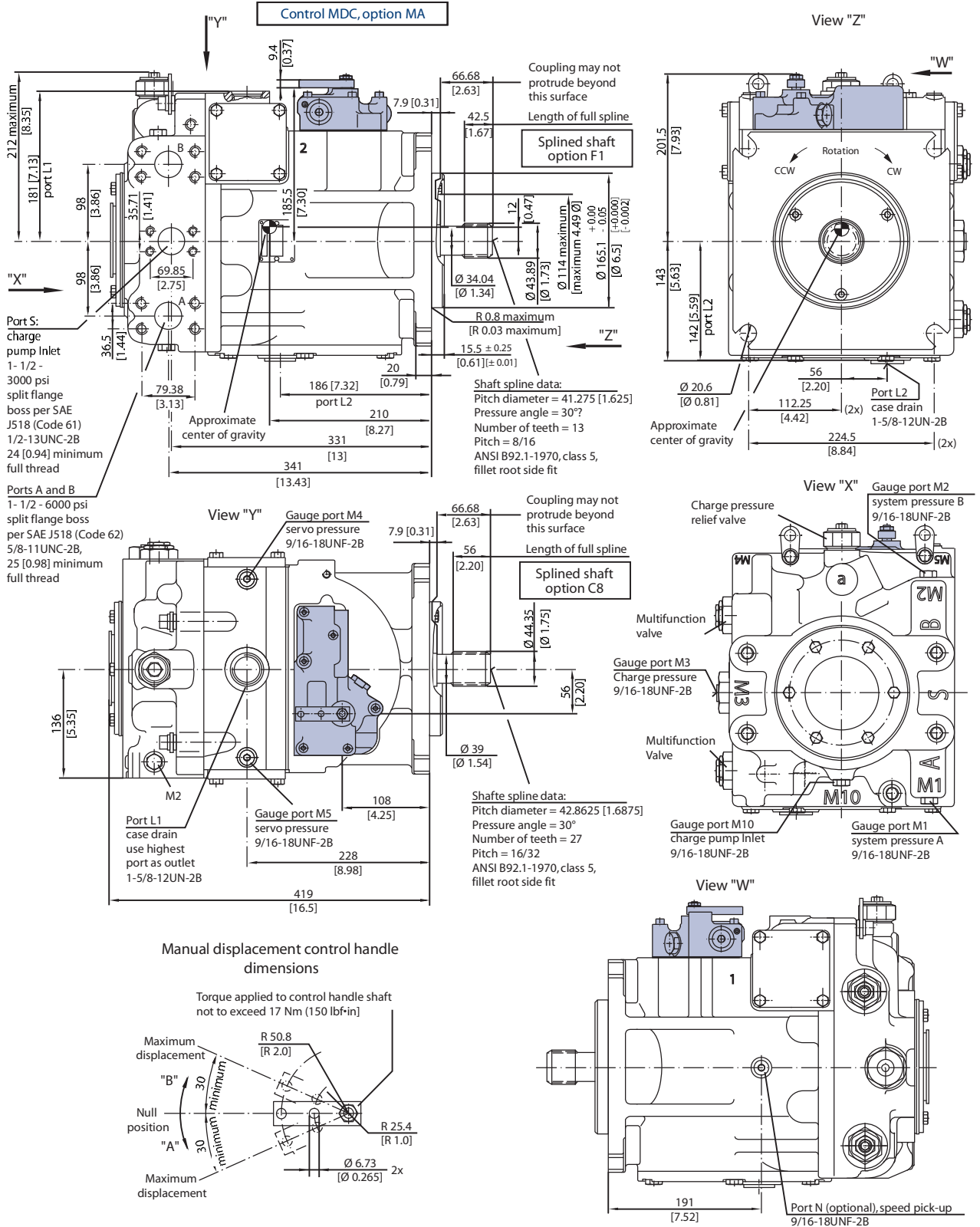
**FRAME SIZE 180  
(continued)**

*Auxiliary mounting pad - options AB, BC, CD, DE, EF, EG, BB*



**FRAME SIZE 250**

*Manual Displacement Control (MDC), end cap twin ports, option 80*

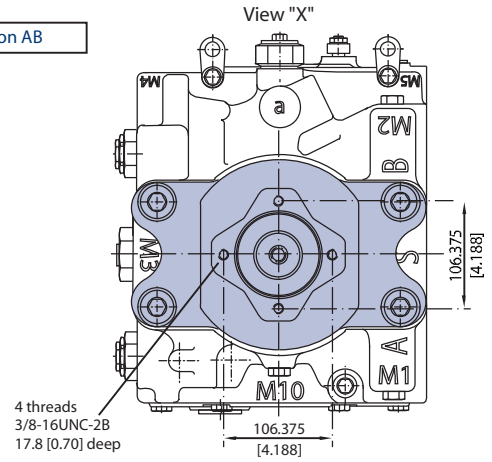
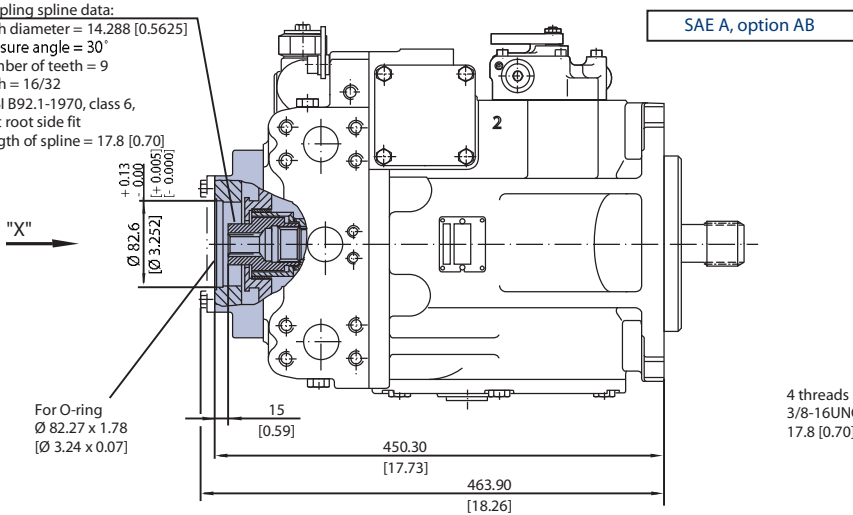


mm [in]

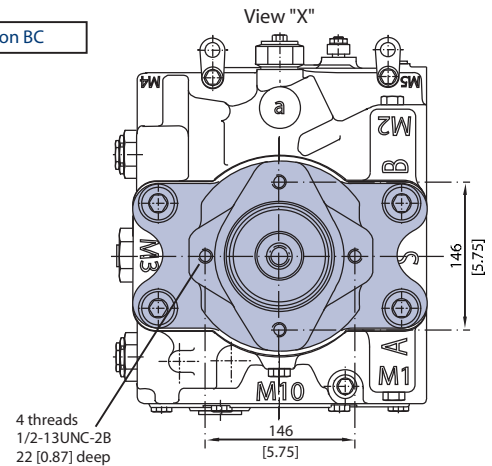
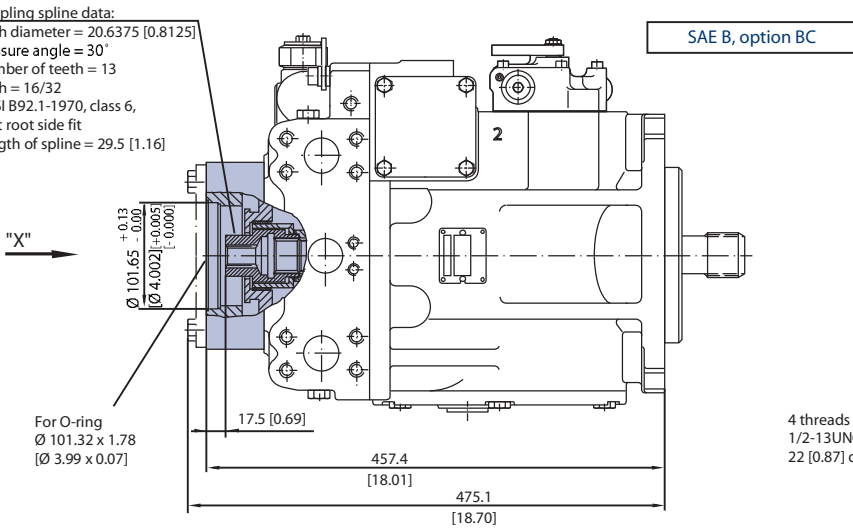
**FRAME SIZE 250  
(continued)**

*Auxiliary mounting pad - options AB, BC, CD, DE, EF, EG, BB*

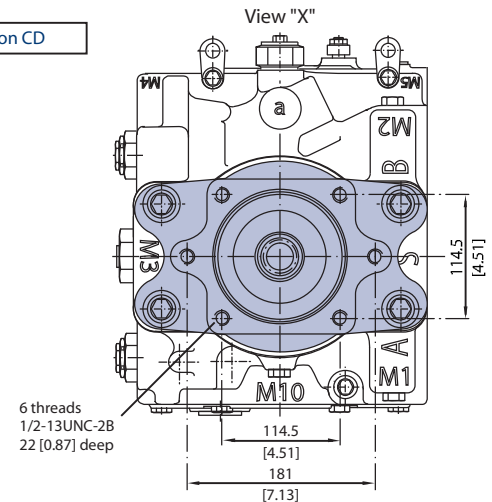
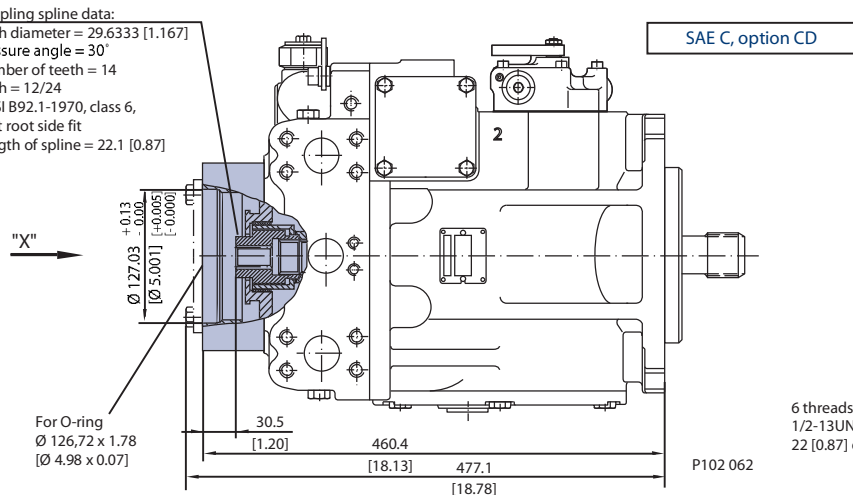
Coupling spline data:  
Pitch diameter = 14.288 [0.5625]  
Pressure angle = 30°  
Number of teeth = 9  
Pitch = 16/32  
ANSI B92.1-1970, class 6,  
fillet root side fit  
Length of spline = 17.8 [0.70]



Coupling spline data:  
Pitch diameter = 20.6375 [0.8125]  
Pressure angle = 30°  
Number of teeth = 13  
Pitch = 16/32  
ANSI B92.1-1970, class 6,  
fillet root side fit  
Length of spline = 29.5 [1.16]



Coupling spline data:  
Pitch diameter = 29.6333 [1.167]  
Pressure angle = 30°  
Number of teeth = 14  
Pitch = 12/24  
ANSI B92.1-1970, class 6,  
fillet root side fit  
Length of spline = 22.1 [0.87]

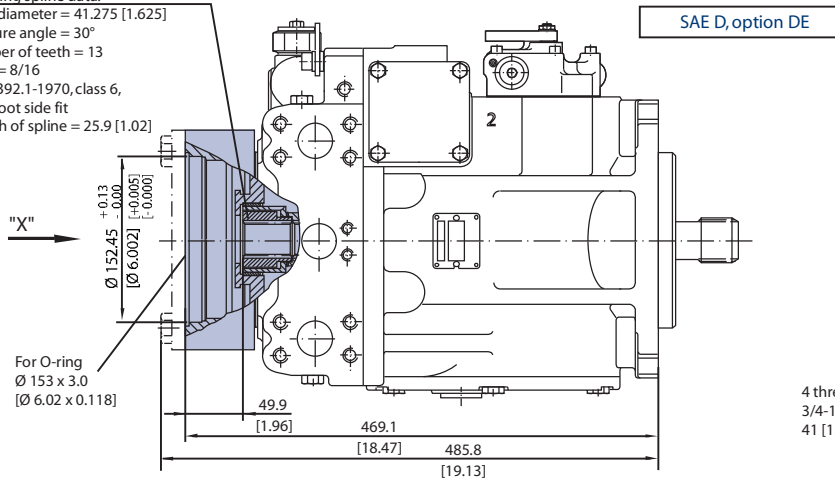


**FRAME SIZE 250  
(continued)**

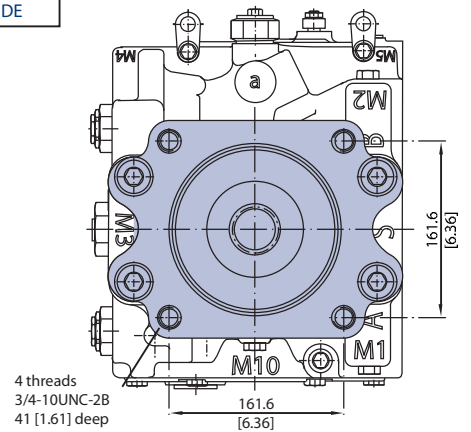
*Auxiliary mounting pad – options AB, BC, CD, DE EF, EG, BB*

**Coupling spline data:**

Pitch diameter = 41.275 [1.625]  
Pressure angle = 30°  
Number of teeth = 13  
Pitch = 8/16  
ANSI B92.1-1970, class 6,  
fillet root side fit  
Length of spline = 25.9 [1.02]

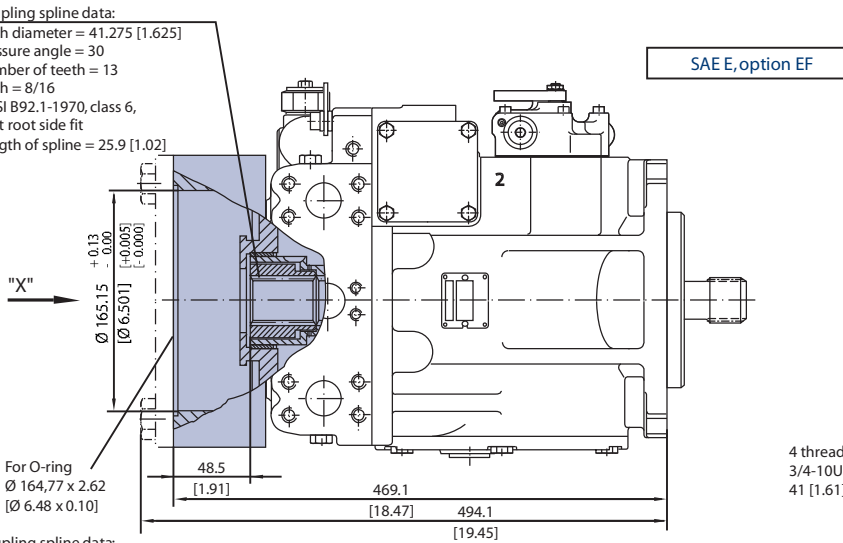


**View "X"**

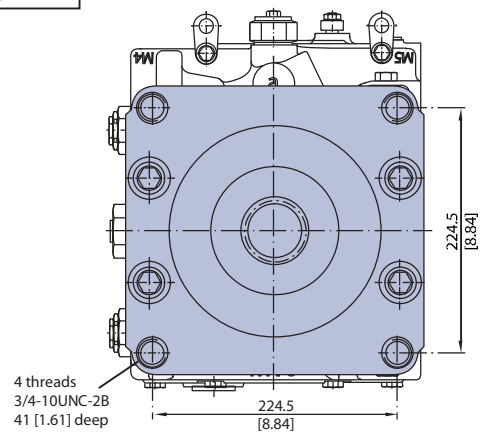


**Coupling spline data:**

Pitch diameter = 41.275 [1.625]  
Pressure angle = 30°  
Number of teeth = 13  
Pitch = 8/16  
ANSI B92.1-1970, class 6,  
fillet root side fit  
Length of spline = 25.9 [1.02]

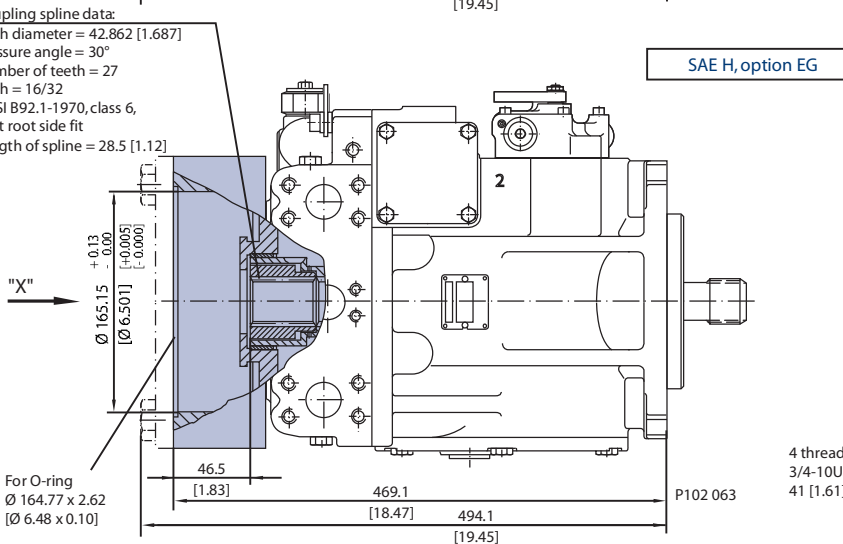


**View "X"**

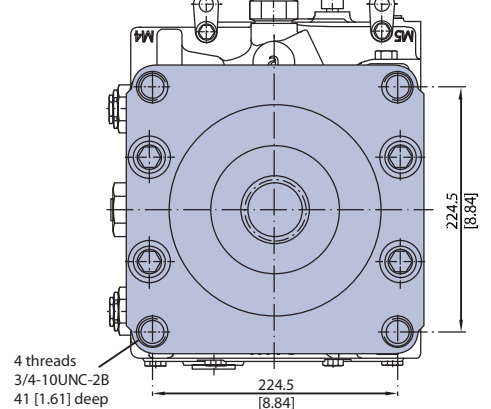


**Coupling spline data:**

Pitch diameter = 42.862 [1.687]  
Pressure angle = 30°  
Number of teeth = 27  
Pitch = 16/32  
ANSI B92.1-1970, class 6,  
fillet root side fit  
Length of spline = 28.5 [1.12]



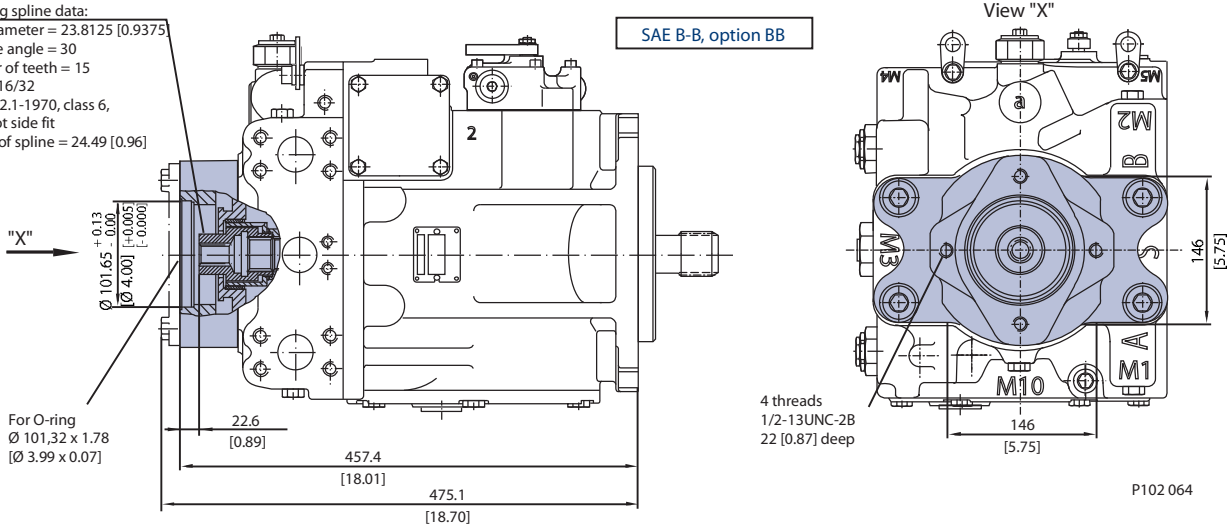
**View "X"**



**FRAME SIZE 250  
(continued)**

*Auxiliary mounting pad – options AB, BC, CD, DE, EF, EG, BB*

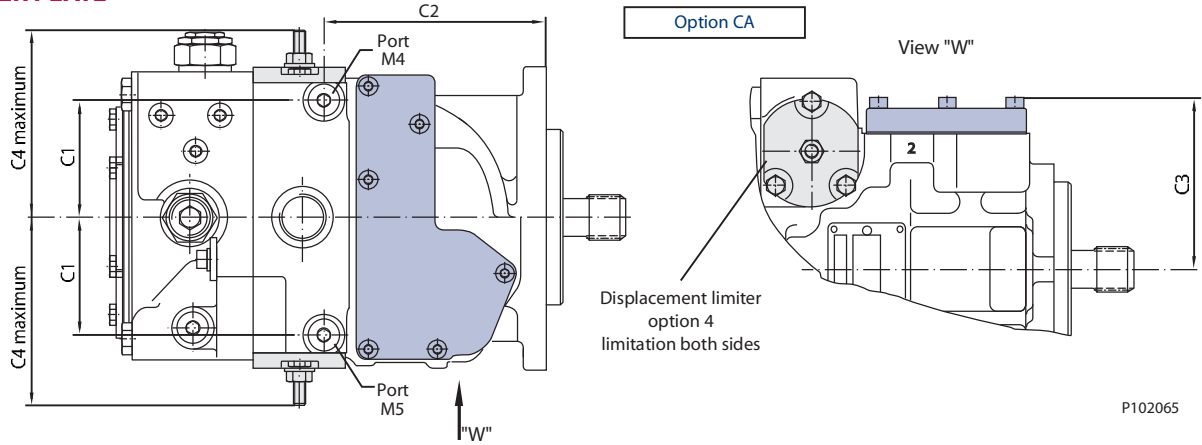
Coupling spline data:  
Pitch diameter = 23.8125 [0.9375]  
Pressure angle = 30  
Number of teeth = 15  
Pitch = 16/32  
ANSI B92.1-1970, class 6,  
fillet root side fit  
Length of spline = 24.49 [0.96]



P102.064

mm [in]

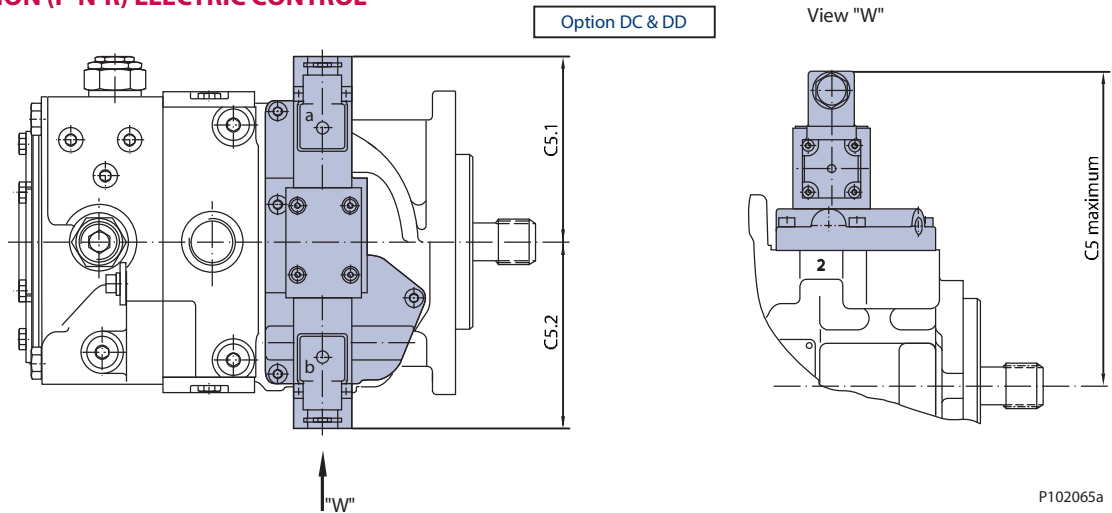
**COVER PLATE**



*Dimensions*

Frame size	C1	C2	C3	C4 maximum (option 4)
042	67.9 [2.67]	129.5 [5.10]	99.5 [3.92]	108 [4.25]
055	69.2 [2.72]	179.4 [7.06]	103.6 [4.08]	114 [4.48]
075	74.2 [2.92]	185.7 [7.31]	109.4 [4.31]	118 [4.65]
100	83.3 [3.28]	183.3 [7.22]	118.3 [4.66]	136 [5.35]
130	86.6 [3.41]	209.3 [8.24]	137.2 [5.40]	141 [5.55]
180	-	-	-	184 [7.24]
250	-	-	-	184 [7.24]

**3-POSITION (F-N-R) ELECTRIC CONTROL**

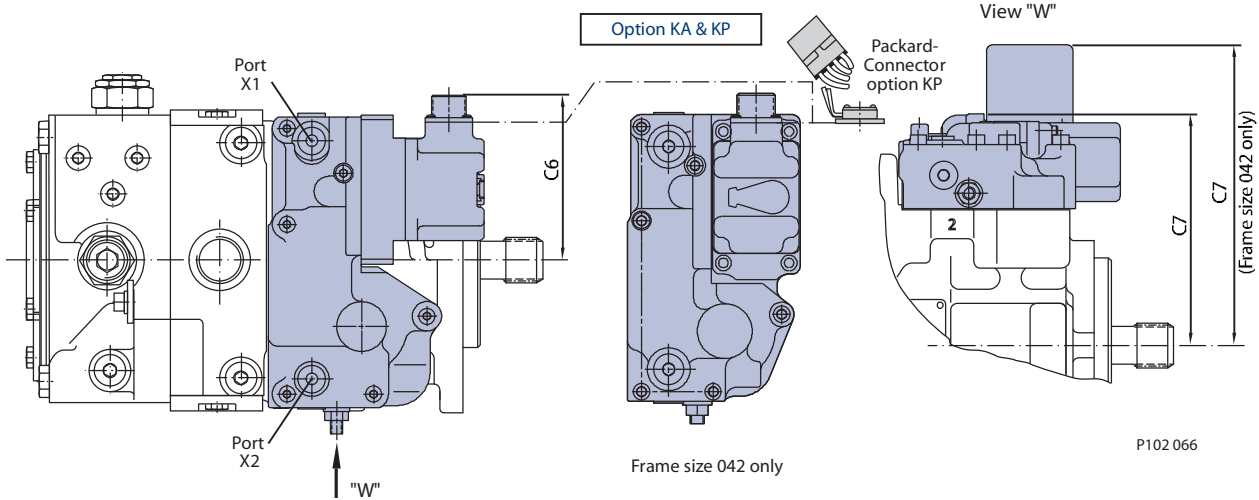


*Dimensions*

Frame size	C5 maximum	C5.1	C5.2
042	196.5 [7.74]	108.8 [4.28]	106.2 [4.18]
055	200.6 [7.90]	108.8 [4.28]	106.2 [4.18]
075	207.9 [8.19]	108.8 [4.28]	106.2 [4.18]
100	216.8 [8.54]	117.4 [4.62]	97.6 [3.84]
130	235.7 [9.28]	102.4 [4.03]	112.6 [4.43]
180	252.4 [9.94]	94.6 [7.32]	120.4 [4.74]
250 [option DD only]	210.4 [8.28]	94.6 [7.32]	120.4 [4.74]

mm [in]

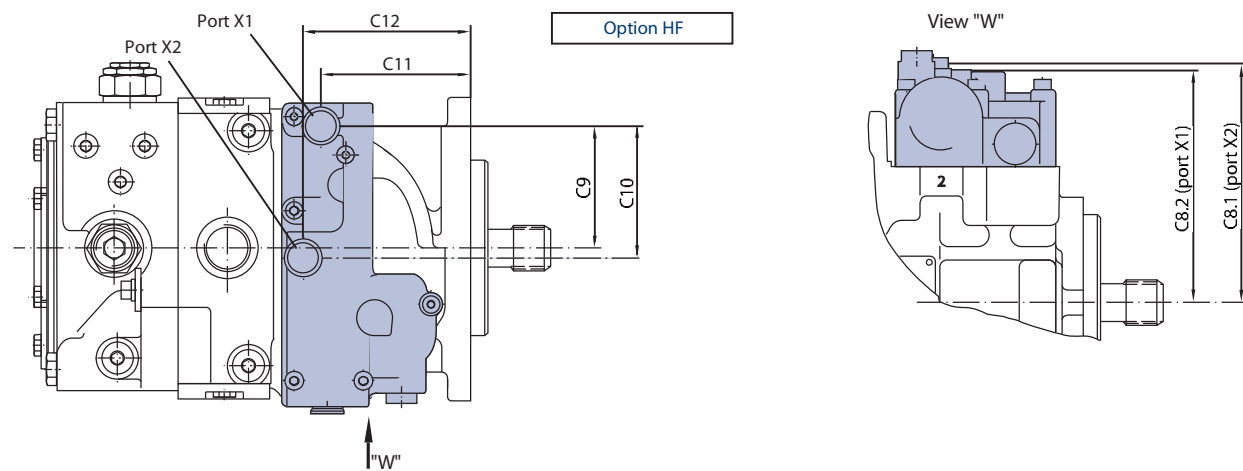
**ELECTRIC DISPLACEMENT CONTROL (EDC) WITH MS-CONNECTOR OR PACKARD® CONNECTOR**



*Dimensions*

Frame size	C6	C7
042	95.3 [3.75]	168.6 [6.64]
055	95.3 [3.75]	141.2 [5.56]
075	105.2 [4.14]	144.8 [5.70]
100	114.0 [4.49]	153.7 [6.05]
130	99.1 [3.90]	172.7 [6.80]
180	93.4 [3.68]	190.0 [7.48]
250	93.4 [3.68]	226.2 [8.91]

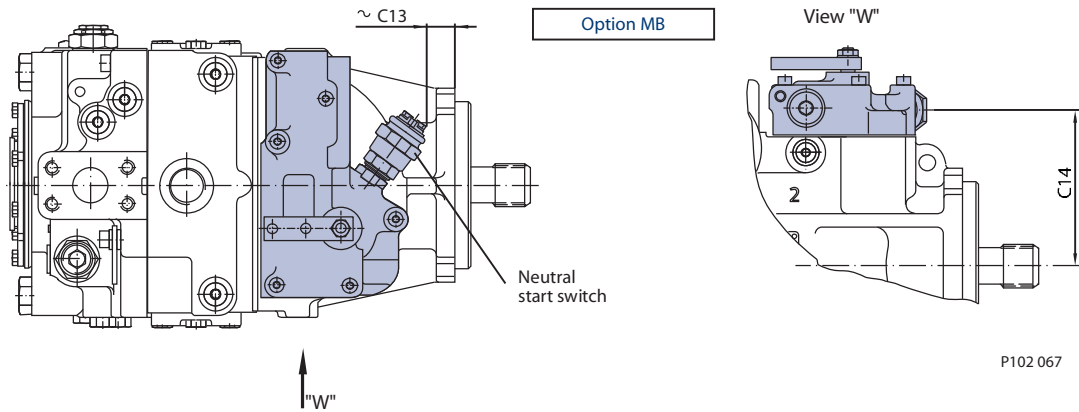
**HYDRAULIC DISPLACEMENT CONTROL (HDC)**



*Dimensions*

Frame size	C8.1	C8.2	C9	C10	C11	C12
042	143.5 [5.65]	135.0 [5.31]	71.0 [2.79]	75.7 [2.98]	89.6 [3.52]	99.2 [3.90]
055	150.8 [5.94]	139.0 [5.47]	71.0 [2.79]	75.7 [2.98]	105.6 [4.15]	115.2 [4.53]
075	148.9 [5.86]	139.0 [5.47]	68.2 [2.68]	67.0 [2.63]	121.8 [4.79]	125.3 [4.93]
100	158.0 [6.22]	149.0 [5.86]	76.8 [3.02]	67.0 [2.63]	127.9 [5.03]	131.4 [5.17]
130	176.7 [6.95]	167.7 [6.60]	61.8 [2.43]	67.0 [2.63]	142.1 [5.59]	145.6 [5.73]
180/250	194.0 [7.63]	185.0 [7.28]	54.0 [2.12]	67.0 [2.63]	148.6 [5.85]	152.1 [5.99]

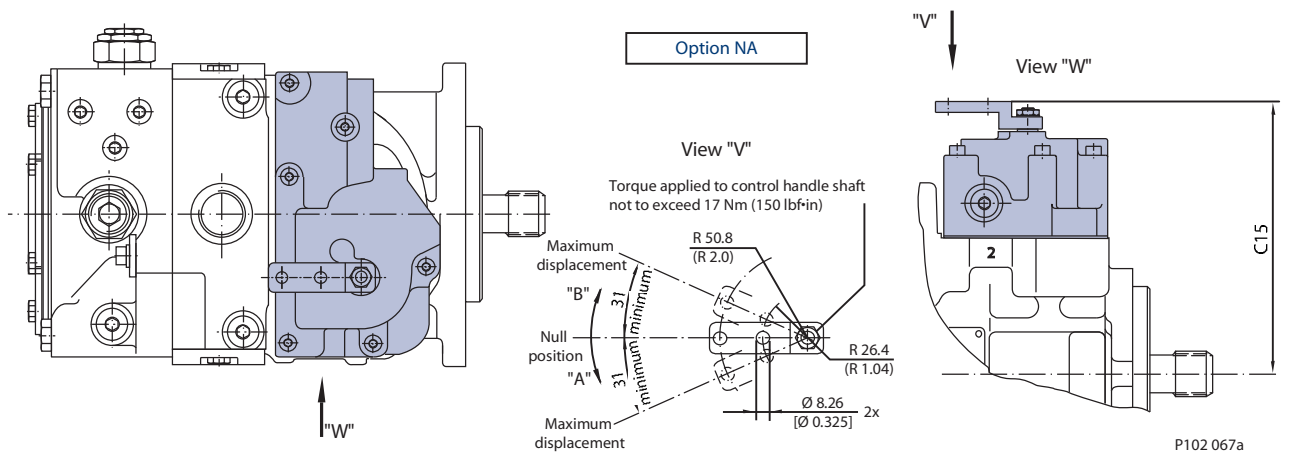
**MANUAL DISPLACEMENT CONTROL (MDC) WITH NEUTRAL START SWITCH**



*Dimensions*

Frame size	C13	C14
042	0.35 [0.014]	96.0 [3.78]
055	18.0 [071]	100.0 [3.94]
075	25.0 [0.98]	106.9 [4.21]
100	31.3 [1.23]	115.8 [4.56]
130	46.0 [1.81]	134.5 [5.29]
180	52.0 [2.04]	151.8 [5.97]
250	52.0 [2.04]	151.8 [5.97]

**NON-LINEAR MANUAL DISPLACEMENT CONTROL (MDC)**

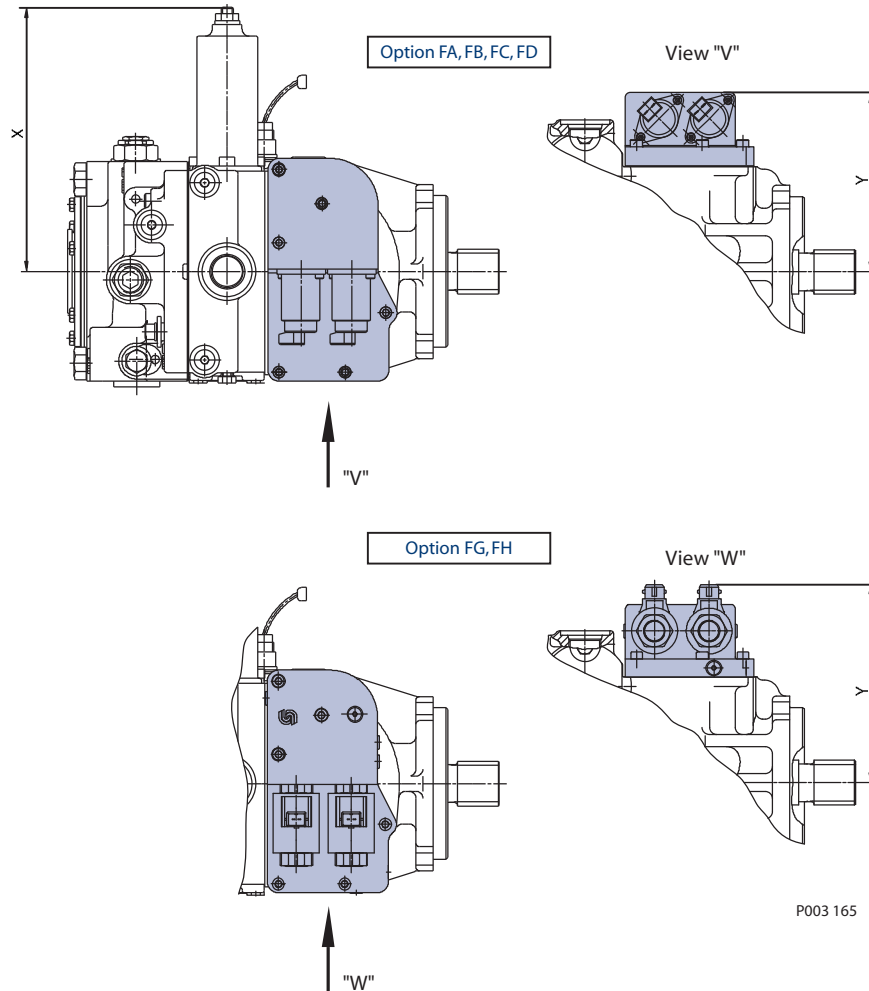


*Dimensions*

Frame size	C15
075	178.9 [7.04]
100	187.8 [7.39]
130	209.4 [8.24]

**ELECTROHYDRAULIC  
 DISPLACEMENT  
 CONTROL (NFPE)  
 (EXCEPT 075 NFPE)**

mm [in]



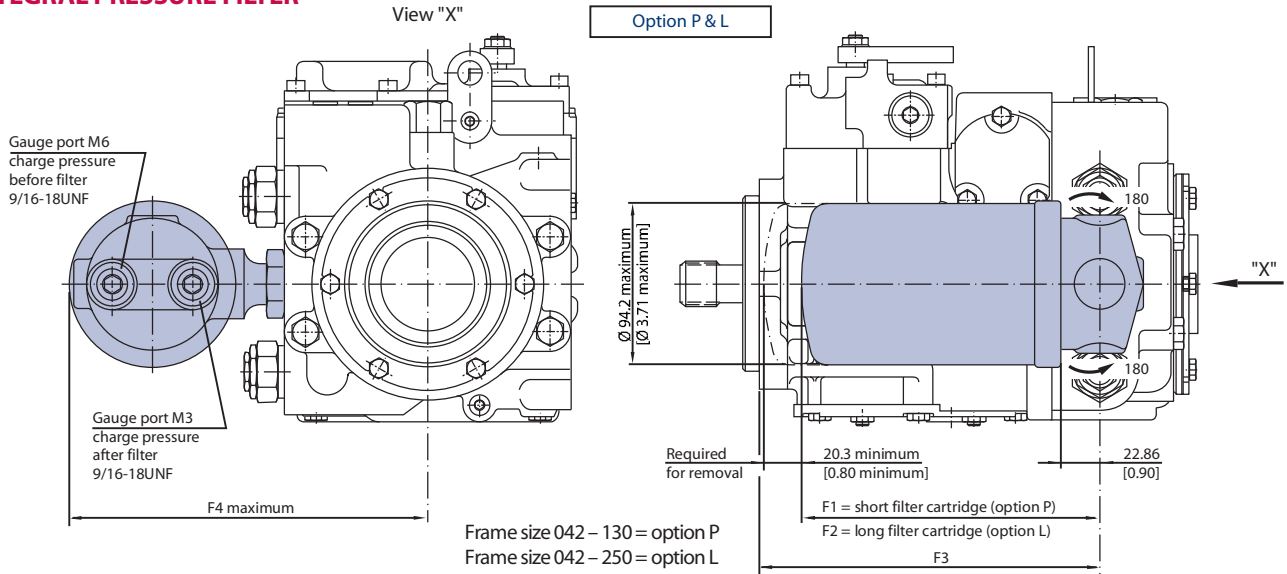
P003 165

*Dimensions*

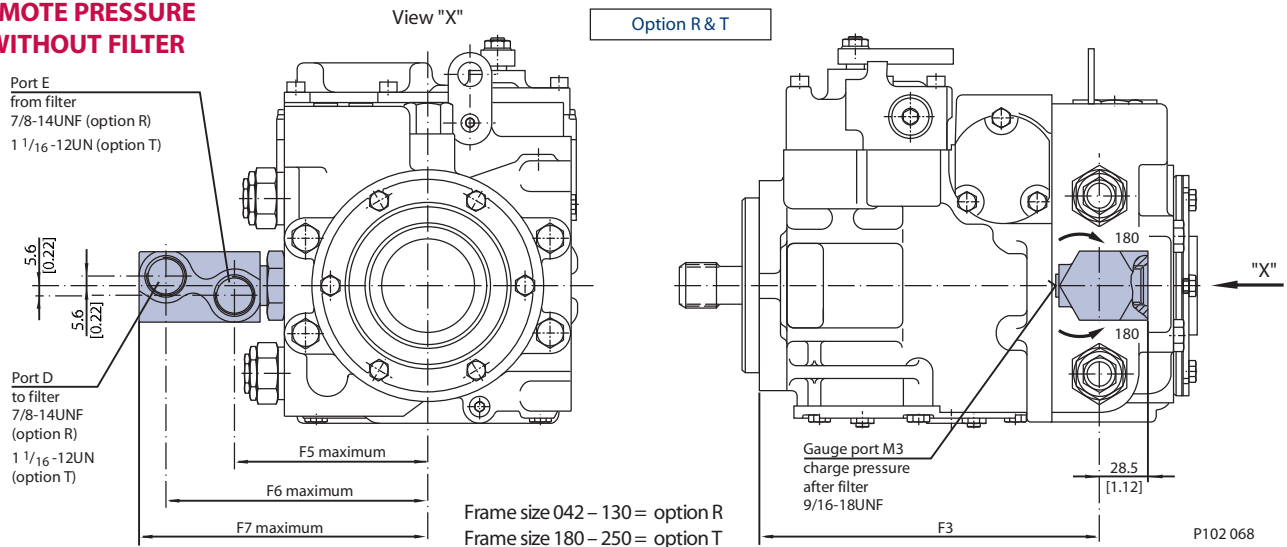
Frame Size	Option	"X"	"Y"
042	FA, FB, FC, FD	169.30 [6.67]	140.00 [5.51]
055	FA, FB, FC, FD	207.00 [8.15]	145.00 [5.71]
075	Special version see page 63		
100	FA, FB, FC, FD	235.00 [9.25]	161.10 [6.34]
100	FG, FH		176.60 [6.95]
130	FG, FH	244.10 [9.61]	195.50 [7.70]
180	FG, FH	290.00 [11.42]	213.00 [8.39]
250	—	—	—

mm [in]

**INTEGRAL PRESSURE FILTER**



**REMOTE PRESSURE  
 – WITHOUT FILTER**



P102 068

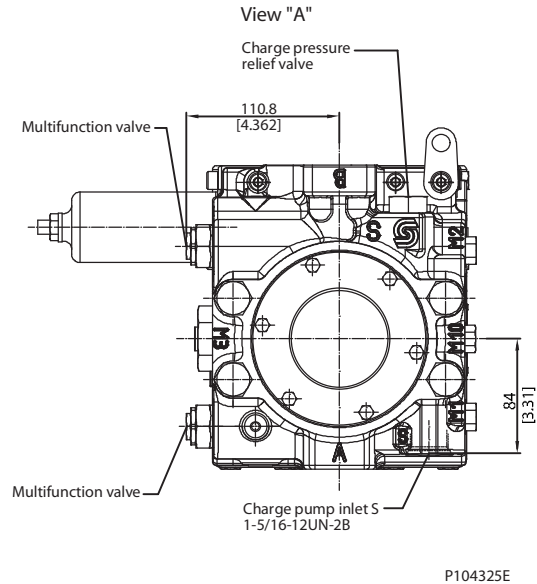
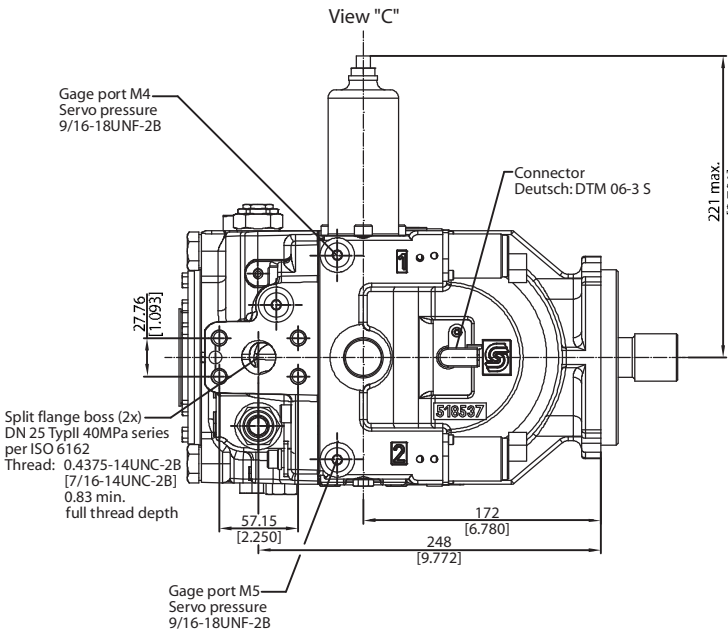
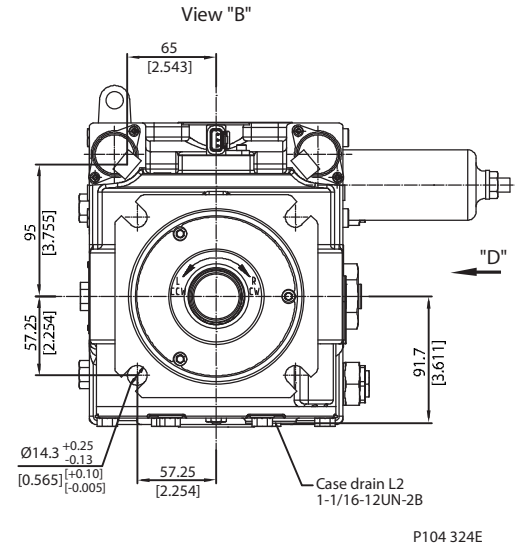
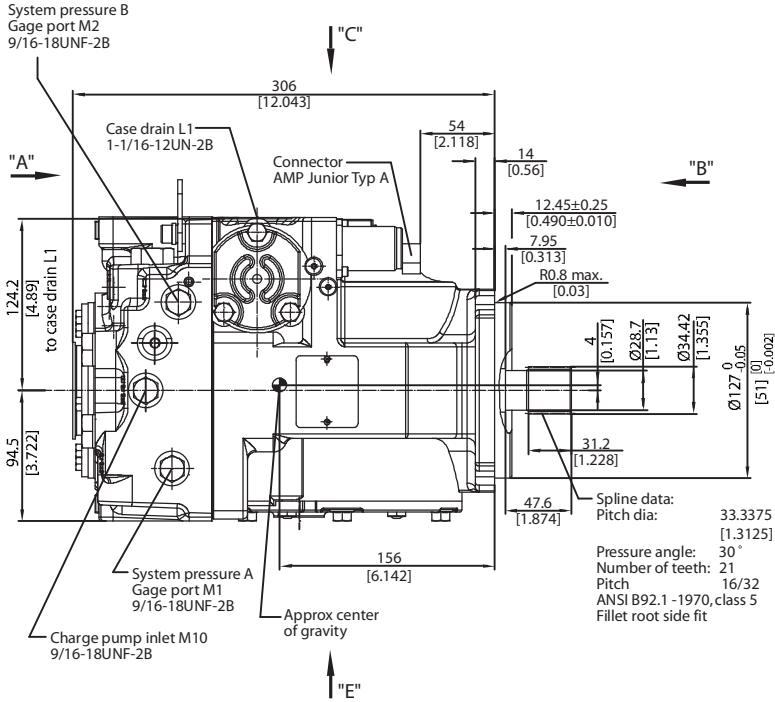
*Dimensions*

Frame size	F1	F2	F3	F4 maximum	F5 maximum	F6 maximum	F7 maximum
042	174.5 [6.87]	262.6 [10.34]	201.4 [7.93]	207.7 [8.12]	112.7 [4.44]	152.7 [6.01]	168.0 [6.61]
055	174.5 [6.87]	262.6 [10.34]	240.9 [8.19]	209.6 [8.25]	114.3 [4.50]	154.3 [6.07]	169.6 [6.68]
075	174.5 [6.87]	262.6 [10.34]	253.2 [9.67]	214.4 [8.44]	119.1 [4.69]	159.1 [6.26]	174.4 [6.86]
075 NFPE	174.5 [6.87]	262.4 [10.34]	253.7 [9.99]	214 [8.441]	119 [4.691]	159 [6.264]	174 [6.866]
100	174.5 [6.87]	262.6 [10.34]	280.7 [11.05]	223.0 [8.78]	127.7 [5.03]	167.7 [6.60]	183.0 [7.20]
130	174.5 [6.87]	262.6 [10.34]	299.9 [11.81]	223.0 [9.17]	137.7 [5.03]	177.7 [6.99]	193.0 [7.60]
180	-	-	327.8 [12.90]	-	182.0 [7.16]	236.8 [9.32]	259.2 [10.2]
250	-	-	342.8 [13.49]	-	182.0 [7.16]	236.8 [9.32]	259.2 [10.2]

mm [in]

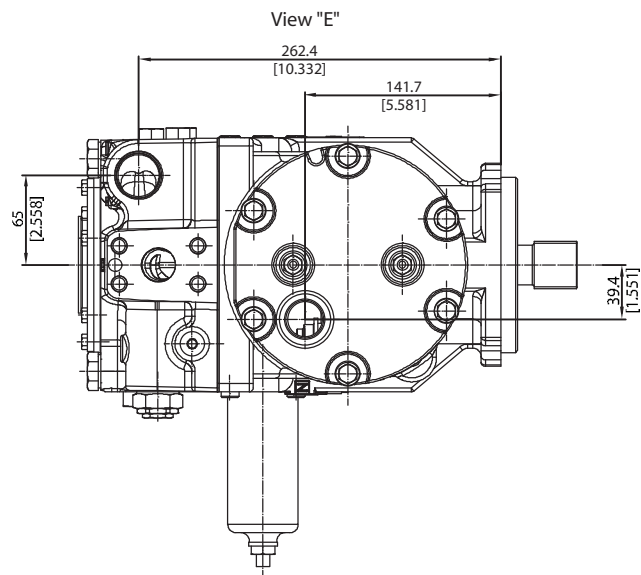
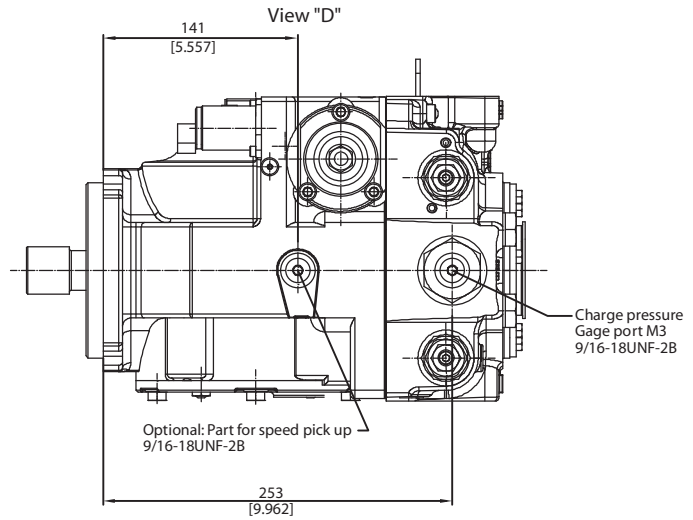
**FRAME SIZE 075 NFPE**

*Integrated NFPE control, endcap side ports*



**FRAME SIZE 075 NFPE  
(continued)**

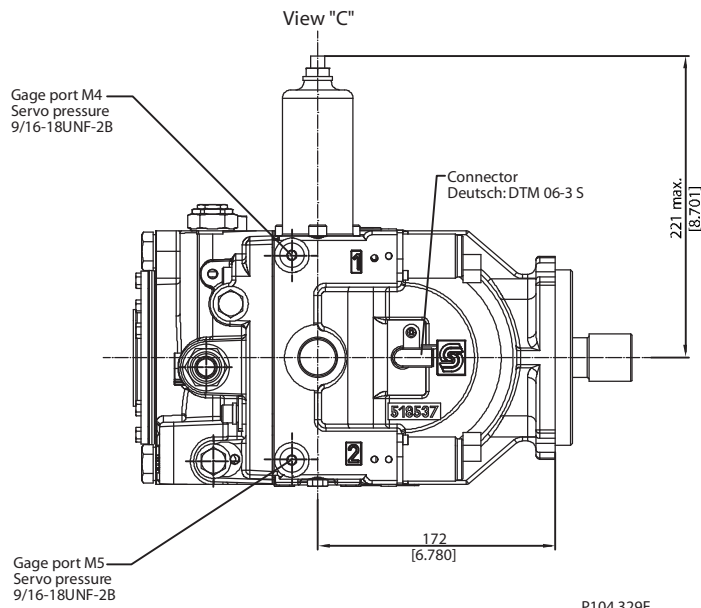
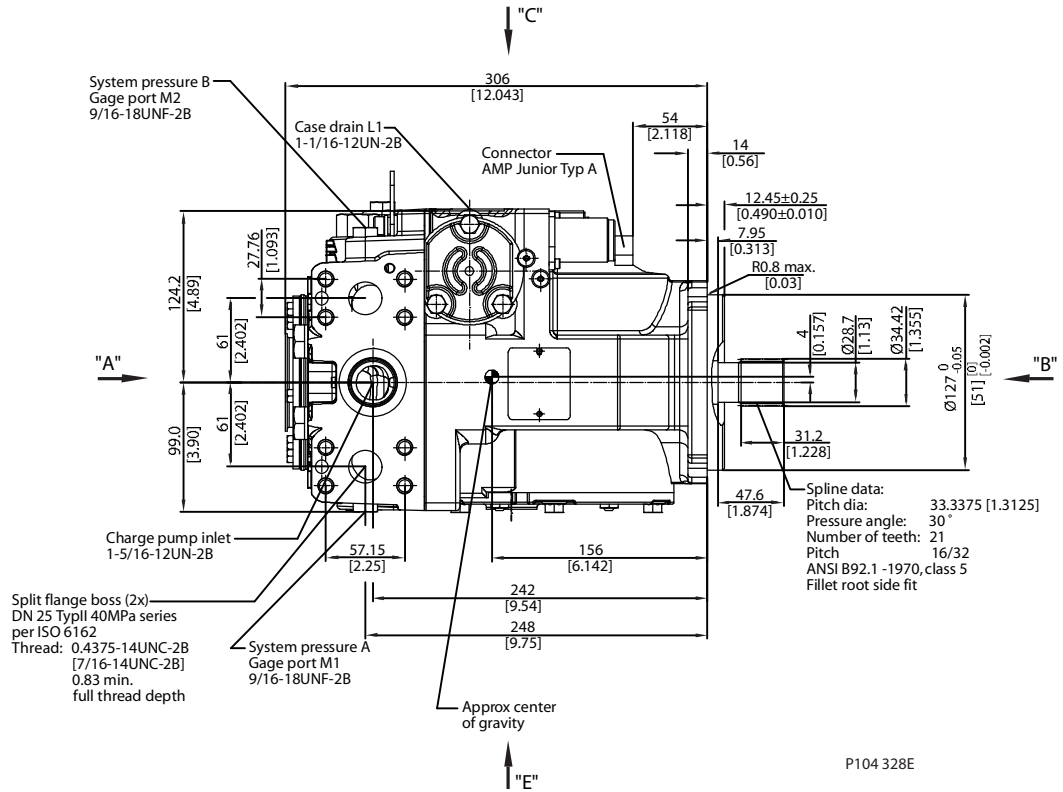
*Integrated NFPE control, endcap side ports (continued)*



mm [in]

**FRAME SIZE 075 NFPE  
(continued)**

*Integrated NFPE control, endcap twin ports*



**FRAME SIZE 075 NFPE**  
**(continued)**

*Auxiliary mounting pad SAE-A*

