

Fixed Displacement Motor 743XX Model Code

2 Bolt SAE "B" Mount

32,9 cm³/r [2.01 in³/r]

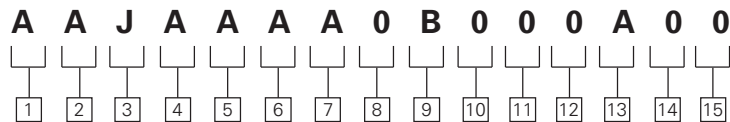
Displacement

40,6 cm³/r [2.48 in³/r]

Displacement

49,2 cm³/r [3.00 in³/r]

Displacement



1 2 3 Code Title

- AAJ** - 40,6 cm³/r [2.48 in³/r]
Fixed displacement piston motor frame size
- AAK** - 49,2 cm³/r [3.0 in³/r]
Fixed displacement piston motor frame size

4 5 Output Shaft

- AA** - 13 Tooth 16/32 spline shaft extension 41,1 [1.62], (std.)
- AB** - 15 Tooth 16/32 spline, shaft extension 46 [1.81], (opt.)
- AD** - Straight Shaft, dia. 28, 58 [1.125], keyway 7,9 [0.31] x 32,5 [1.28], shaft extension 46 [1.81] (key included), (opt.)
- AE** - Straight Shaft, dia. 22,2 [0.875], keyway 6,3 [0.25] x 24, 6 [0.97], shaft extension 41,1 [1.62] (key included), (std.)

6 Main Port, Size, & Location

- A** - 1-1/16-12-12 UN-2B straight thread o-ring ports- opposite sides, (opt.)
- B** - 1-5/16-12 UN-2B straight thread o-ring ports- opposite sides, (std.)
- C** - 1-5/16-12 UN-2B straight thread o-ring ports- rear, (std.)
- D** - 1-5/16-12 UN-2B straight thread o-ring ports- same side, Top, (opt.)
- E** - 1-1/16-12 UN-2B straight thread o-ring ports- rear, (opt.)
- J** - 1-1/16-12 UN-2B straight thread o-ring ports- same side, Top, (opt.)

7 Drain Port, Size, & Location

- A** - 3/4-16 UNF-2B straight thread o-ring port - Top of Housing, (std.)
- B** - 3/4-16 UNF-2B straight thread o-ring port - Top and bottom of Housing, bottom plugged, (opt.)
- G** - 3/4-16 UNF-2B straight thread o-ring port - upper rear of Backplate, (opt.)
- J** - 9/16-18 UNF-2B straight thread o-ring port-upper rear of Backplate, (opt.)

8 Auxiliary Mounting Features (rear)

- 0** - No Auxiliary Mounting Feature (std.)
- 1*** - Straight through shaft, dia. 22,23 [0.875], with keyway 4,75 x 26,9 [0.187 x 1.06] (key included, 19 [0.75] long). Side Mounting Pad holes both sides, 4 x .3125-18.
Note: Requires the selection in position 6 of same side porting. (opt.)

9 Displacement Options

- 0** - As given in code title, 40,6 cm³/r [2.48 in³/r] - Model 74318 or 74348, (std.)
- A** - 32,9 cm³/r [2.01 in³/r] destroked from 40,6 cm³/r [2.48 in³/r] - Model 74315, (opt.)
- B** - 24 cm³/r [1.50 in³/r] destroked from 40, 6 cm³/r [2.48], (opt.)

10 11 Special Features

- 00** - No special feature, (std.)
- AD** - Shuttle Valve and Charge Pressure Valve set at 15-17 bar [220-250 lbf/in²], (opt.)
- AM** - Shuttle Valve and Charge Pressure Valve set at 10-12 bar [150-175 lbf/in²], (opt.)
- AP** - Speed Sensor Hall Effect Pickup (9 pulse), lead wire 127mm [5.0in] long, (opt.)
- CA** - Speed Sensor, Hall Effect Pickup (9 pulse) with M12 connector (opt.)

12 13 Paint

- 0A** - Primer, (std.)
- 0B** - Black Paint, (std.)

14 Identification

- 0** - Standard, (std.)

15 Design Code

- 0** - Eaton assigns current design code, (std.)

Fixed displacement piston motors are specified by the following model code. Once a motor is built from the model code, a product number will be assigned to that configuration. Make sure all positions are selected within the 15 digit code for each motor.

Model 74315, 74318 and 74328

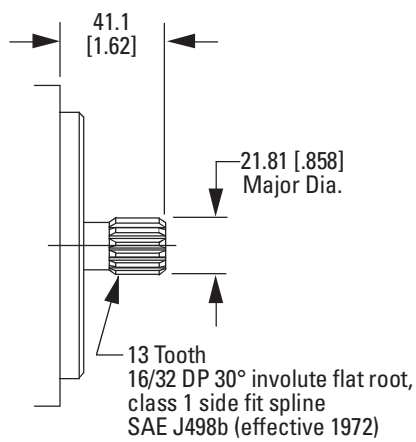
Installation Drawings

Output Shafts - Used for all 743XX Models

(Code position 4,5)

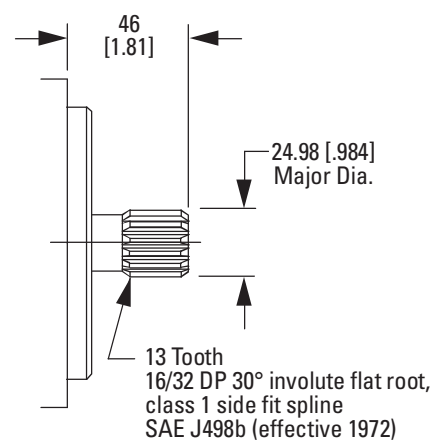
Spline Shaft Code Selection AA

Maximum Torque on Shaft
209,3 N•m [1,852 lbf•in]



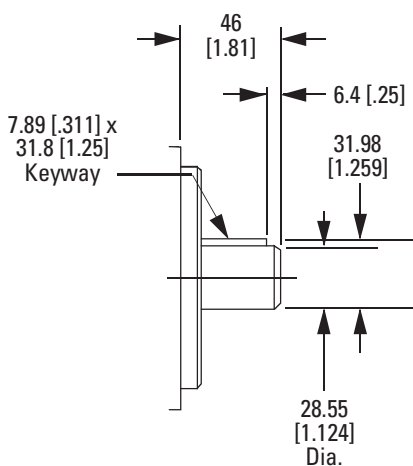
Spline Shaft Code Selection AB

Maximum Torque on Shaft
337,5 N•m [2,987 lbf•in]



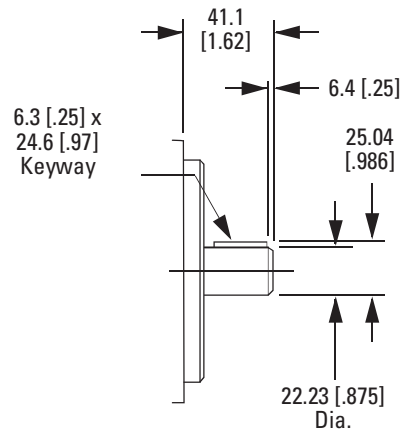
Spline Shaft Code Selection AD

Maximum Torque on Shaft
337,5 N•m [2,987 lbf•in]



Spline Shaft Code Selection AE

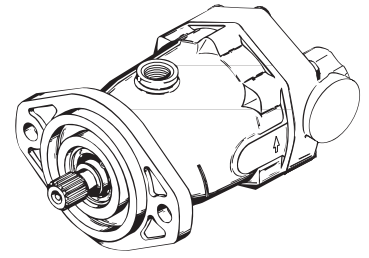
Maximum Torque on Shaft
209,3 N•m [1,852 lbf•in]



Note: All ports are SAE (J1926) o-ring ports. Dimensions are in millimeters [inches], unless otherwise specified.

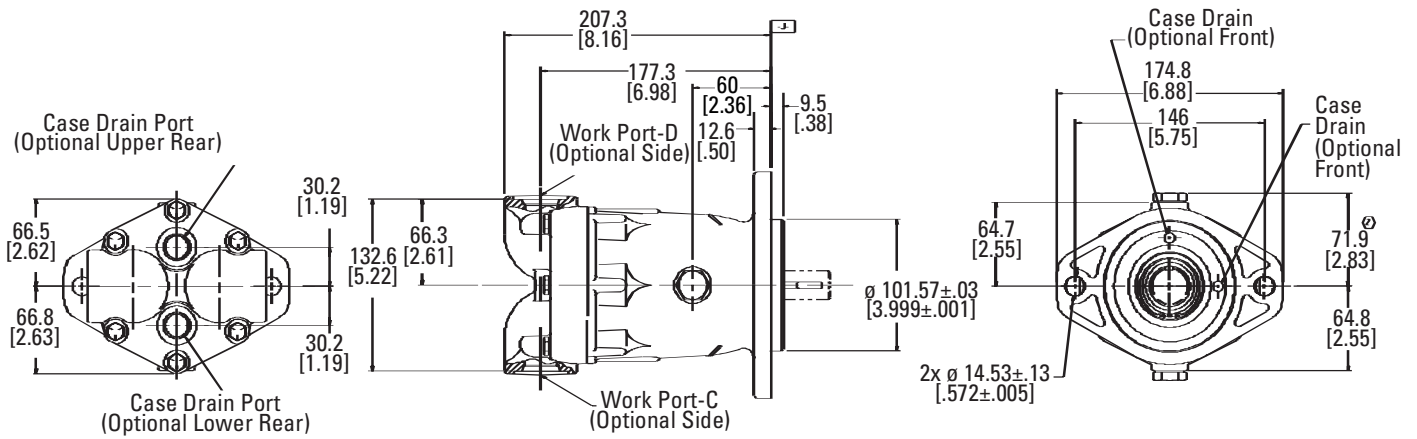
Model 74315, 74318 and 74328

Installation Drawings



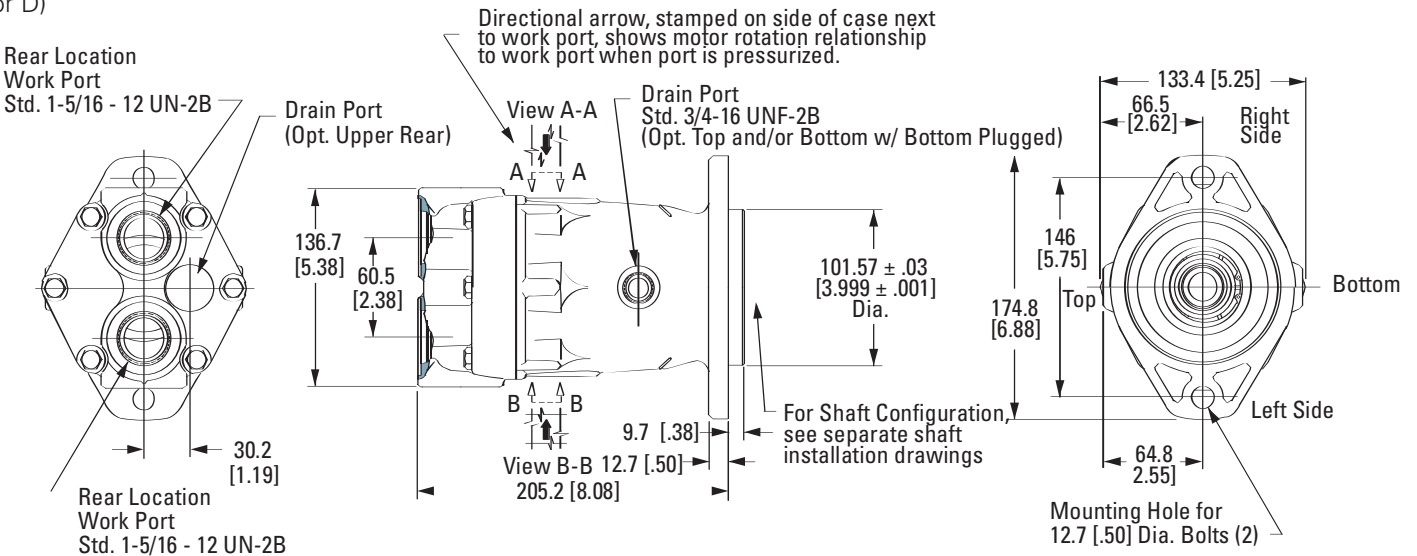
Opposite Side Porting

(Code position 6, selection A or B)



Rear Porting

(Code position 6, selection C or D)



Note: All ports are SAE (J1926) o-ring ports. Dimensions are in millimeters [inches], unless otherwise specified.

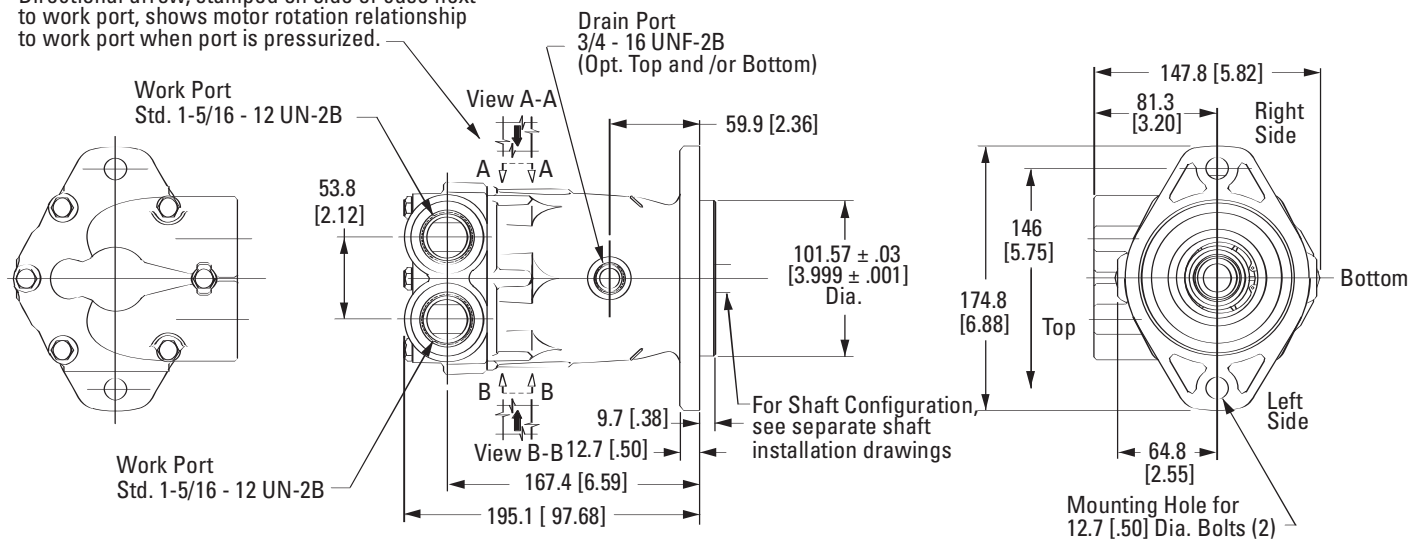
Model 74315, 74318 and 74328

Installation Drawings

Same Side Porting

(Code position 6, selection D)

Directional arrow, stamped on side of case next to work port, shows motor rotation relationship to work port when port is pressurized.



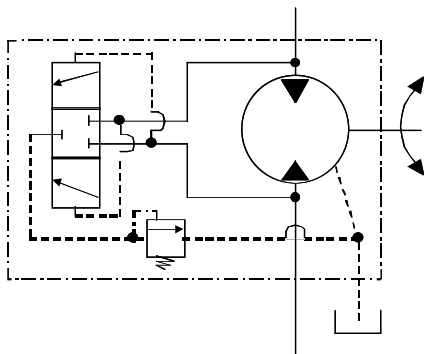
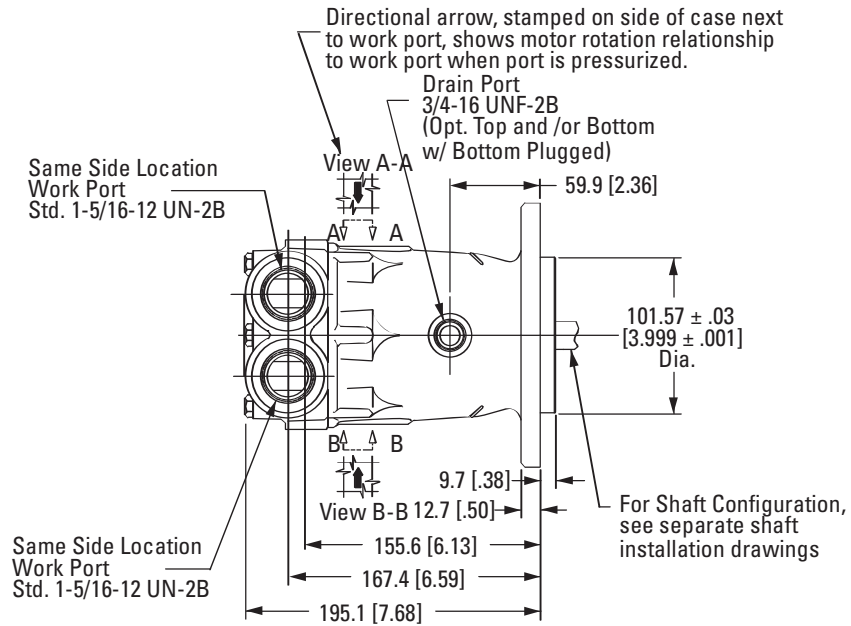
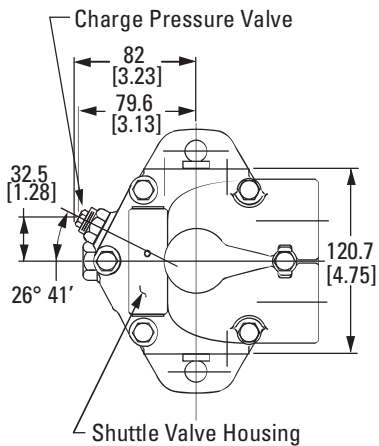
Note: All ports are SAE (J1926) o-ring ports. Dimensions are in millimeters [inches], unless otherwise specified.

Model 74315, 74318 and 74328

Installation Drawings

Same Side Porting w/ Shuttle Valve and Charge Pressure Valve

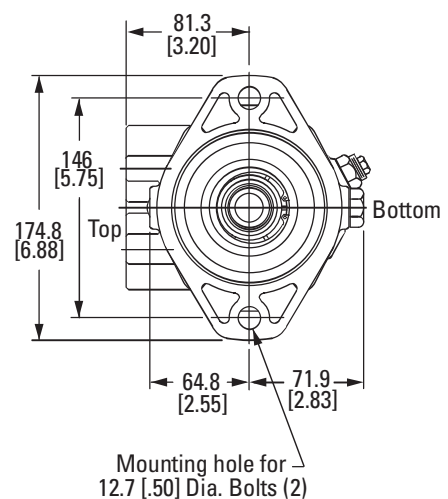
(Code position 10, 11 selection AD or AM)



The shuttle and charge pressure valve work together to bypass closed loop oil. This allows the oil to be cooled, filtered, and returned to tank.

The shuttle valve flow is listed below in relationship to the charge pressure valve setting.

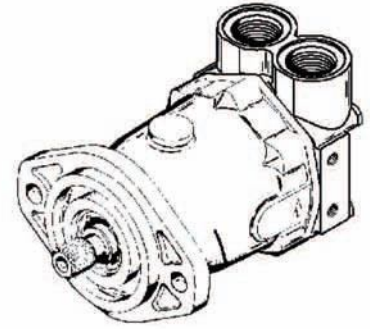
CHARGE PRESSURE	FLOW	CODE SELECTION
10 to 12 bar [145 to 175 lbf/in ²]	5,68 to 9,46 l/m [1.5 to 2.5 gal/min]	AM
15 to 17 bar [220 to 250 lbf/in ²]	9,46 to 13,25 l/m [2.5 to 3.5 gal/min]	AD



Note: All ports are SAE (J1926) o-ring ports. Dimensions are in millimeters [inches], unless otherwise specified.

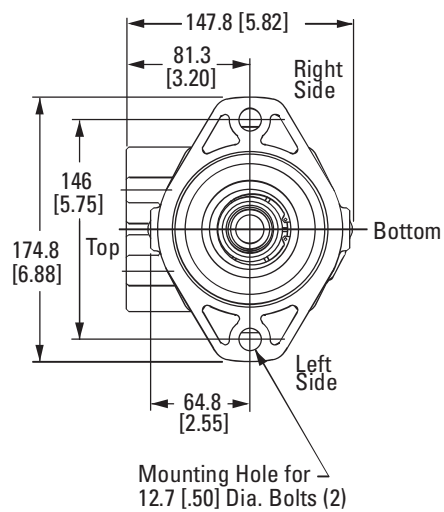
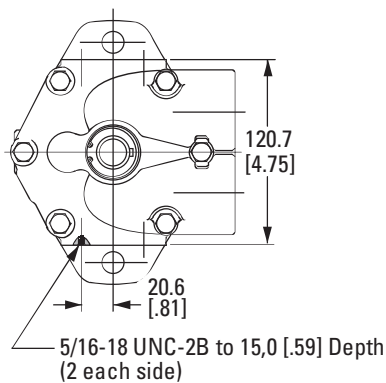
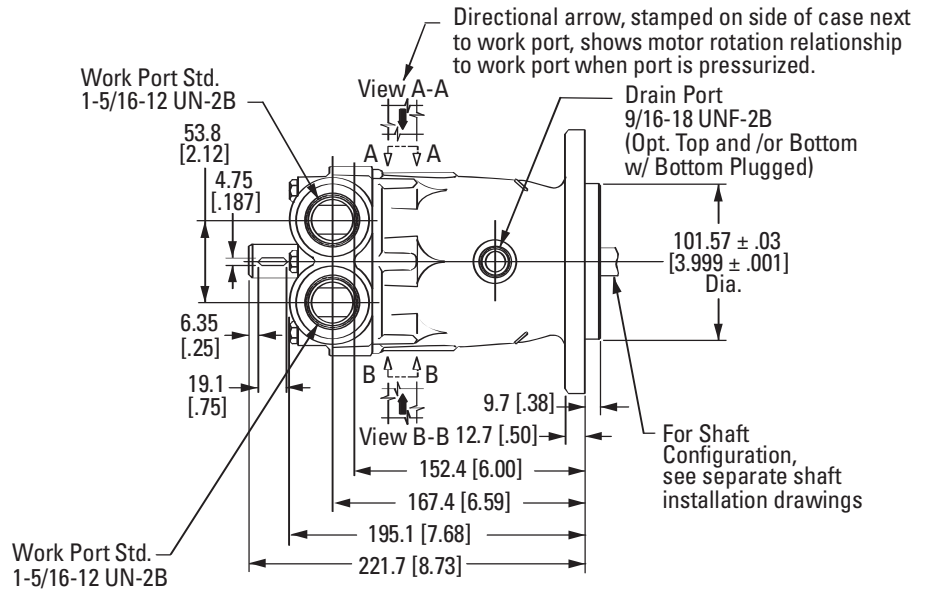
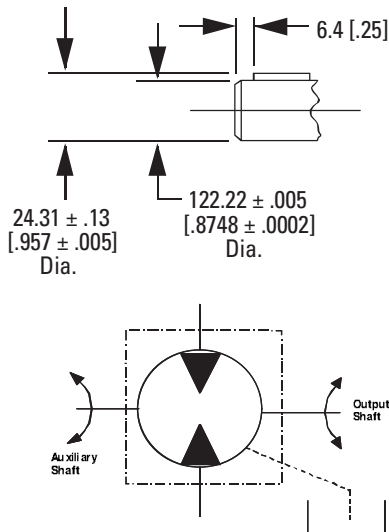
Model 74348

Installation Drawings



Same Side Porting w/ Through shaft for brake mounting

(Code position 6, selection D)
(Code position 8, selection 3)



Note: All ports are SAE (J1926) o-ring ports. Dimensions are in millimeters [inches], unless otherwise specified.