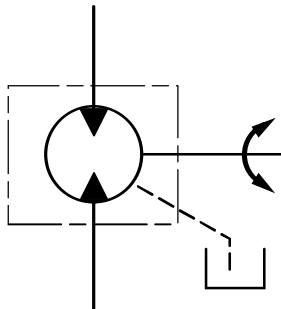


Fixed Displacement Motor - 741XX Models

2 Bolt SAE "A" Mount

12,3 cm³/r [.75 in³/r] Displacement

20,3 cm³/r [1.24 in³/r] Displacement



Specification	Model 74111 / 74149	Model 74118 / 74148
Maximum Displacement	12,3 cm ³ /r [.75 in ³ /r]	20,3 cm ³ /r [1.24 in ³ /r]
Maximum Rated Speed	4500 RPM	3600 RPM
Continuous Rated Pressure †	210 bar [3000 lbf/in ²]	210 bar [3000 lbf/in ²]
Maximum Rated Pressure ††	345 bar [5000 lbf/in ²]	345 bar [5000 lbf/in ²]
Maximum Intermittent Pressure †††	370 bar [5400 lbf/in ²]	370 bar [5400 lbf/in ²]
Input Flow at Rated Speed and Pressure	64 l/min [16.9 GPM]	79 l/min [20.8 GPM]
Output Power at Rated Speed and Pressure	13,8 kW [18.5 hp]	23,2 kW [31.1 hp]
Output Torque at Rated Speed and Pressure	29 N•m [260 lbf•in]	62 N•m [550 lbf•in]
Continuous Allowable Case Pressure	1,7 bar [25 lbf/in ²]	1,7 bar [25 lbf/in ²]
Continuous Inlet Temperature	107° C [225° F]	107° C [225° F]
Weight/Single Motor (approximate)	4,9 kg [11 lbs]	4,9 kg [11 lbs]

† Continuous Rated Pressure — Motor may run uninterrupted at this pressure.

†† Maximum Rated Pressure — Highest allowable system pressure. (High pressure relief valve setting)

††† Maximum Intermittent Pressure — A pressure spike only for a short period of time, not continuous.

Fixed Displacement Motor - 741XX Model Code

12,3 cm³/r [.75 in³/r] Displacement

20,3 cm³/r [1.24 in³/r] Displacement

Fixed displacement piston motors are specified by the following model code. Once a motor is built from the model code, a product number will be assigned to that configuration. Make sure all positions are selected within the 15 digit code for each motor.

Code Example:

AAV	A	A	A	A	0	B	0	0	0	A	0	0	
Position -	1, 2, 3,	4,	5,	6,	7,	8,	9,	10,	11,	12,	13,	14,	15
	<input type="text"/>	<input type="text"/>	<input type="text"/>	<input type="text"/>	<input type="text"/>	<input type="text"/>	<input type="text"/>	<input type="text"/>	<input type="text"/>	<input type="text"/>	<input type="text"/>	<input type="text"/>	<input type="text"/>

Position 1, 2, 3 - Code Title

AAV = 20,3 cm³/r [1.24 in³/r] Fixed displacement piston motor frame size.

Position 4, 5 - Output Shaft (details on page 9)

AA = 13 Tooth 16/32 spline with snap ring groove, min. full spline 22,1 [.87], shaft extension 41,1 [1.62]
AE = Straight Shaft, dia. 22,2 [.875], keyway 6,35 [.25] x 25,6 [.97], shaft extension 41,1 [1.62] (key included)

Code	AAV
AA	Std.
AE	Std.

Position 6 - Main Port, Size and Location

A = 1-1/16-12 UN-2B straight threaded o-ring ports - opposite sides
B = 1-1/16-12 UN-2B straight threaded o-ring ports - rear
C = 1-1/16-12 UN-2B straight threaded o-ring ports - same side, only with through shaft

A	Std.
B	Std.
C	Opt.

Position 7 - Drain Port, Size and Location

A = 9/16-18 UNF-2B straight thread o-ring port - upper rear
B = 9/16-18 UNF-2B straight thread o-ring port - lower rear
C = 9/16-18 UNF-2B straight thread o-ring port - bottom rear, with through shaft only (pos. 8,selection 1)

A	Std.
B	Std.
C	Opt.

Position 8 - Auxiliary Mounting Features (rear)

0 = No Auxiliary Mounting Feature
1* = Straight through shaft, dia. 19 [.75], with keyway 4,8 x 31 [.189 x 1.22]. 209,3 [8.42] from mounting flange (Key included), 5/16 -18 UNC-2B mounting holes 14,2 [.56] deep min. full thread.

0	Std.
1*	Opt.

Position 9 - Displacement Options

0 = As given in code title. - Model 74118 or 74148
B = 12,3 cm³/r [.75 in³/r] destroked from 20,3 cm³/r [1.24 in³/r] - Model 74111 or 74149

0	Std.
B	Std.

Position 10, 11 - Special Features

00 = No Special Feature

00	Std.
-----------	------

Position 12, 13 - Paint

0A = Primer

0A	Std.
-----------	------

Position 14 - Identification

0 = Standard

0	Std.
----------	------

Position 15 - Design Code

0 = Eaton assigns current design code

0	Std.
----------	------

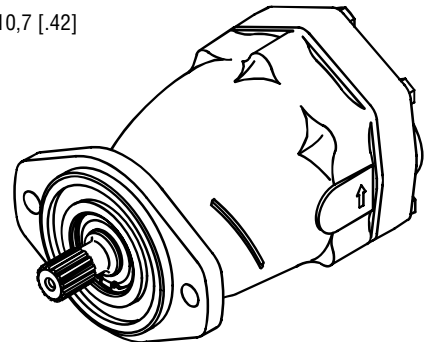
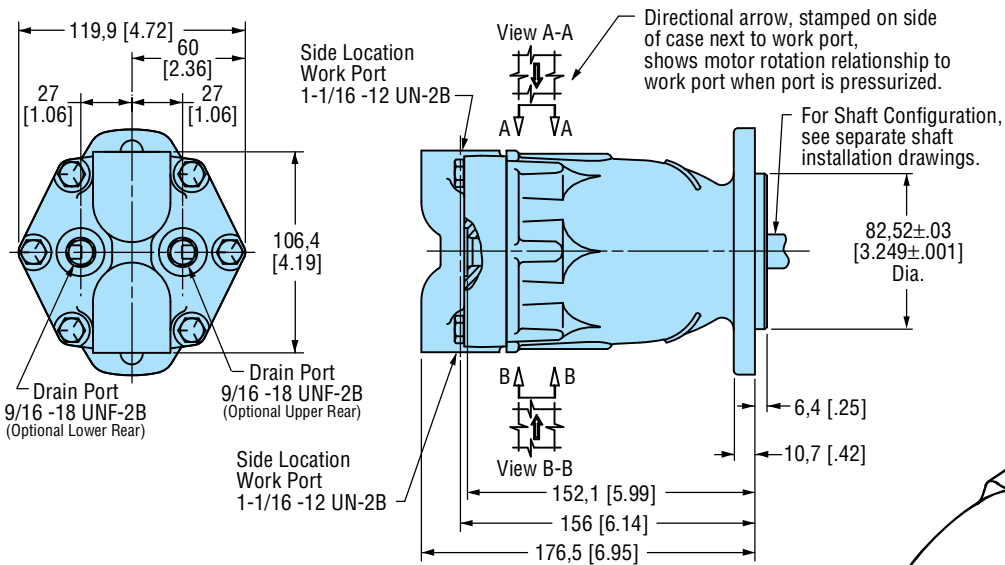
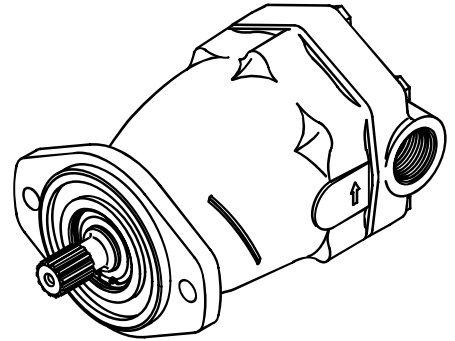
* Requires the selection of same-side porting only.
 Through shaft motor at displacement 1.24 in³/r will carry model number 74148.

Note: All ports are SAE (J1926) o-ring ports.

Model 74111 and 74118 Installation Drawings

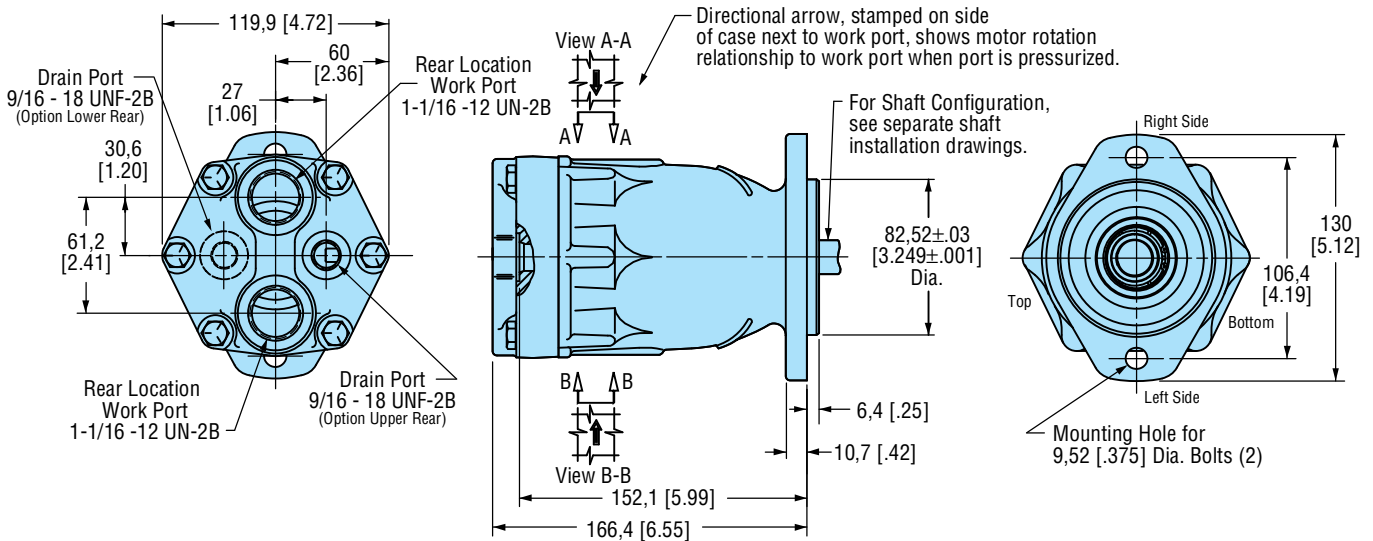
Opposite Side Porting

(Code position 6, selection A)



Rear Porting

(Code position 6, selection B)

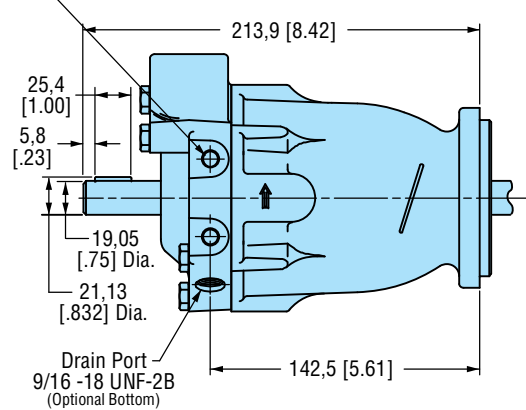
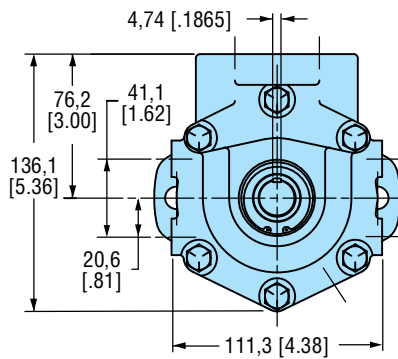
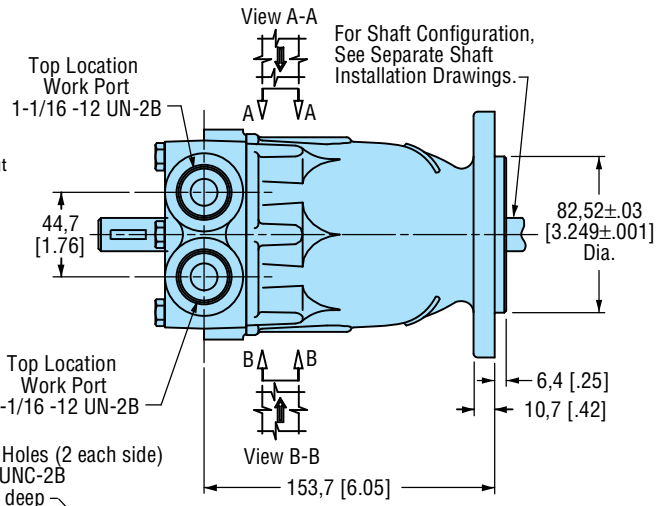
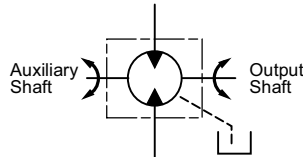
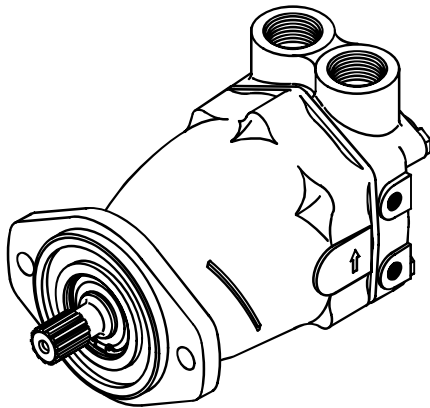


Note: All ports are SAE (J1926) o-ring ports. Dimensions are in millimeters [inches], unless otherwise specified.

Model 74148 and 74149 Installation Drawings

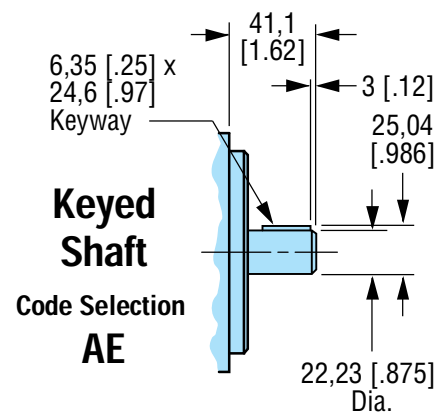
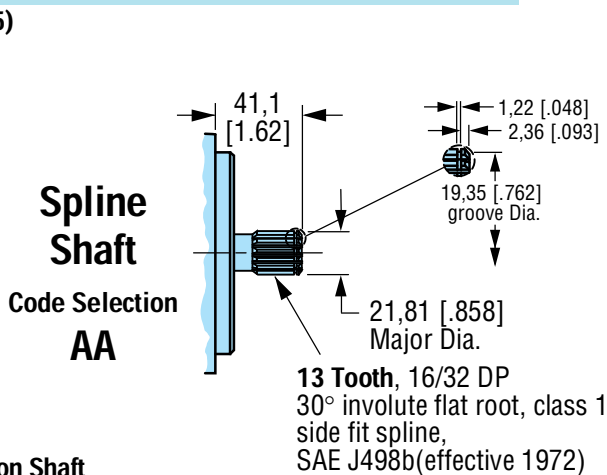
Through Shaft and Same Side Porting

(Code position 6, selection C)



Output Shafts - Used for all 741XX Models

(Code position 4, 5)



Maximum Torque on Shaft

Shaft **AA** - 209,3 N·m [1,852 lbf·in]

Shaft **AE** - 209,3 N·m [1,852 lbf·in]