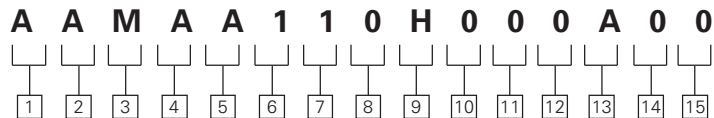


Fixed Displacement Motor 71392 Models

40,6 cm³/r [2.48 in³/r]
Displacement



1 2 3 Code Title

AAM- 40, 6 cm³/r [2.48 in³/r]
Variable displacement
piston motor frame size

4 Control Options

- F** - Hydraulic De-stroke
Control, Remote Port
Down - Model 71392,
(opt.)
- G** - Hydraulic De-stroke
Control, Remote Port
Up - Model 71392, (opt.)

5 Output Shaft

- A** - 13 Tooth 16/32 spline,
shaft extension 41,1
[1.62], (std.)
- B** - 13 Tooth 16/32 spline,
with snap ring groove,
shaft extension 41,1
[1.62], (opt.)

6 Main Port, Size, & Location

- 1** - 1 1/16-12 UN-2B
straight thread o-ring
ports - Rear, (std.)
- 2** - 1 1/16-12 UN-2B
straight thread o-ring
ports - Opposite Sides,
(std.)

7 Drain Port, Size, & Location

- 1** - 9/16-18 UNF-2B straight
thread o-ring port -
Right Side, (std.)
- 3** - 9/16-18 UNF-2B straight
thread o-ring port - Rear
of Backplate, (opt.)
- 4** - 9/16-18 UNF-2B straight
thread o-ring port -
Right Side and Left
Side, (opt.)
- 6** - 9/16-18 UNF-2B straight
thread o-ring port - Top,
(opt.)

8 Auxiliary Mounting Features (rear)

- 0** - No Auxiliary Mounting
Feature, (std.)
- 1*** - 13 Tooth 16/32 Ext.
Tapered spline with
tapped hole, bottom
pad with 5/16-18 UNC-
2B mounting holes,
(opt.)

9 Min-Max Displacements & Control Angles

- C** - 12,3 to 40,6 cm³/r [1.70
to 2.48 in³/r], 5o 17'
maximum - 9o 0' mini-
mum control angle,
(std.)
- D** - 17,9 to 40,6 cm³/r [1.09
to 2.78 in³/r], 7o 40'
maximum - 9o 0' mini-
mum control angle,
(std.)
- H** - 21,0 to 40,6 cm³/r [1.28
to 2.48 in³/r], 17o 0'
maximum - 9o 0' mini-
mum control angle,
(std.)
- M** - 27,9 to 40,6 cm³/r [1.7
to 2.48 in³/r], 11o 50'
maximum - 9o 0' mini-
mum control angle,
(std.)

10 11 Special Features

00 - No special feature,
(std.)

12 13 Paint

0A - Primer, (std.)
0B - Black Paint, (std.)

14 Identification

0 - Standard, (std.)

15 Design Code

0 - Eaton assigns current
design code, (std.)

** Requires the selection of opposite side
porting only.*

*Note: All ports are SAE (J1926) o-ring
ports.*

Variable displacement piston motors are specified by the following model code. Once a motor is built from the model code, a product number will be assigned to that configuration. Make sure all positions are selected within the 15 digit code for each motor.

Model 71392

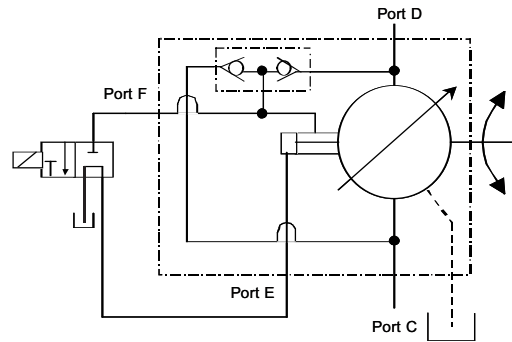
Installation Drawings

Hydraulic De-stroke Control

(Code position 4, selection F or G)

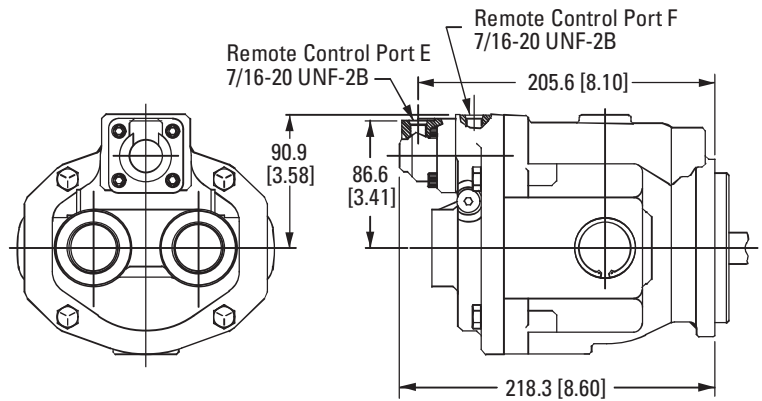
The Hydraulic De-stroke Control feature allows the operator to control the motor without any mechanical linkage to the motor.

A normally closed valve is required to provide maximum displacement to the motor. The valves must be rated for maximum system pressure.



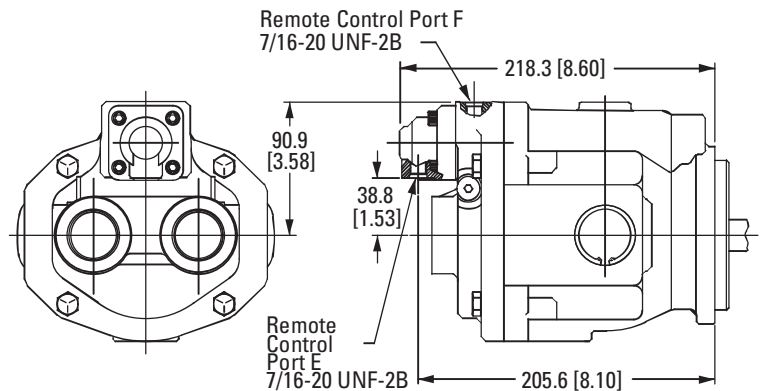
Control Port up

(Code position 4, Selection G)



Control Port Down

(Code position 4, Selection F)



Note: All ports are SAE (J1926) o-ring ports. Dimensions are in millimeters [inches], unless otherwise specified.