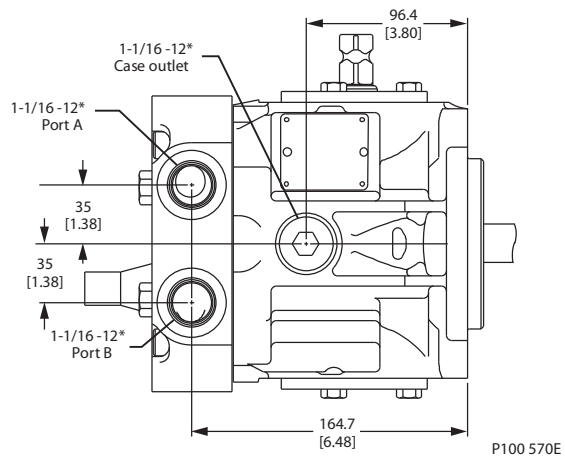
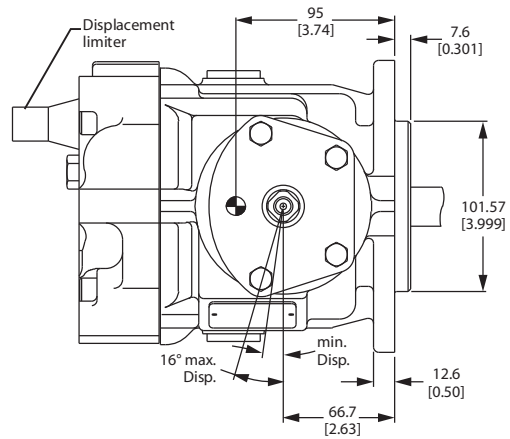
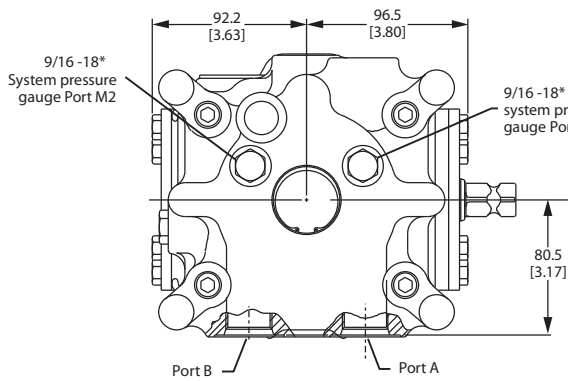


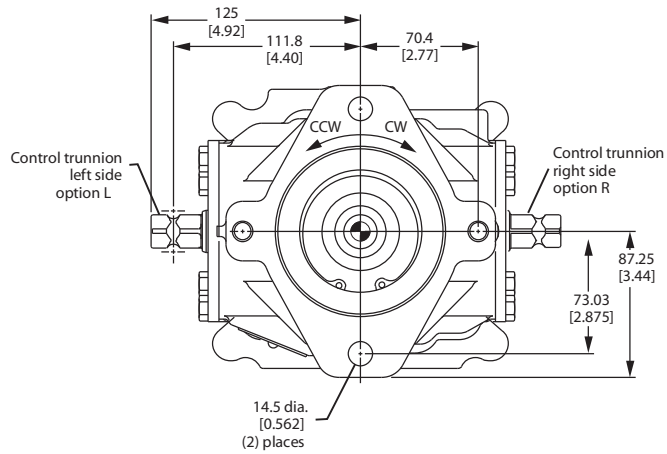
M35/M44 MV: TWIN PORTS



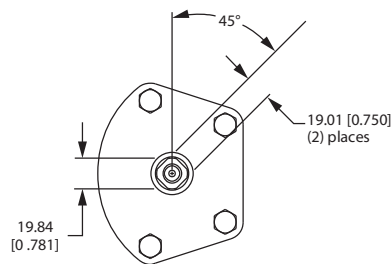
*All ports are SAE straight thread o-ring ports per SAE J514, unless otherwise specified.
 Shaft rotation is determined by viewing pump from input shaft end.
 Contact SAUER-DANFOSS Application Engineering for specific installation drawings.

Dimensions in mm [in]

**M35/M44 MV:
 MOUNTING FLANGE,
 TRUNNION CONTROL**



Trunnion control



P100 571E

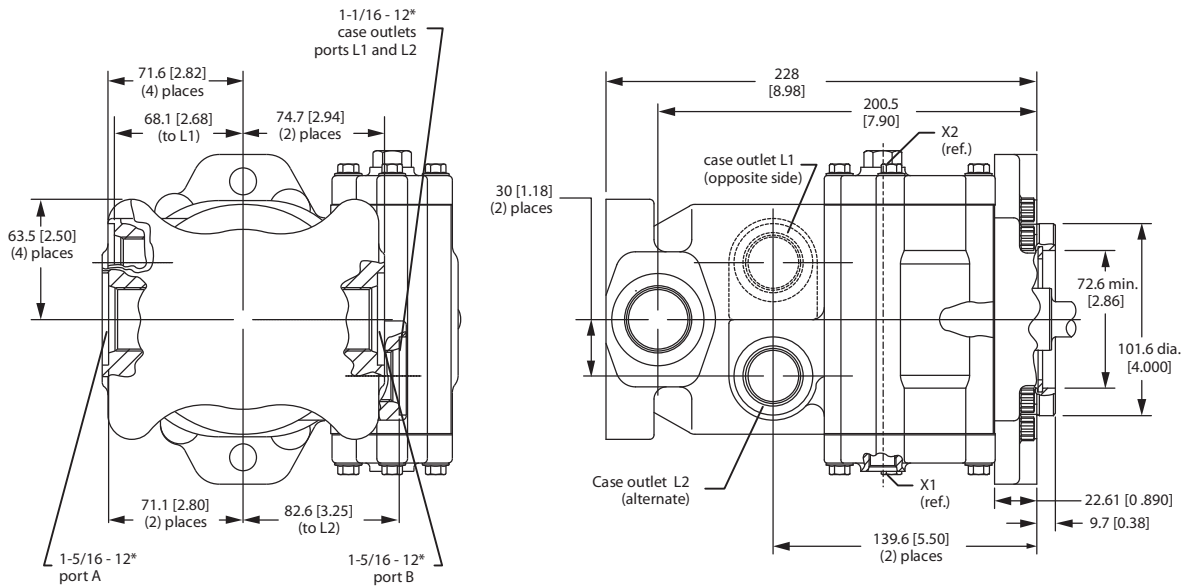
*All ports are SAE straight thread o-ring ports per SAE J514, unless otherwise specified.
 Shaft rotation is determined by viewing pump from input shaft end.
 Contact SAUER-DANFOSS Application Engineering for specific installation drawings.

**M46 MV: SIDE PORTS,
 LOOP FLUSHING**

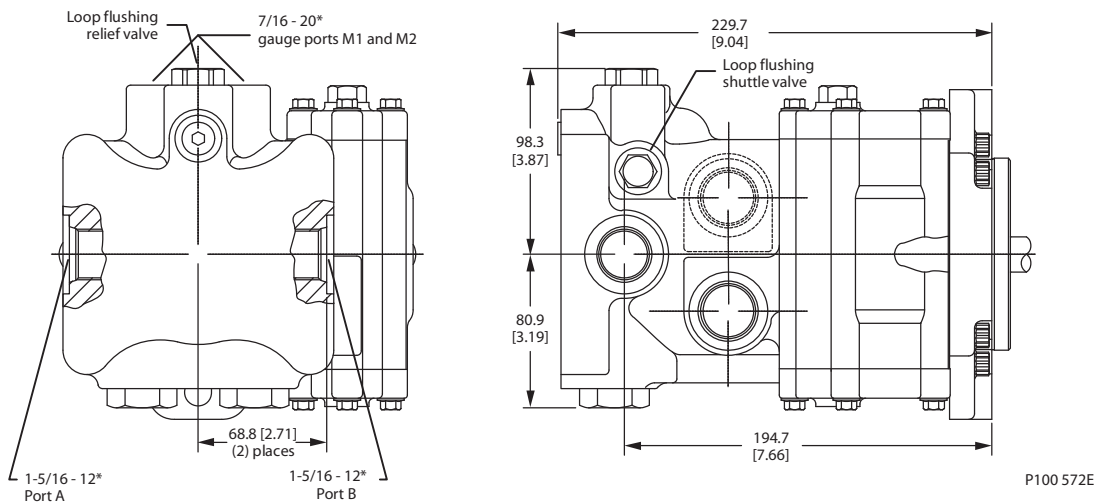
Flow direction

Motor shaft direction	Port A	Port B
Clockwise (CW)	Out	In
Counterclockwise (CCW)	In	Out

Radial (side) ports w/o loop flushing



Radial (side) ports w/ loop flushing

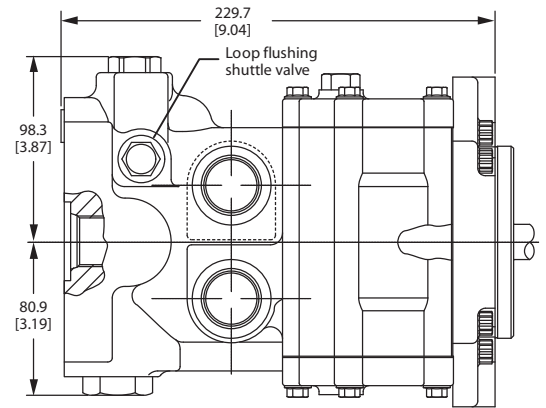
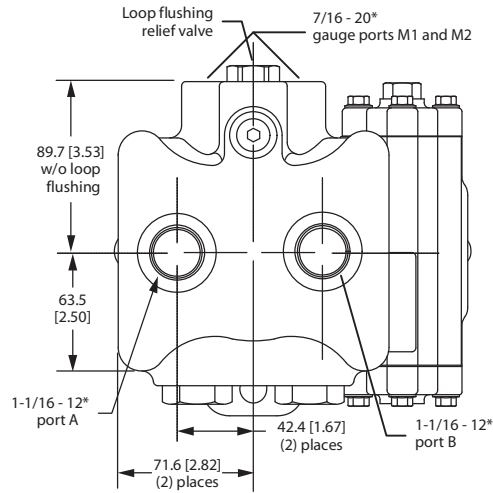


*All ports are SAE straight thread o-ring ports per SAE J514, unless otherwise specified.
 Shaft rotation is determined by viewing pump from input shaft end.
 Contact SAUER-DANFOSS Application Engineering for specific installation drawings.

Dimensions in mm [in]

**M46 MV: AXIAL PORTS,
 LOOP FLUSHING**

Axial ports w/ loop flushing



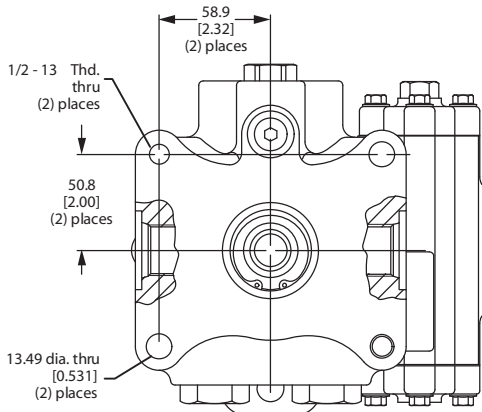
P100 573E

*All ports are SAE straight thread o-ring ports per SAE J514, unless otherwise specified.
 Shaft rotation is determined by viewing pump from input shaft end.
 Contact SAUER-DANFOSS Application Engineering for specific installation drawings.

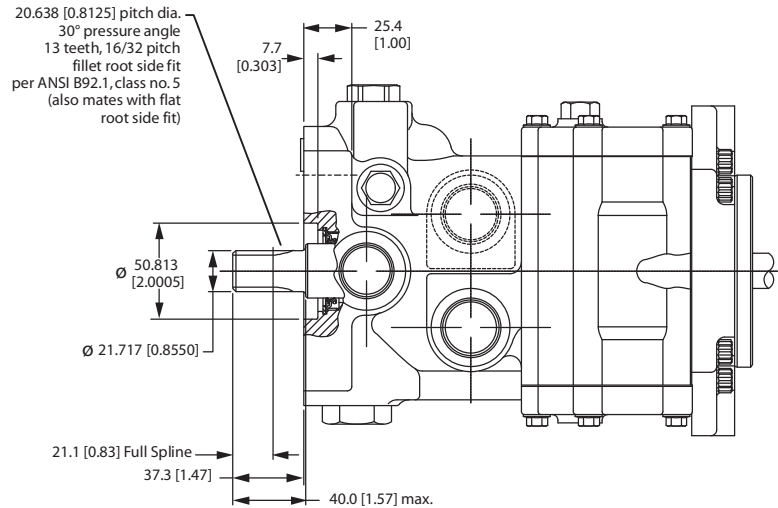
Dimensions in mm [in]

**M46 MV: SIDE PORTS,
 THRU SHAFT TWIN
 PORTS, LOOP FLUSHING**

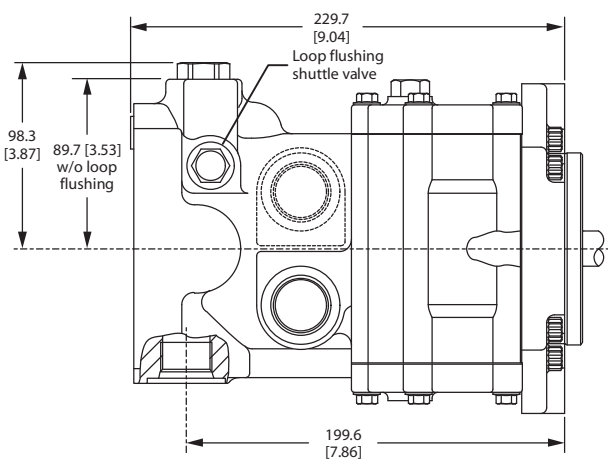
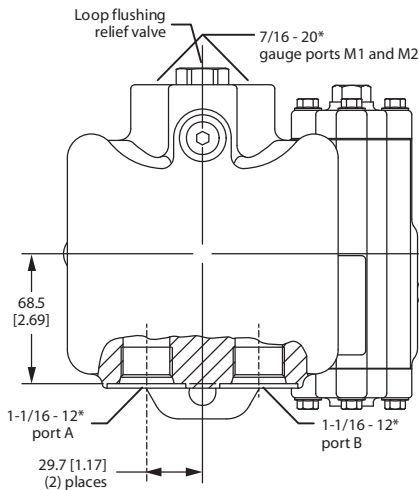
Side ports w/ thru shaft



*Radial (side) ported w/ loop flushing
 w/ thru shaft*



Radial (twin) ports w/ loop flushing

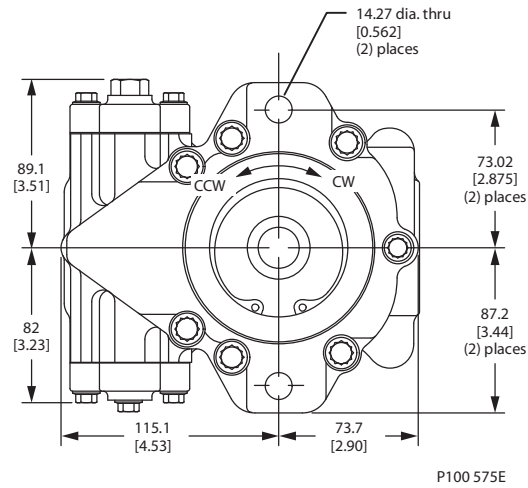


P100 574E

*All ports are SAE straight thread o-ring ports per SAE J514, unless otherwise specified.
 Shaft rotation is determined by viewing pump from input shaft end.
 Contact SAUER-DANFOSS Application Engineering for specific installation drawings.

Dimensions in mm [in]

**M46 MV: MOUNTING
FLANGE**

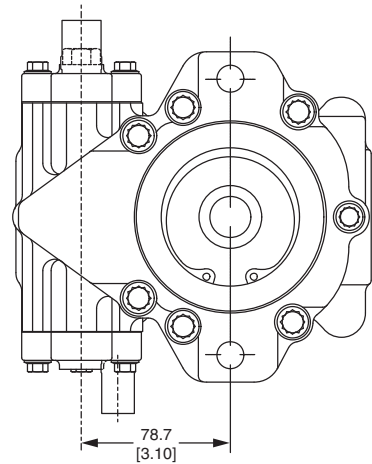
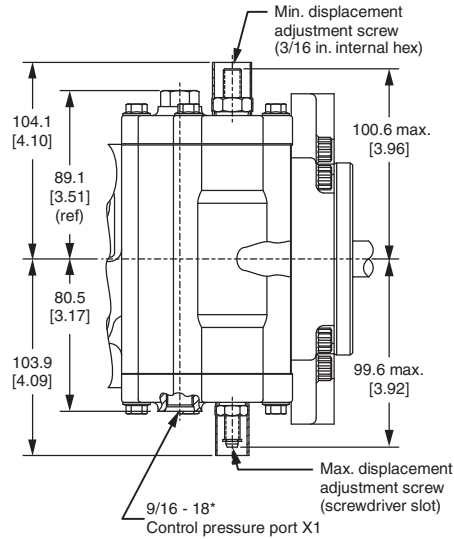


*All ports are SAE straight thread o-ring ports per SAE J514, unless otherwise specified.
Shaft rotation is determined by viewing pump from input shaft end.
Contact SAUER-DANFOSS Application Engineering for specific installation drawings.

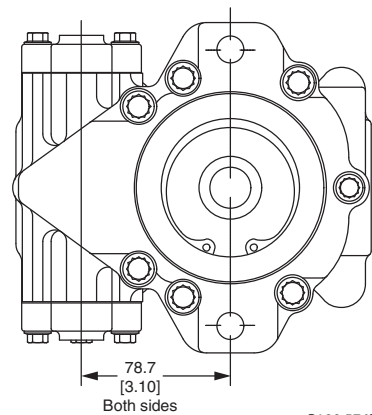
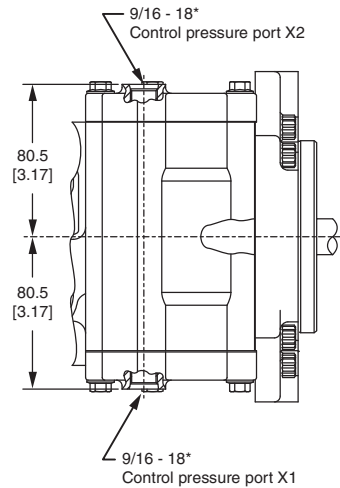
Dimensions in mm [in]

**M46 MV: CONTROL
PORTS**

Control w/ bottom pressure supply port and externally adjustable displacement limiters



Control w/ top and bottom pressure supply ports



P100 576E

*All ports are SAE straight thread o-ring ports per SAE J514, unless otherwise specified.
Shaft rotation is determined by viewing pump from input shaft end.
Contact SAUER-DANFOSS Application Engineering for specific installation drawings.

Dimensions in mm [in]