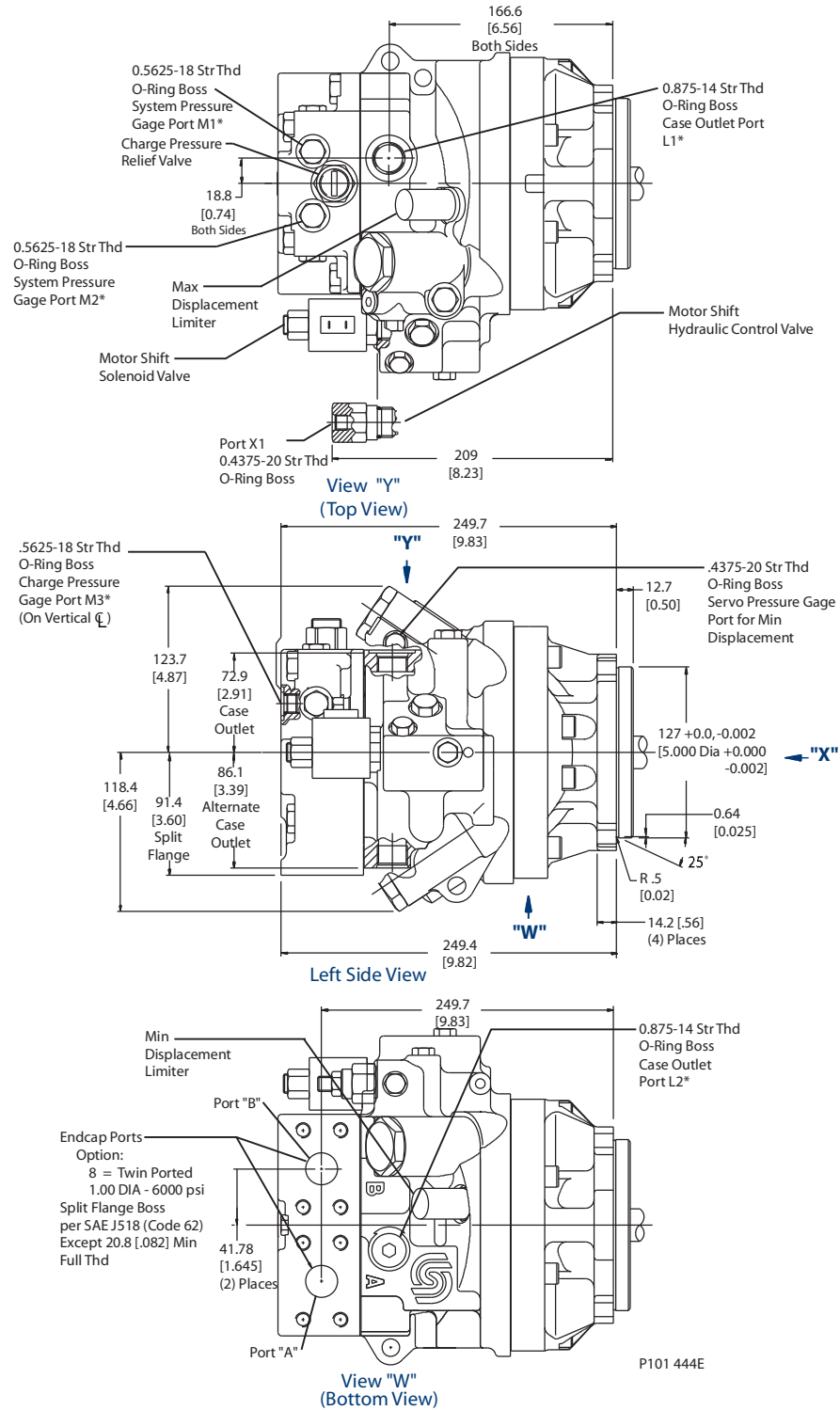


**90V55 VARIABLE MOTOR  
 SAE MOUNT**



All SAE straight thread O-rings ports per SAE J1926 (fittings per SAE 514). Shaft rotation is determined by viewing motor from output shaft end. Contact your Sauer-Danfoss representative for specific installation drawings

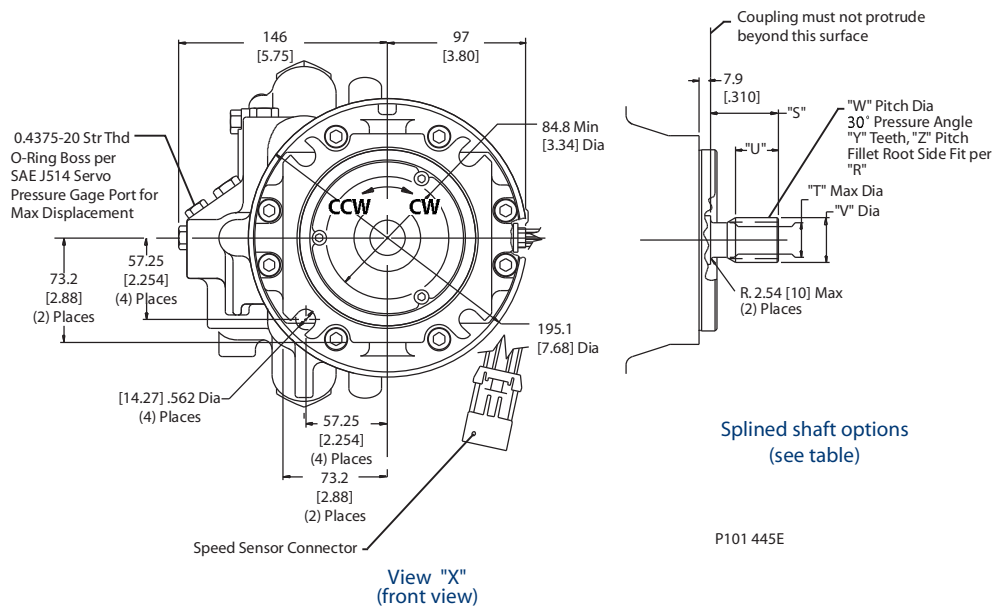
**90V55 VARIABLE MOTOR  
 SAE MOUNT  
 (continued)**

*Splined output shaft option*

Output shaft option	Shaft diameter T	Full spline length U	Major diameter V	Pitch diameter W	Number of teeth Y	Pitch Z
S1	24.9 [0.98]	27.9 [1.10]	31.13 [1.2258]	29.634 [1.1667]	14	12/24

*Flow direction*

Shaft rotation	Flow direction	
	Port A	Port B
Clockwise (CW)	in	out
Counterclockwise (CCW)	out	in



Splined shaft options  
 (see table)

P101 445E

mm  
 [in]

All SAE straight thread O-rings ports per SAE J1926 (fittings per SAE 514). Shaft rotation is determined by viewing motor from output shaft end. Contact your Sauer-Danfoss representative for specific installation drawings